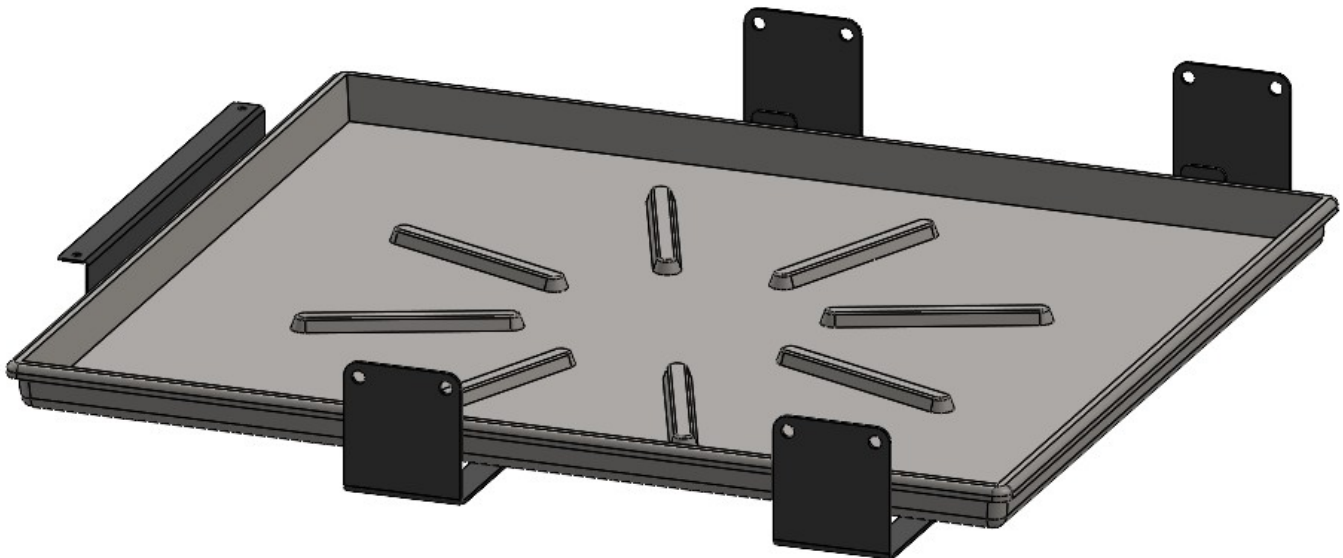


Running Engine Stand



Drip Pan Assembly Instruction Manual

Important Notes for Assembly:

- This manual is for the Drip Pan add-on of the Running Engine Stand assembly. If you have not yet started with the Main Assembly instructions, start there before returning here.
- Use care when handling parts. There may be sharp edges and holes on components. Using thick protective gloves is recommended during the assembly process.
- Each bolt and nut should have the appropriately sized washer placed between the fastener and the frame.
- The drip pan for this kit is not included due to shipping constraints, but can easily be sourced as a washing machine drain pan at many local hardware stores. The specific drain pan recommended in this kit is Lowes Item #2525624, "CAMCO Plastic Washing Machine Drain Pan (Gray)" The outside dimensions of this drain pan are 30.5" x 34.5", but similarly sized drain pans may also work.

Required Tools:

- Ratchet
- 5/8" Wrench
- 7/16" Wrench
- 5/8" Socket
- 7/16" Socket

**If you are experiencing problems upon installation—
DO NOT RETURN THIS PRODUCT!**

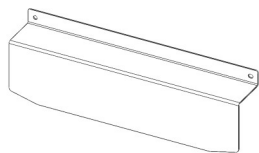
Most installation problems can be easily solved.

First contact technical support at:

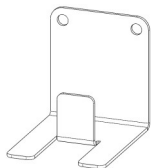
Service@mechman.com

1 (888) MECHMAN or 865-522-6166

Included Components:

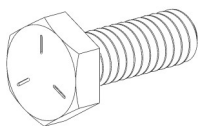


Front Drip Pan Bracket 1x

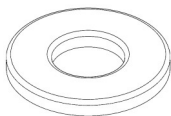


Side Drip Pan Bracket 4x

Included Hardware



1/4"-20 x 0.75" Hex Bolt 2x



1/4" Flat Washer 4x



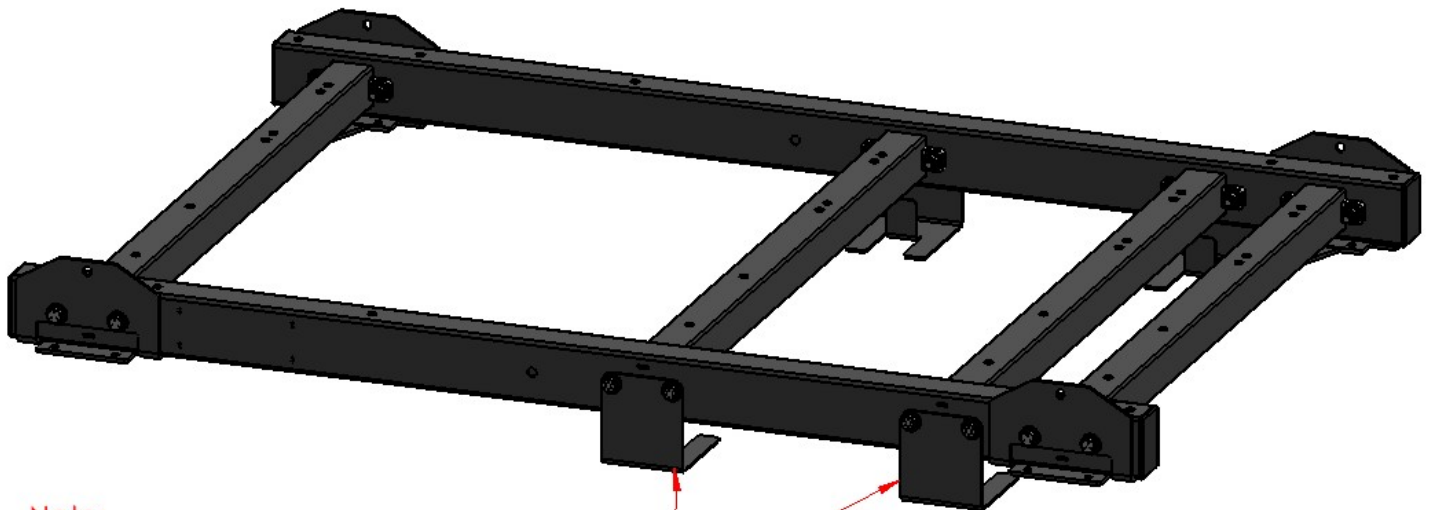
1/4"-20 Nylock Nut 2x

Assembly Instructions:

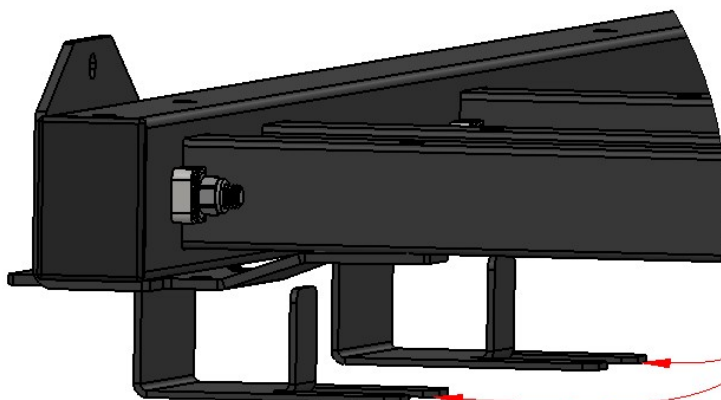
Step 1: Attaching the Side Drip Pan Brackets to the Assembly

Required Components:

- 4x Side Drip Pan Brackets
- **Note: This step uses hardware from Step 1 and 2 of the Main Assembly instructions and should be completed simultaneously. If these steps are already complete, remove the necessary hardware and reinstall with the added bracket in place.**
- Use the fasteners for the crossmembers from Steps 1 & 2 of the Main Assembly instructions to attach the Side Drip Pan Brackets to the Assembly.



Note:
Install 4x Side Drip Pan Brackets during
Step 1 & 2 of Main Assembly instructions



Note:
Flanges of the Side Drip Pan
Brackets should point towards
the center of the assembly

Assembly Instructions:

Step 2: Attaching the Front Drip Pan Bracket to the Fuel & Battery Tray

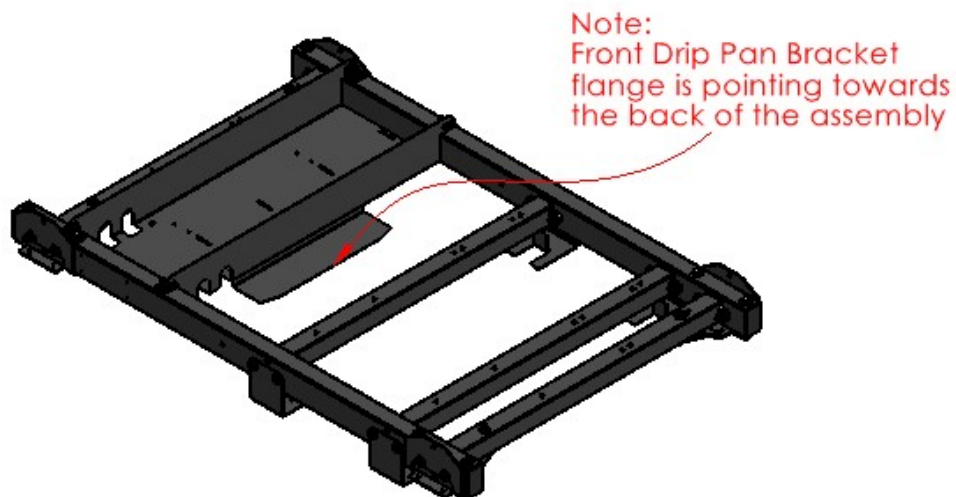
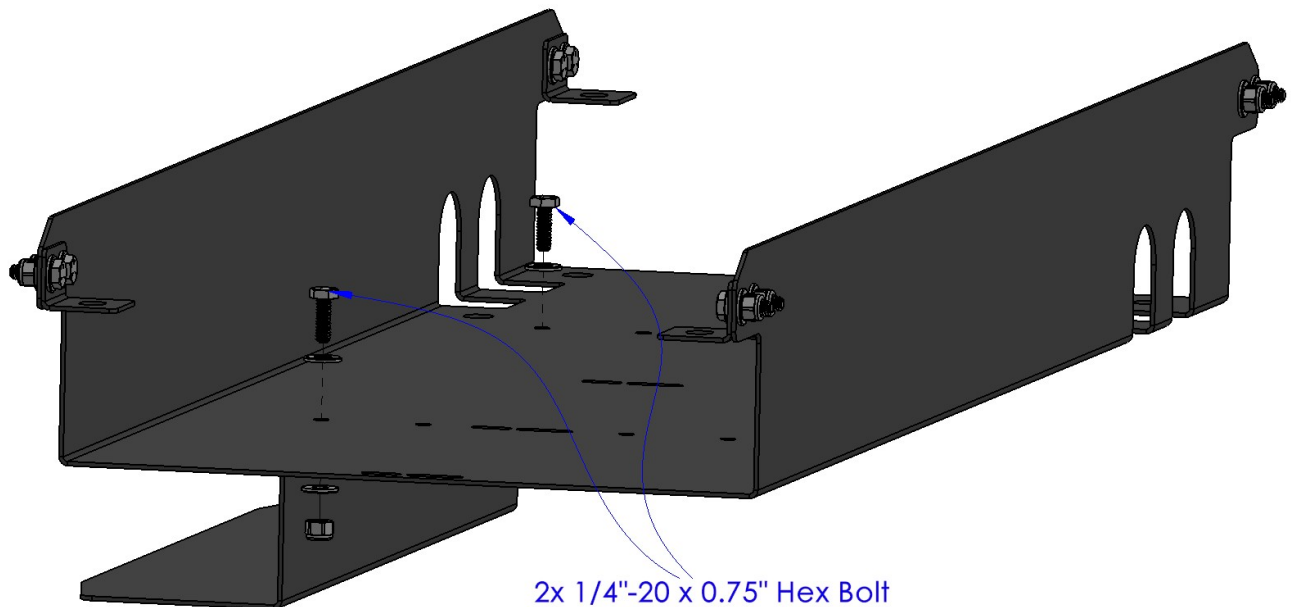
Required Components:

- 1x Front Drip Pan Bracket

Required Hardware:

- 2x 1/4"-20 x 0.75" Hex Bolt
- 4x 1/4" Flat Washer
- 2x 1/4"-20 Nylock Nut

- After installing the Fuel and Battery Tray, attach the Front Drip Pan Bracket using the 1/4"-20 x 0.75" Hex Bolts.



Assembly Instructions:

Step 3: Sliding the Drip Pan into the Assembly

Required Components:

- 1x Drip Pan (Not Included)
- Slide the Drip Pan onto the Side Drip Pan Brackets until it hits the back of the Front Drip Pan Bracket.
- Note: See “Important Notes for Assembly” at the beginning of the instructions for more information on acquiring a drain pan.

