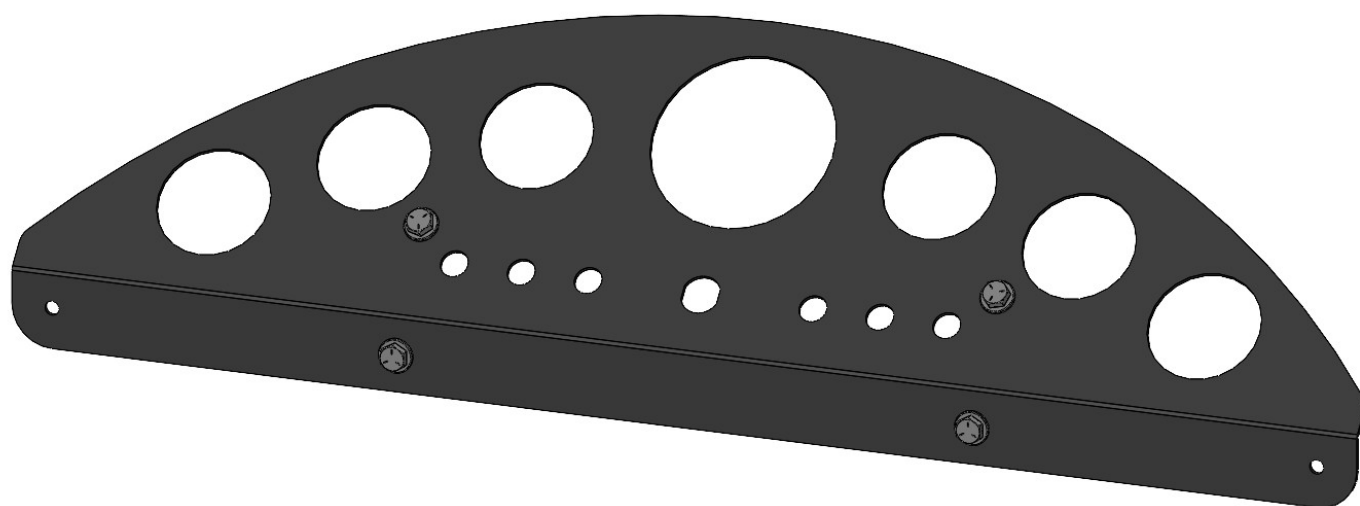


Running Engine Stand



Electrical/Gauge Panel Assembly Instruction Manual

Important Notes for Assembly:

- This manual is for the Electrical/Gauge Panel add-on of the Running Engine Stand assembly. If you have not yet started with the Main Assembly instructions, start there before returning here.
- Use care when handling parts. There may be sharp edges and holes on components. Using thick protective gloves is recommended during the assembly process.
- Each bolt and nut should have the appropriately sized washer placed between the fastener and the frame.

Required Tools:

- Ratchet
- 7/16" Wrench
- 7/16" Socket
- Wire Strippers

**If you are experiencing problems upon installation—
DO NOT RETURN THIS PRODUCT!**

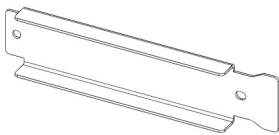
Most installation problems can be easily solved.

First contact technical support at:

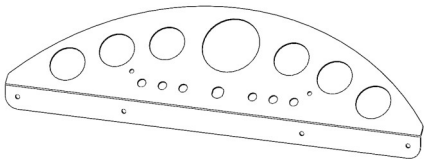
Service@mechman.com

1 (888) MECHMAN or 865-522-6166

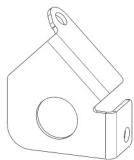
Included Components:



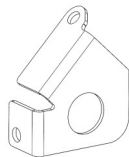
Battery Hold-Down Bracket 1x



Gauge Panel 1x



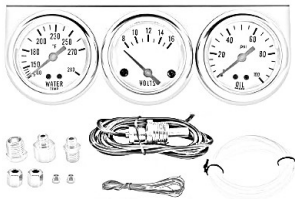
Dash Gusset, Right 1x



Dash Gusset, Left 1x



Tachometer 1x



Triple Gauge Kit 1x

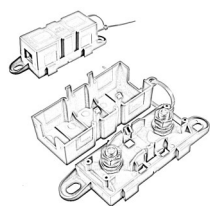


Ignition Switch w/ Key 1x



Relay Box 1x

Included Components:

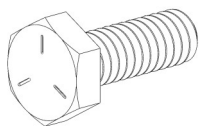


300 Amp Fuse Holder	1x
---------------------	----

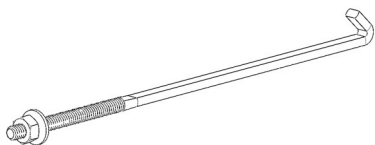


300 Amp Fuse	1x
--------------	----

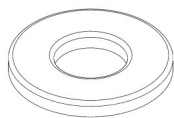
Included Hardware:



1/4"-20 x 0.75" Hex Bolt	4x
--------------------------	----



1/4"-20 x 9" Hold Down Bolt	2x
-----------------------------	----



1/4" Flat Washer	8x
------------------	----



1/4"-20 Nylock Nut	4x
--------------------	----

Assembly Instructions:

Step 1: Attaching the Gauge Panel to the Assembly

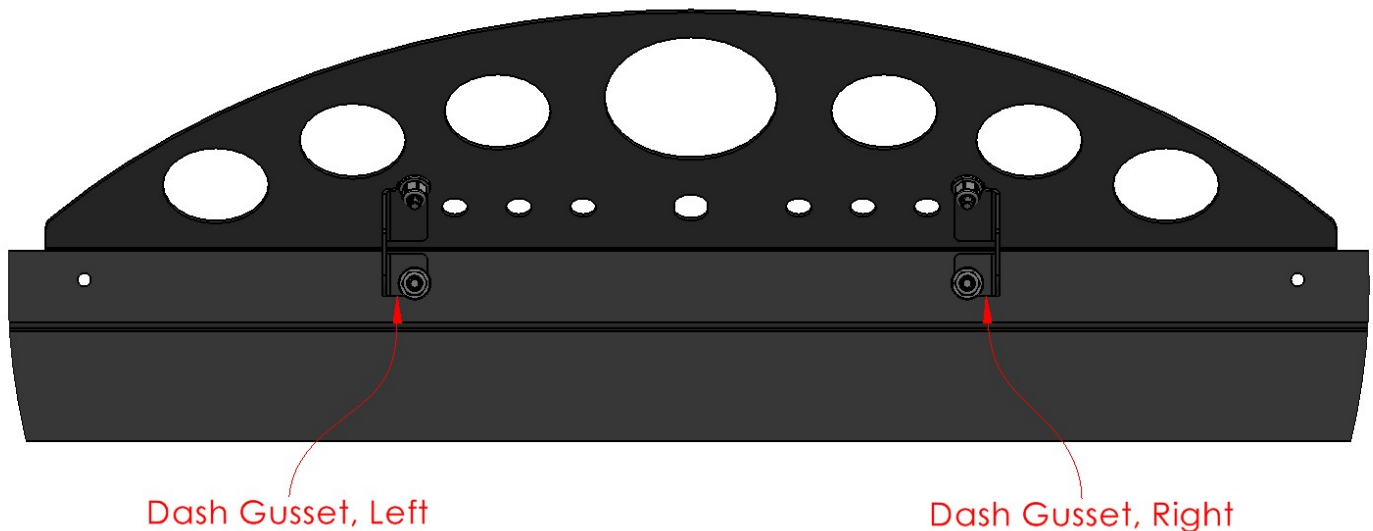
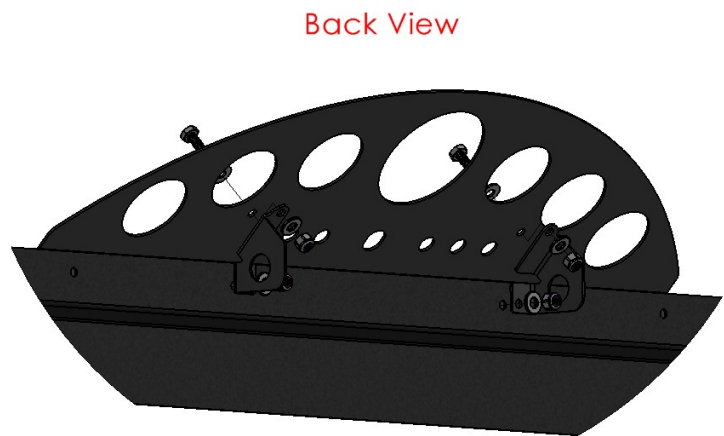
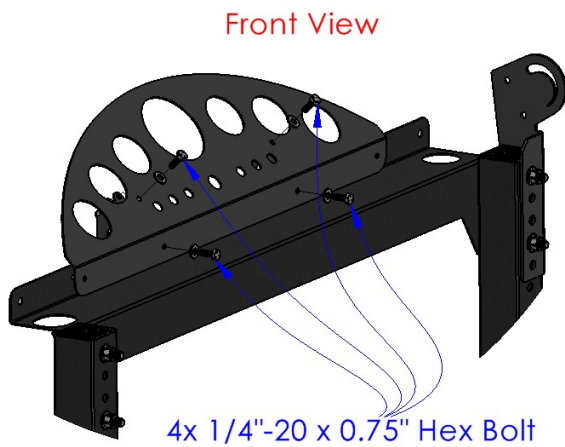
Required Components:

- 1x Gauge Panel
- 1x Dash Gusset, Right
- 1x Dash Gusset, Left

Required Hardware:

- 4x 1/4"-20 x 0.75" Hex Bolt
- 8x 1/4" Flat Washer
- 4x 1/4"-20 Nylock Nut

- Use the 1/4"-20 x 0.75" Hex Bolts to attach the Gauge Panel and the Dash Gussets to the upper Radiator Support Crossmember.



Assembly Instructions:

Step 2: Insert the Battery into to the Assembly

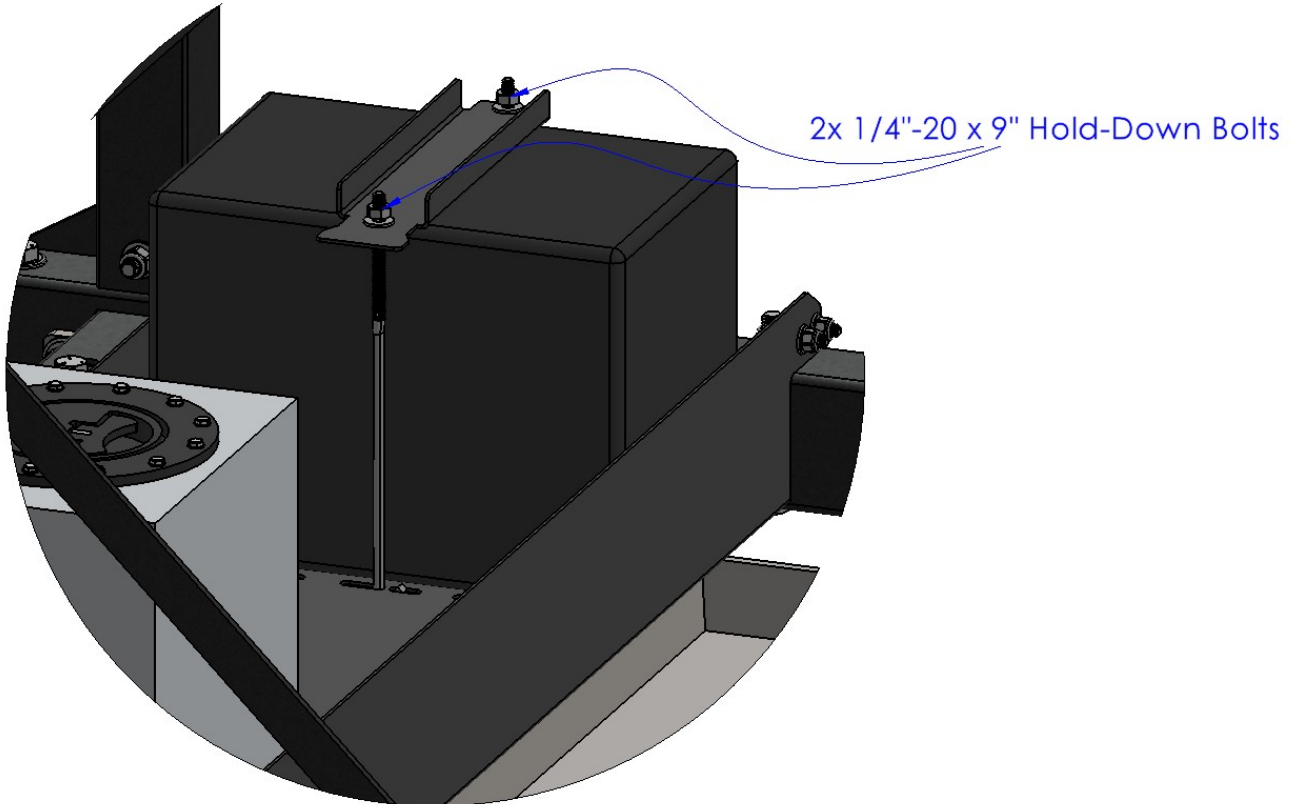
Required Components:

- 1x Battery Hold-Down Bracket
- 1x Group 34 Battery (**not included**)

Required Hardware:

- 2x 1/4"-20 x 9" Hold Down Bolt

- Use the 1/4"-20 x 9" Hold Down Bolts to clamp the Group 34 Battery to the Fuel & Battery Tray.
- **Note: There is room for up to two additional batteries in the Fuel & Battery Tray.**



Electrical Schematic:

