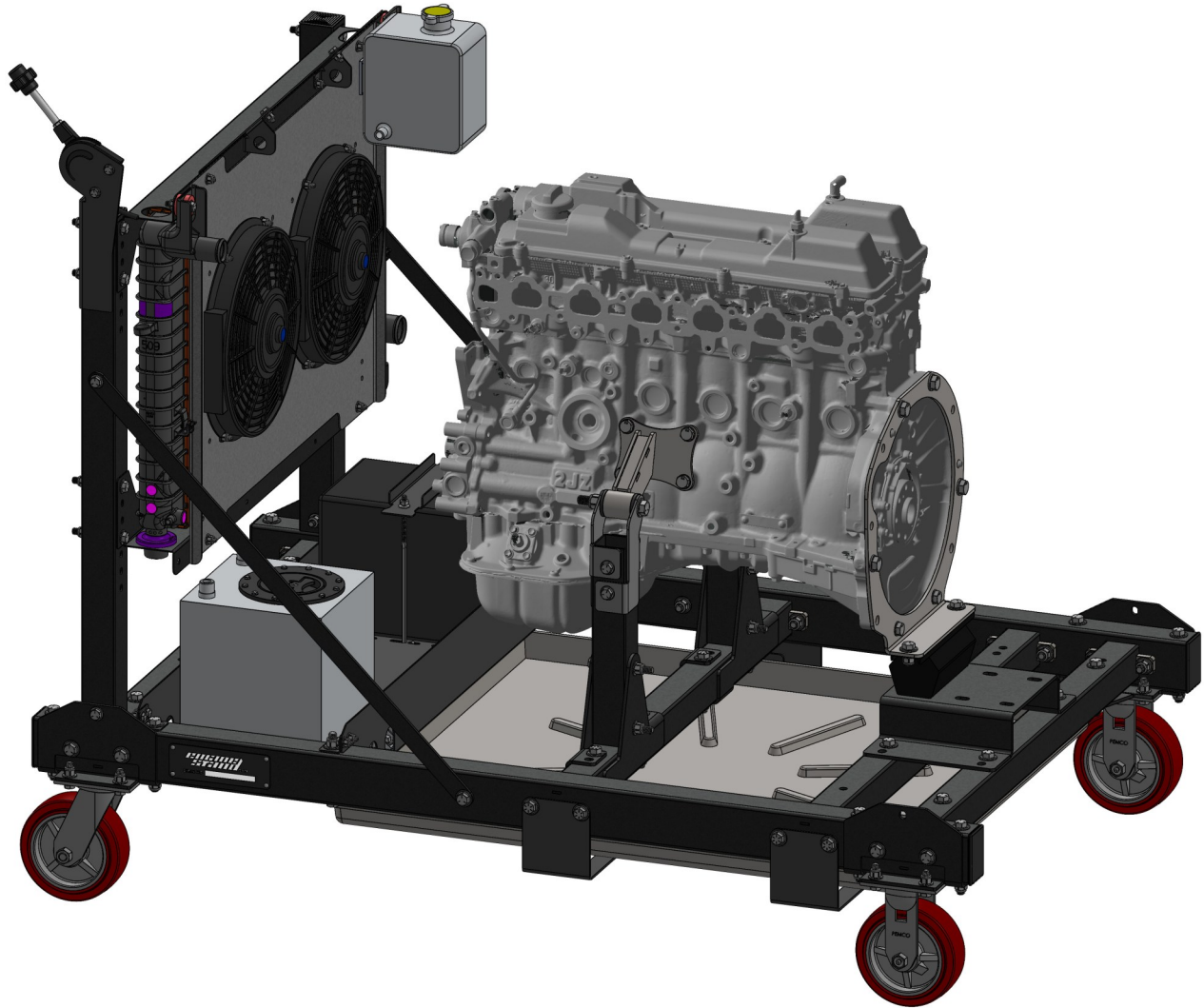


Running Engine Stand



2JZ Engine Assembly Instruction Manual

Important Notes for Assembly:

- This manual is for the 2JZ motor mount kit for the Running Engine Stand assembly. If you have not yet started with the Main Assembly or ATW instructions, start there before returning here.
- Use care when handling parts. There may be sharp edges and holes on components. Using thick protective gloves is recommended during the assembly process.
- Each bolt and nut should have the appropriately sized washer placed between the fastener and the frame.

Required Tools:

- Ratchet
- 19mm Socket
- 3/4" Wrench
- 17mm Socket
- 3/4" Socket
- 5/8" Wrench
- 5/8" Socket
- 9/16" Wrench
- 9/16" Socket

**If you are experiencing problems upon installation—
DO NOT RETURN THIS PRODUCT!**

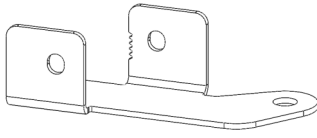
Most installation problems can be easily solved.

First contact technical support at:

Service@mechman.com

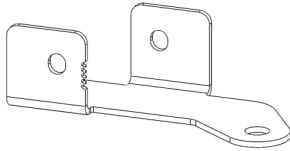
1 (888) MECHMAN or 865-522-6166

Included Components:



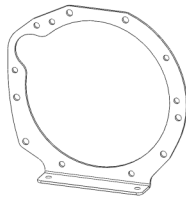
2JZ Motor Mount Part A

2x



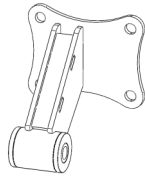
2JZ Motor Mount Part B

2x



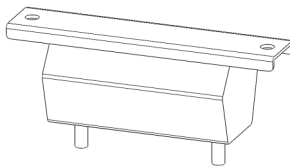
2JZ Bell Adapter Plate

1x



2JZ Motor Mount

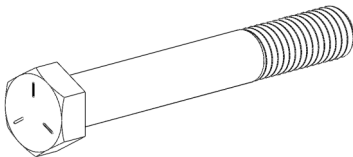
2x



2WD Transmission Mount

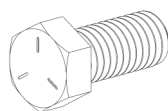
1x

Included Hardware



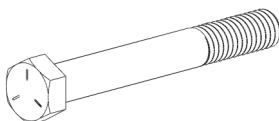
1/2"-13 x 3.75" Hex Bolt

2x



7/16"-14 x 1" Hex Bolt

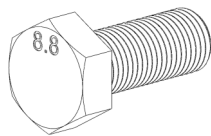
2x



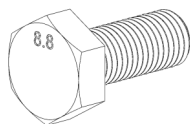
3/8"-16 x 3" Hex Bolt

4x

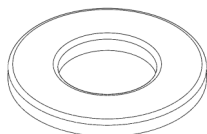
Included Hardware



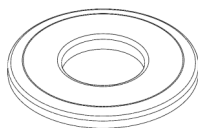
M12-1.25 x 30 Hex Bolt 4x



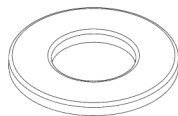
M10-1.25 x 25 Hex Bolt 10x



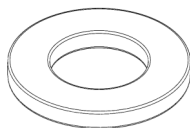
1/2" Flat Washer 4x



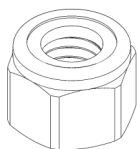
7/16" Flat Washer 4x



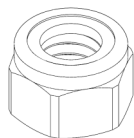
3/8" Flat Washer 18x



M12 Flat Washer 4x



1/2"-13 Nylock Nut 2x



7/16"-14 Nylock Nut 2x



3/8"-16 Nylock Nut 4x

Assembly Instructions:

Step 1: Attaching the 2JZ Motor Mount Brackets to the Front Engine Mount Tubes

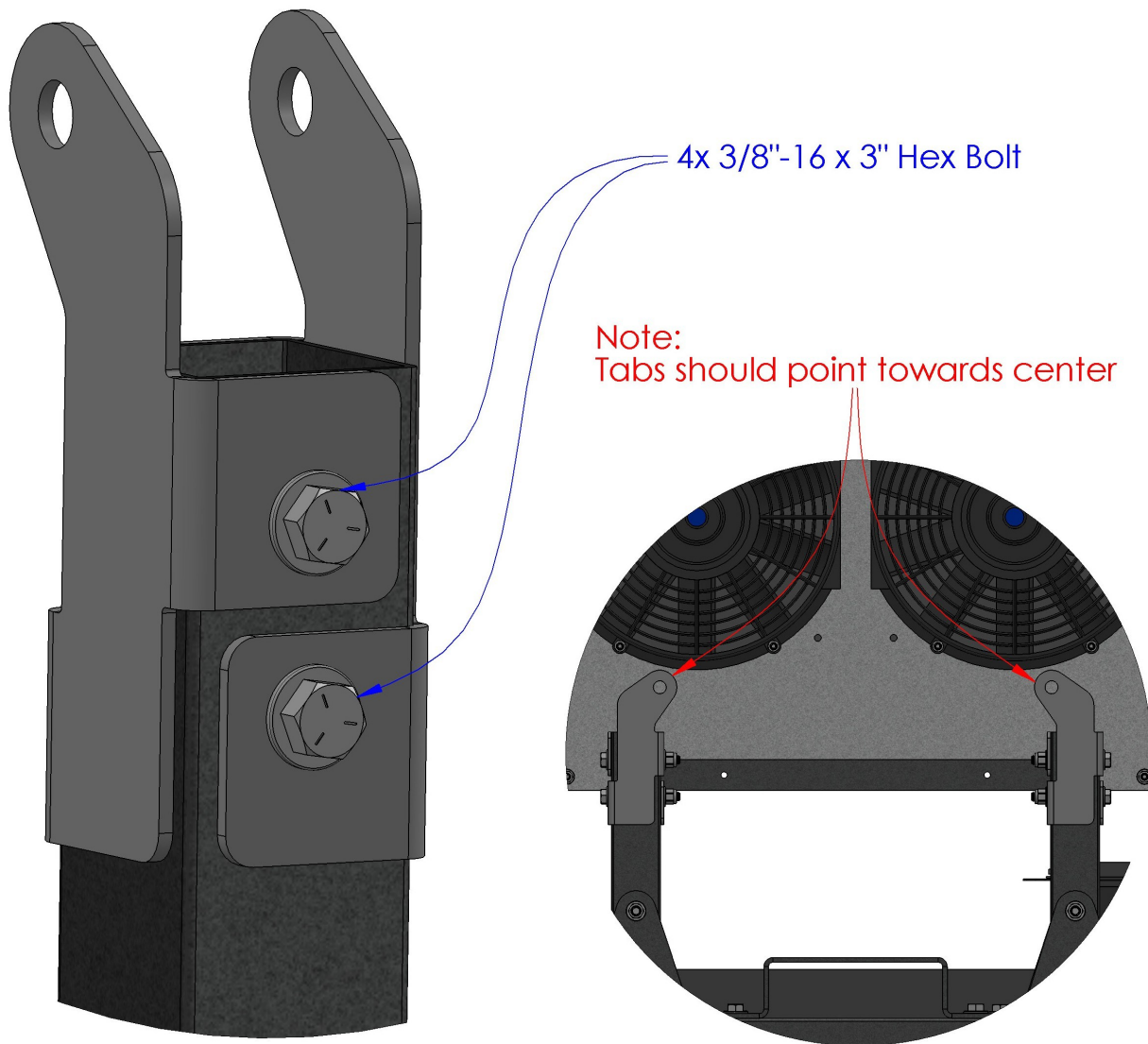
Required Components:

- 2x 2JZ Motor Mount Part A
- 2x 2JZ Motor Mount Part B

Required Hardware:

- 4x 3/8"-16 x 3" Hex Bolts
- 4x 3/8"-16 Nylock Nut
- 8x 3/8" Flat Washer

- Use the 3/8"-16 x 3" Hex Bolts to attach the 2JZ Motor Mount Brackets to the Front Engine Mount Tubes.

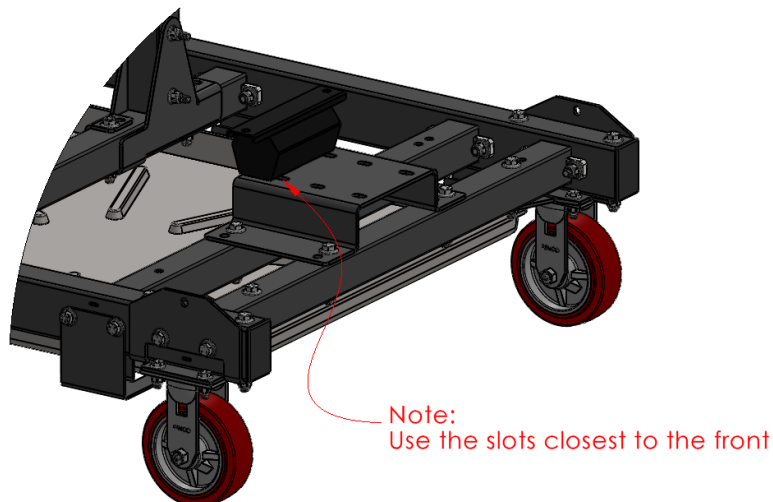
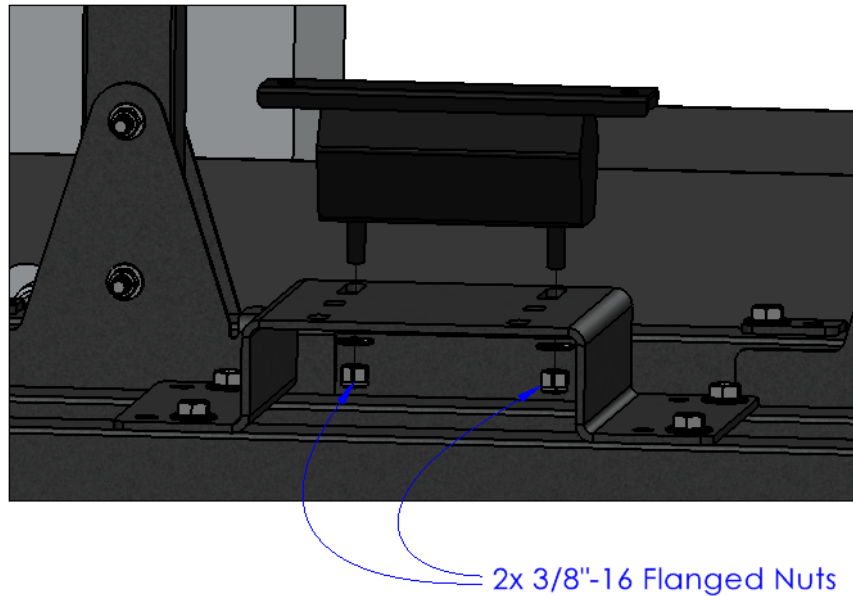


Assembly Instructions:

Step 2: Attaching the 2WD Transmission Mount to the Rear Engine Mount Bracket

Required Components: Required Hardware:

- 1x 2WD Transmission Mount
- 2x 3/8"-16 Flanged Nut (Included w/ Transmission Mount)
- Use the 3/8"-16 Flanged Nuts to attach the 2WD Transmission Mount to the Rear Engine Mount Bracket.
- Note: Place the 2WD Transmission Mount in the front set of slots.



Assembly Instructions:

Step 3: Attaching the 2JZ Motor Mounts to the 2JZ Engine

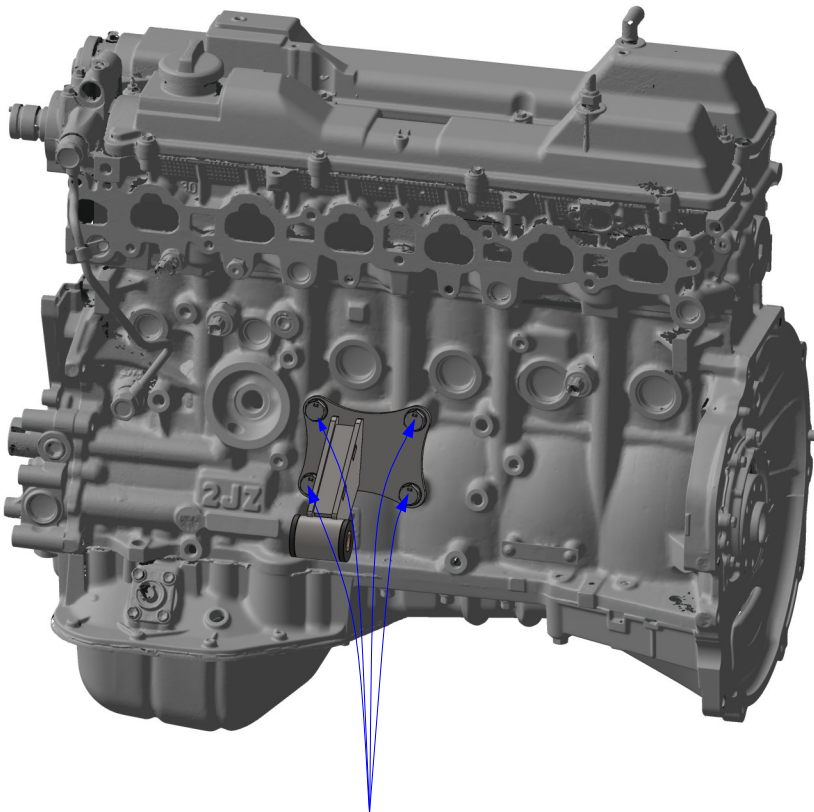
Required Components:

- 1x 2JZ Engine
(Not Included)
- 2x 2JZ Motor Mounts

Required Hardware:

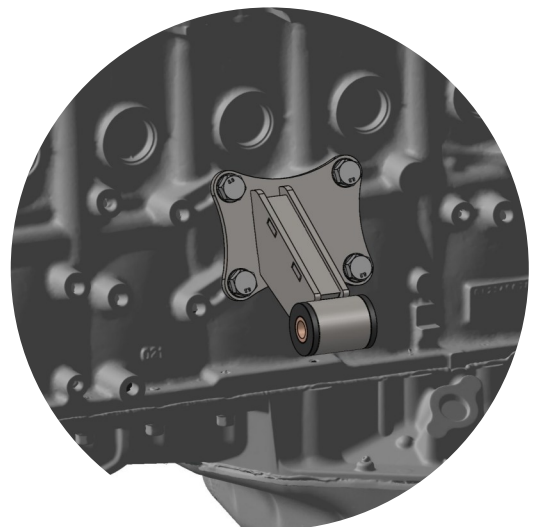
- 8x M10-1.25 x 25 Hex Bolts
- 8x 3/8" Flat Washer

- Use the M10-1.25 x 25 Hex Bolts to attach the 2JZ Motor Mounts to the 2JZ Engine Block.



8x M10-1.25 x 25 Hex Bolt

Other side of engine:



Assembly Instructions:

Step 4: Attaching the 2JZ Bell Adapter Plate to the 2JZ Engine Assembly

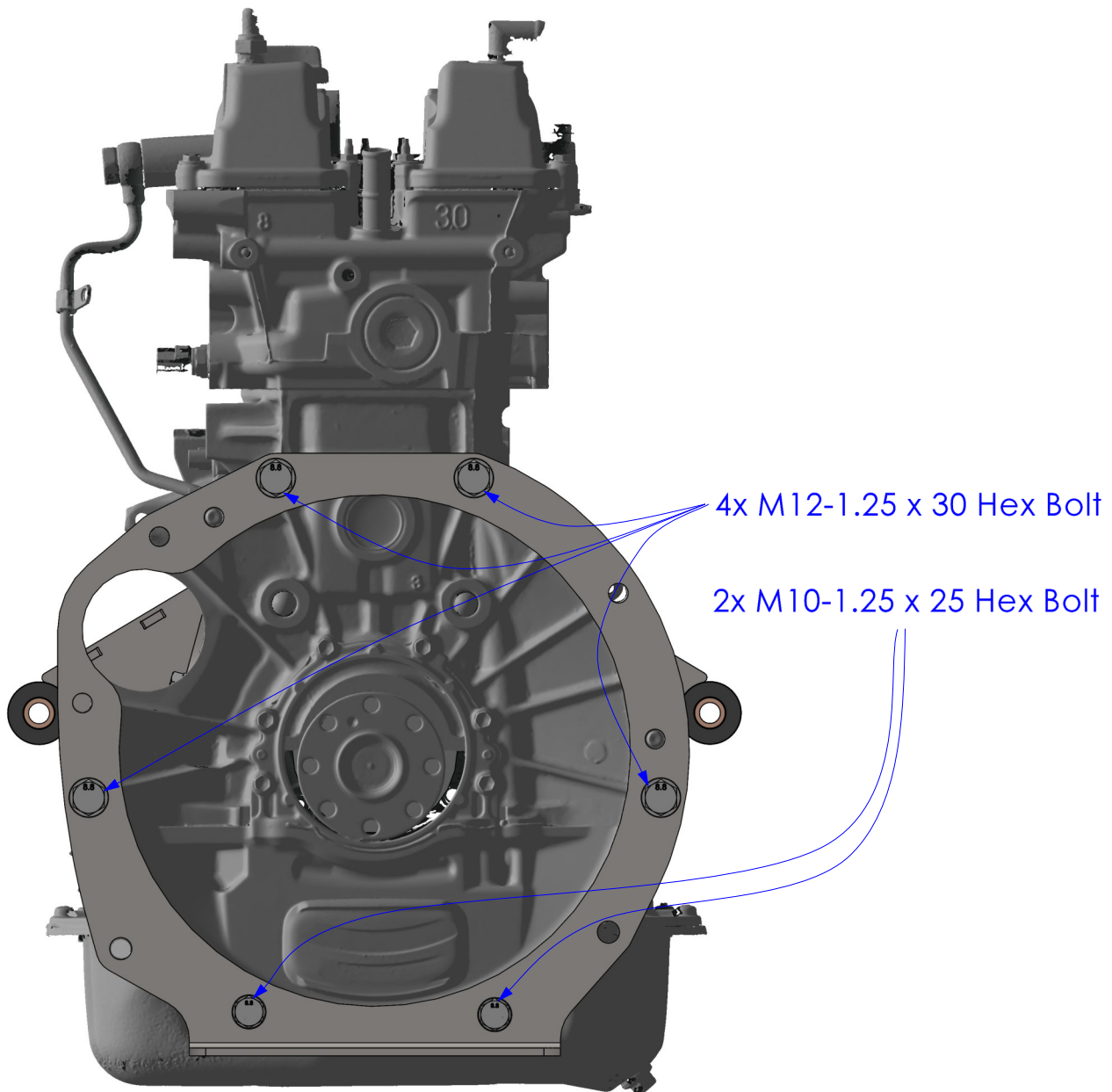
Required Components:

- 1x 2JZ Bell Adapter Plate

Required Hardware:

- 4x M12-1.25 x 30 Hex Bolts
- 4x M12 Flat Washer
- 2x M10-1.25 x 25 Hex Bolts
- 2x 3/8" Flat Washer

- Use the M12-1.25 x 30 Hex Bolts and the M10-1.25 x 25 Hex Bolts to attach the 2JZ Bell Adapter Plate to the 2JZ Engine.



Assembly Instructions:

Step 5: Attaching the 2JZ Engine Assembly to the Running Engine Stand

Required Components:

- 1x 2JZ Engine Assembly

Required Hardware:

- 2x 1/2"-13 x 3.75" Hex Bolts
- 2x 7/16"-14 x 1" Hex Bolts
- 4x 1/2" Flat Washer
- 4x 7/16" Flat Washer
- 2x 1/2"-13 Nylock Nut
- 2x 7/16"-14 Nylock Nut

- Lower the 2JZ engine into place on the Running Engine Stand. Use the 1/2"-13 x 3.75" Hex Bolts to attach the 2JZ Motor Mounts to the 2JZ Motor Mount Brackets. Then, use the 7/16"-14 x 1" Hex Bolts to attach the 2JZ Bell Adapter Plate to the 2WD Transmission Mount.

