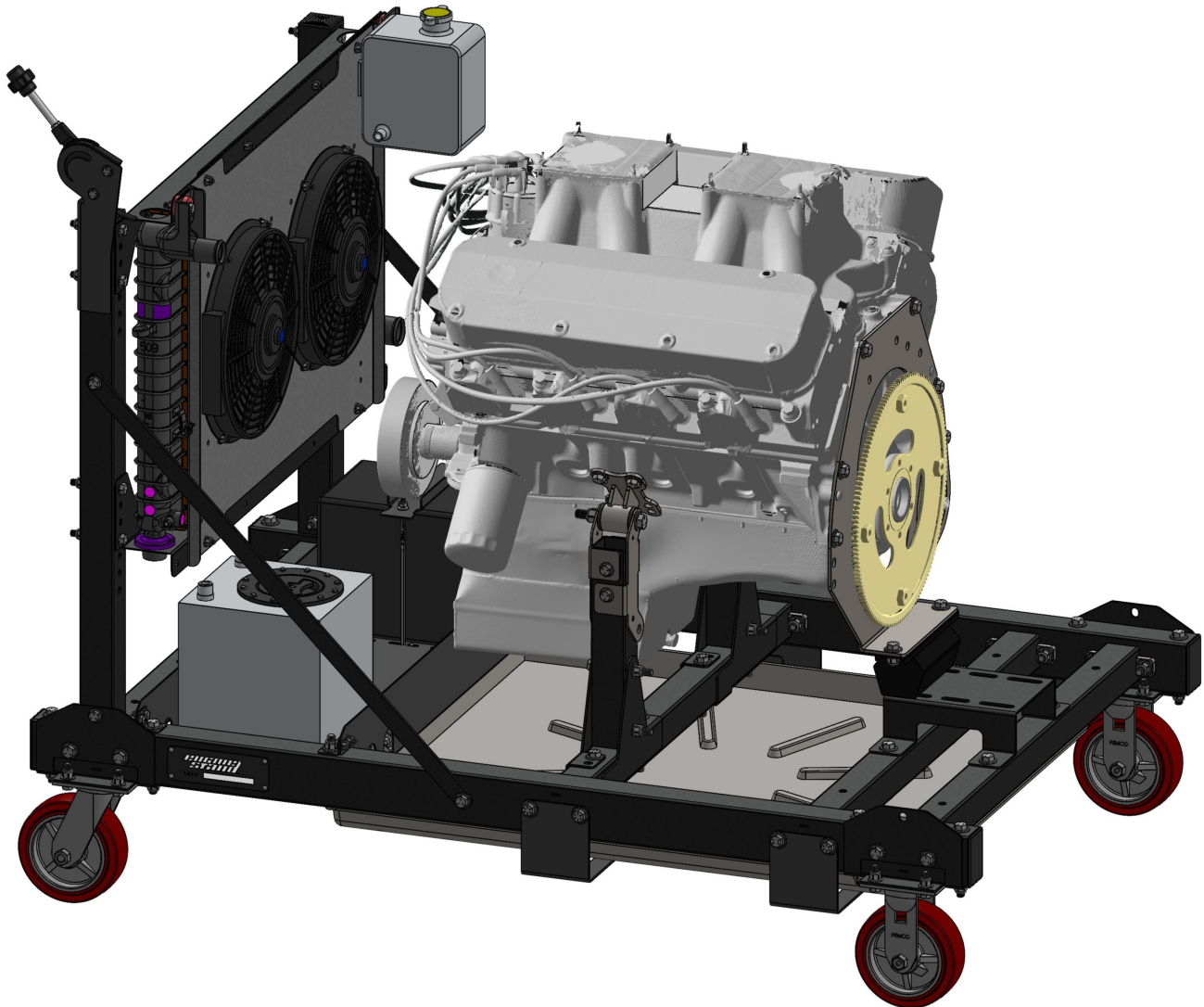


Running Engine Stand



Big Block Ford Engine Assembly Instruction Manual

Important Notes for Assembly:

- This motor mount kit fits the Ford 385 and FE engine families
- This manual is for the big block Ford motor mount kit for the Running Engine Stand assembly. If you have not yet started with the Main Assembly or ATW instructions, start there before returning here.
- Use care when handling parts. There may be sharp edges and holes on components. Using thick protective gloves is recommended during the assembly process.
- Each bolt and nut should have the appropriately sized washer placed between the fastener and the frame.

Required Tools:

- Ratchet
- 3/4" Wrench
- 3/4" Socket
- 5/8" Wrench
- 5/8" Socket
- 9/16" Wrench
- 9/16" Socket

**If you are experiencing problems upon installation—
DO NOT RETURN THIS PRODUCT!**

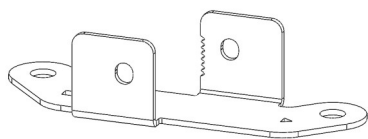
Most installation problems can be easily solved.

First contact technical support at:

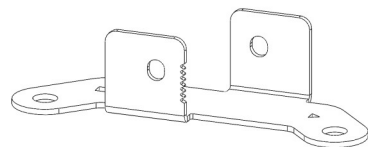
Service@mechman.com

1 (888) MECHMAN or 865-522-6166

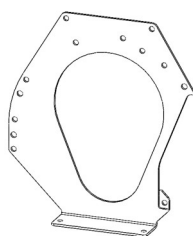
Included Components:



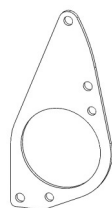
BBF Motor Mount Part A 2x



BBF Motor Mount Part B 2x



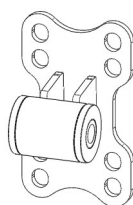
BBF Bell Adapter Plate 1x



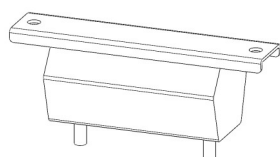
385 Starter Indexing Plate 1x



FE Starter Indexing Plate 1x

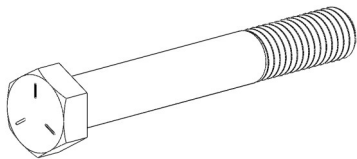


BBF Motor Mount 2x

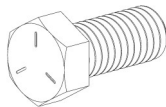


2WD Transmission Mount 1x

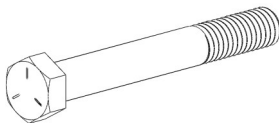
Included Hardware



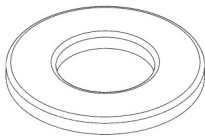
1/2"-13 x 3.75" Hex Bolt 2x



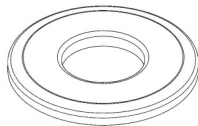
7/16"-14 x 1" Hex Bolt 17x



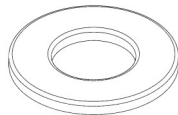
3/8"-16 x 3" Hex Bolt 4x



1/2" Flat Washer 4x



7/16" Flat Washer 20x



3/8" Flat Washer 8x



1/2"-13 Nylock Nut 2x



7/16"-14 Nylock Nut 3x



3/8"-16 Nylock Nut 4x

Assembly Instructions:

Step 1: Attaching the BBF Motor Mount Brackets to the Front Engine Mount Tubes

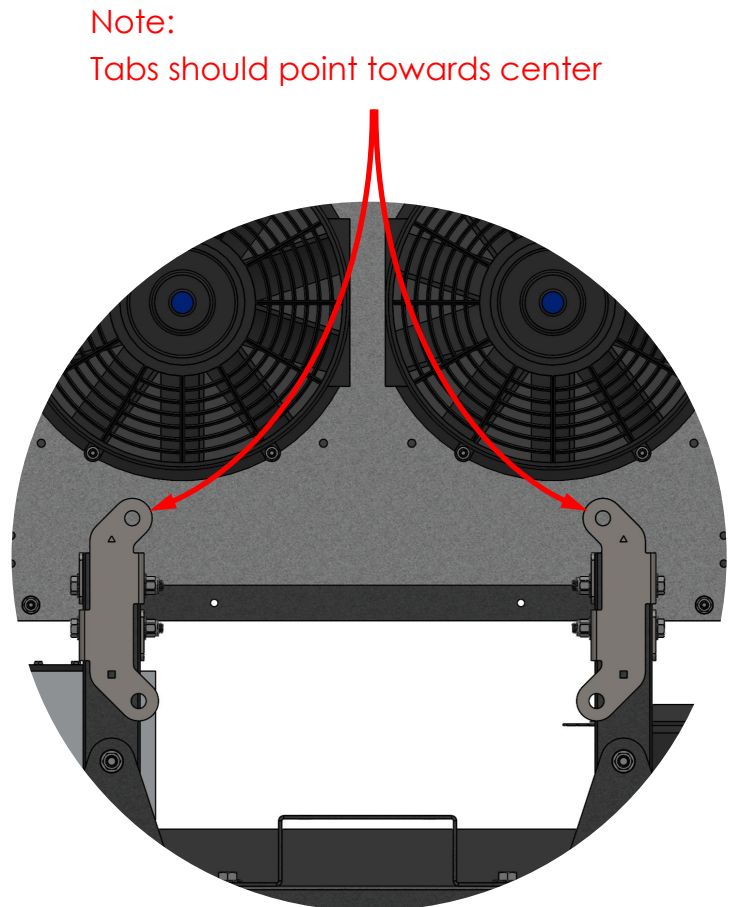
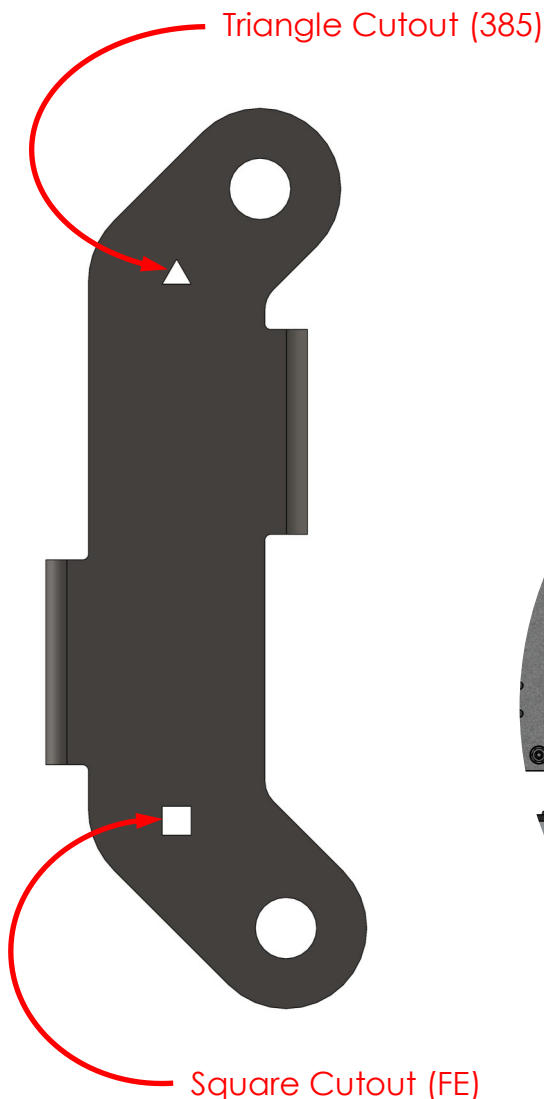
Required Components:

- 2x BBF Motor Mount Part A
- 2x BBF Motor Mount Part B

Required Hardware:

- 4x 3/8"-16 x 3" Hex Bolts
- 4x 3/8"-16 Nylock Nut
- 8x 3/8" Flat Washer

- Use the 3/8"-16 x 3" Hex Bolts to attach the BBF Motor Mount Brackets to the Front Engine Mount Tubes.
- **Note: Put the triangle cutouts on top if using a 385 family engine block. Put the square cutouts on top if using an FE family engine block.**

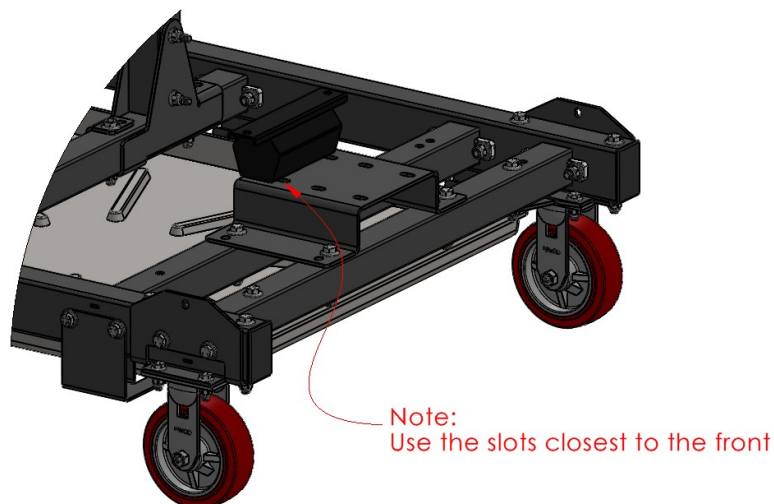
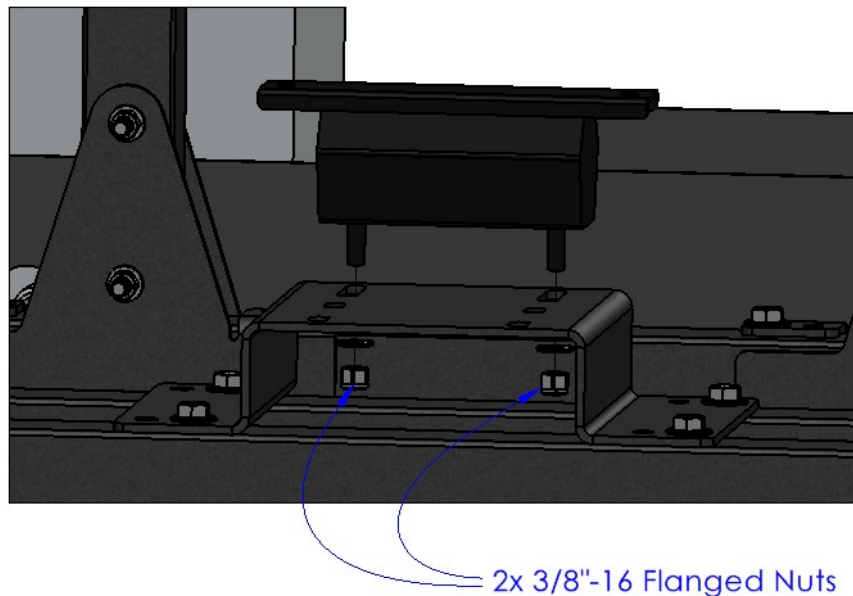


Assembly Instructions:

Step 2: Attaching the 2WD Transmission Mount to the Rear Engine Mount Bracket

Required Components: Required Hardware:

- 1x 2WD Transmission Mount
- 2x 3/8"-16 Flanged Nut (Included w/ Transmission Mount)
- Use the 3/8"-16 Flanged Nuts to attach the 2WD Transmission Mount to the Rear Engine Mount Bracket.
- Note: Place the 2WD Transmission Mount in the front set of slots.



Assembly Instructions:

Step 3: Attaching the BBF Motor Mounts to the BBF Engine

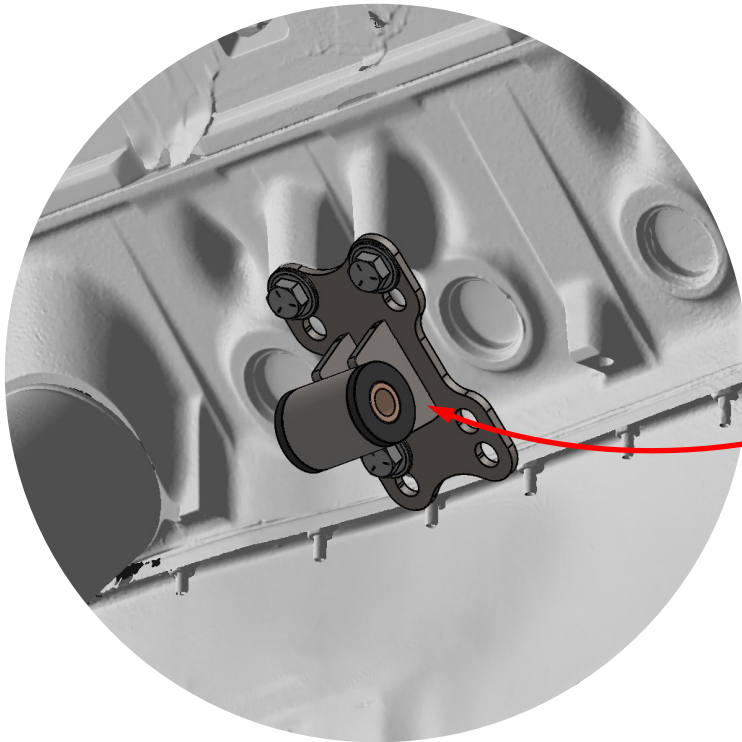
Required Components:

- 1x 385 or FE Engine
 - 2x BBF Motor Mounts
- (Not Included)

Required Hardware:

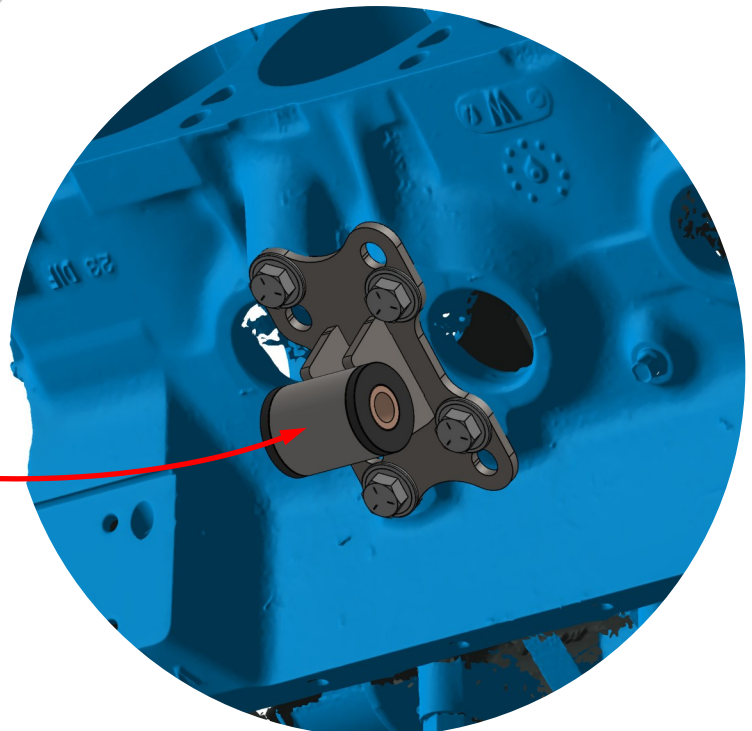
- 8x 7/16"-14 x 1" Hex Bolts
- 8x 7/16" Flat Washer

- Use the 7/16"-14 x 1" Hex Bolts to attach the BBF Motor Mounts to the BBF Engine Block.



385 Family Engine Block Mounting:
6x 7/16"-14 x 1" Hex Bolts

FE Family Engine Block Mounting:
8x 7/16"-14 x 1" Hex Bolts



Assembly Instructions:

Step 4: Attaching the BBF Bell Adapter Plate to the BBF Engine Assembly

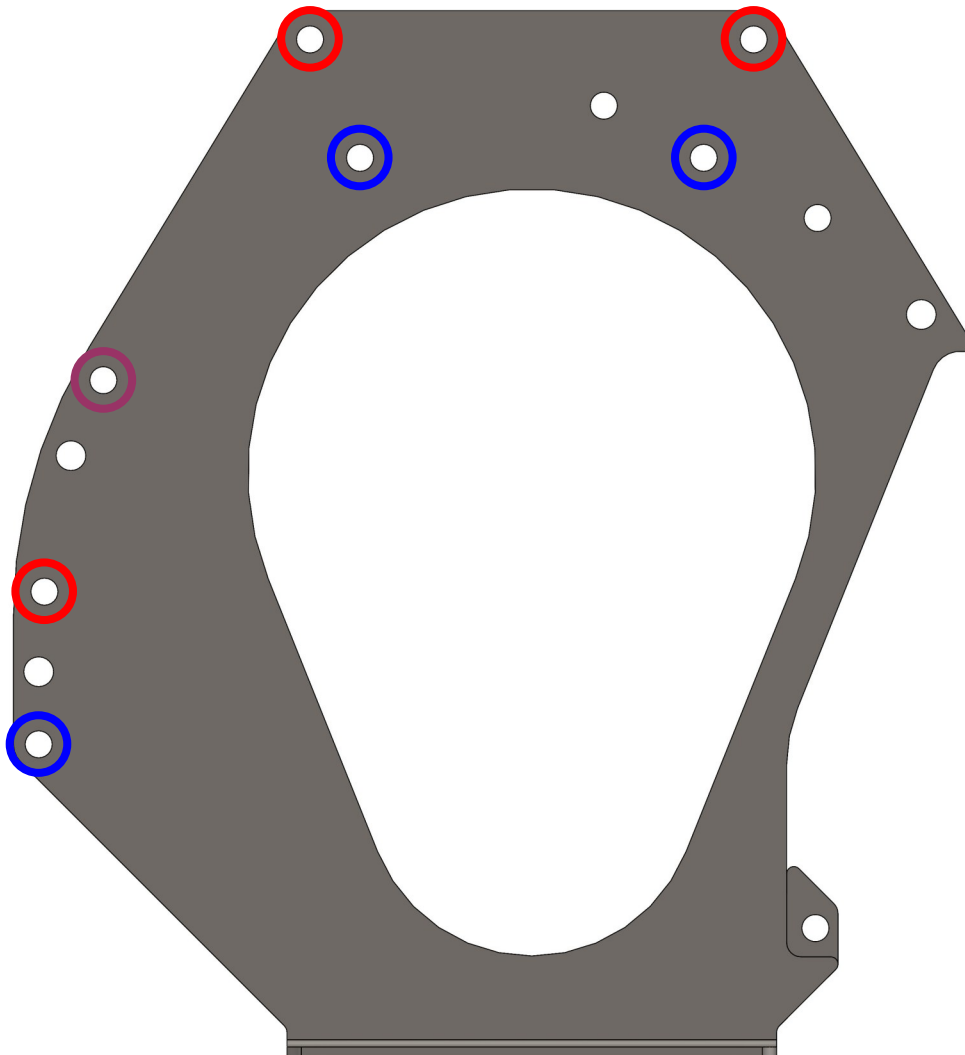
Required Components:

- 1x BBF Bell Adapter Plate

Required Hardware:

- 4x 7/16"-14 x 1" Hex Bolts
- 4x 7/16" Flat Washer

- Use the 7/16"-14 x 1" Hex Bolts to attach the BBF Bell Adapter Plate to the BBF Engine.
- Use the **red** holes to mount the bell adapter plate to the 385 family of engines. Use the holes circled in **blue** to mount the plate to the FE family of engines. The **purple** holes are used on both engine types.



Assembly Instructions:

Step 5: Attaching the Starter Indexing Plate to the BBF Engine Assembly/Bell Adapter Plate

Required Components:

- 1x 385 Starter Indexing Plate or FE Starter Indexing Plate

Required Hardware:

- 3x 7/16"-14 x 1" Hex Bolts
- 4x 7/16" Flat Washer

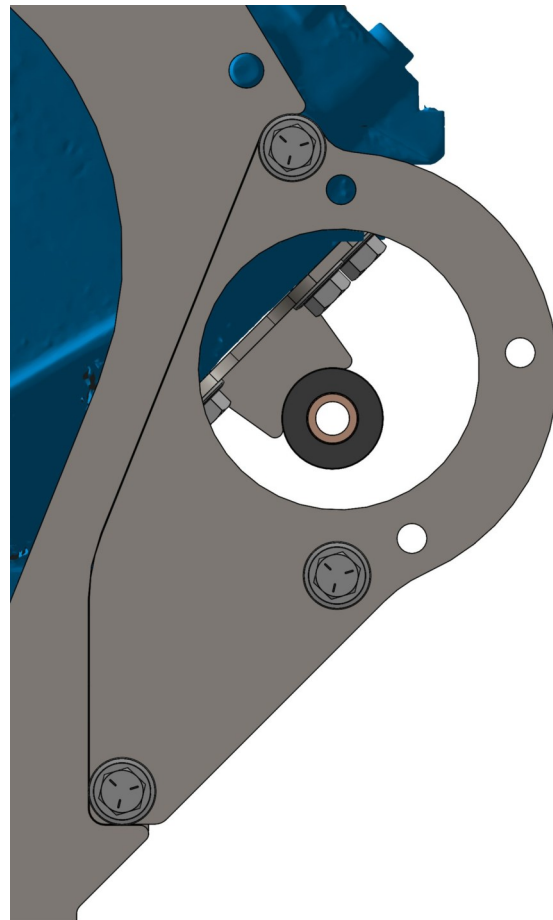
- 1x 7/16"-14 Nylock Nut

- Use the 7/16"-14 x 1" Hex Bolts to attach the desired Starter Indexing Plate to the BBF Engine/Bell Adapter Plate.

385 Family Engine Block Mounting:



FE Family Engine Block Mounting:



Assembly Instructions:

Step 6: Attaching the BBF Engine Assembly to the Running Engine Stand

Required Components:

- 1x BBF Engine Assembly

Required Hardware:

- 2x 1/2"-13 x 3.75" Hex Bolts
- 2x 7/16"-14 x 1" Hex Bolts
- 4x 7/16" Flat Washer
- 2x 1/2"-13 Nylock Nut
- 2x 7/16"-14 Nylock Nut

- Lower the BBF engine into place on the Running Engine Stand. Use the 1/2"-13 x 3.75" Hex Bolts to attach the BBF Motor Mounts to the BBF Motor Mount Brackets. Then, use the 7/16"-14 x 1" Hex Bolts to attach the BBF Bell Adapter Plate to the 2WD Transmission Mount.

