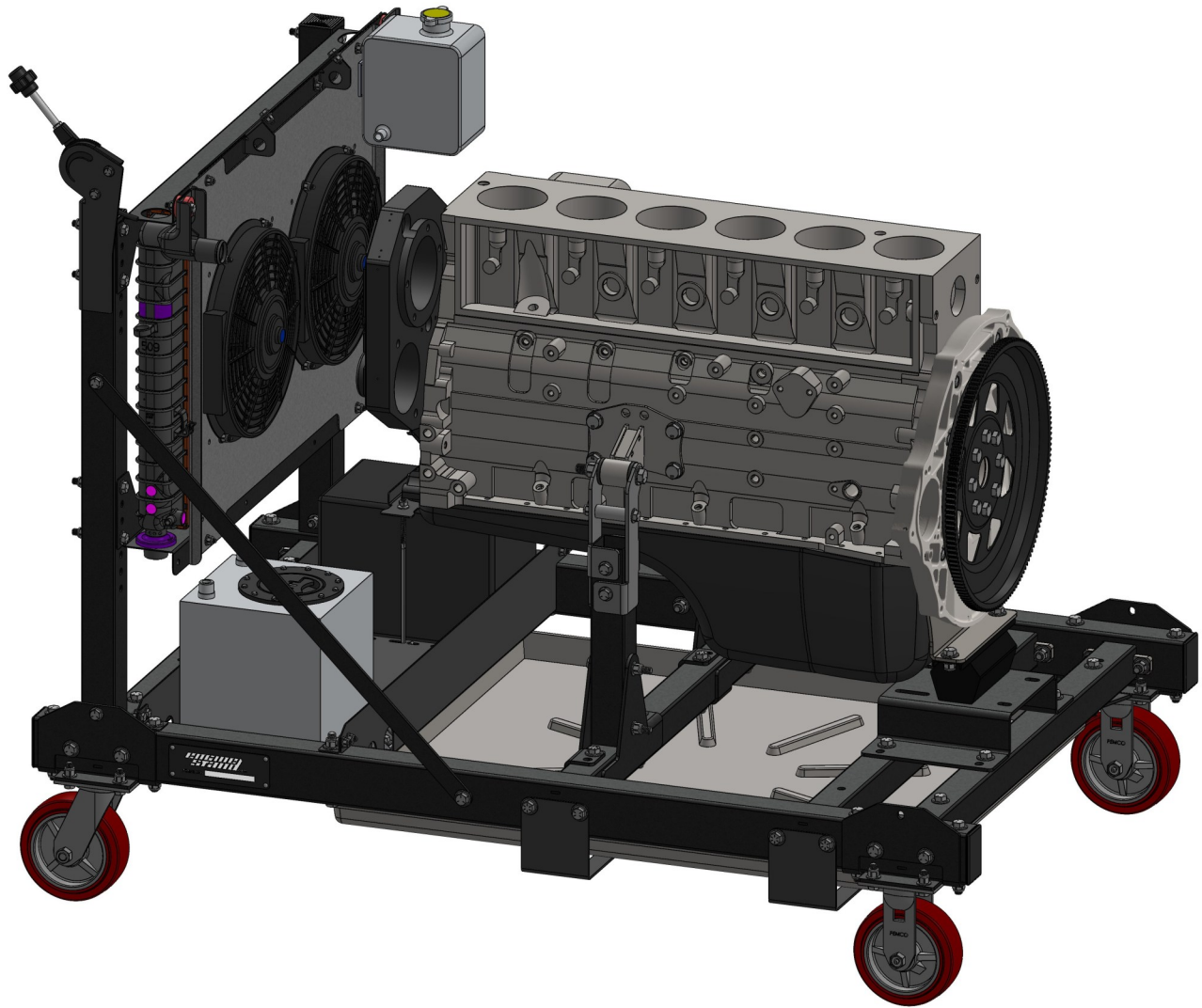


Running Engine Stand



Cummins B-Series Engine Assembly Instruction Manual

Important Notes for Assembly:

- This manual is for the Cummins B-Series motor mount kit for the Running Engine Stand assembly. If you have not yet started with the Main Assembly or ATW instructions, start there before returning here.
- Use care when handling parts. There may be sharp edges and holes on components. Using thick protective gloves is recommended during the assembly process.
- Each bolt and nut should have the appropriately sized washer placed between the fastener and the frame.
- Due to a large variety of factory bellhousing adapters, the factory bellhousing adapter and flywheel hardware is used in specific steps of these instructions. Make sure you have the necessary hardware before starting assembly.

Required Tools:

- Ratchet
- 5/8" Socket
- 3/4" Wrench
- 9/16" Wrench
- 3/4" Socket
- 9/16" Socket
- 5/8" Wrench
- 19mm Socket

**If you are experiencing problems upon installation—
DO NOT RETURN THIS PRODUCT!**

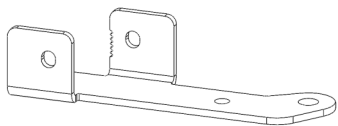
Most installation problems can be easily solved.

First contact technical support at:

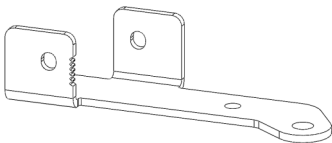
Service@mechman.com

1 (888) MECHMAN or 865-522-6166

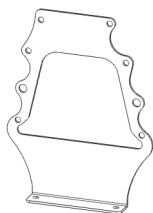
Included Components:



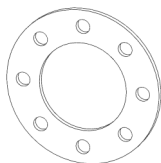
Cummins Motor Mount Part A 2x



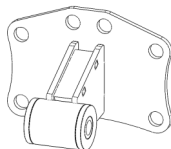
Cummins Motor Mount Part B 2x



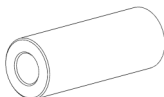
Cummins Bell Adapter Plate 1x



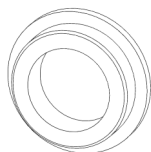
Cummins Flywheel Spacer 1x



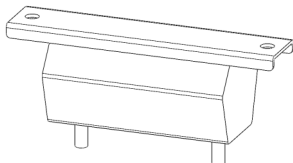
Cummins Motor Mount 2x



Cummins Motor Mount Spacer 2x

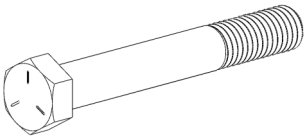


Flywheel Alignment Tool 1x

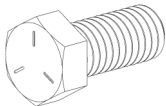


2WD Transmission Mount 1x

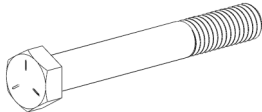
Included Hardware



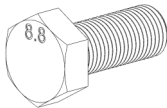
1/2"-13 x 3.75" Hex Bolt 2x



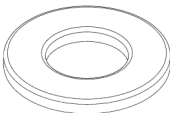
7/16"-14 x 1" Hex Bolt 2x



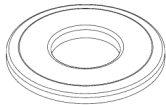
3/8"-16 x 3" Hex Bolt 6x



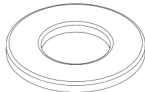
M12-1.75 x 30 Hex Bolt 8x



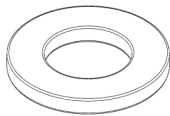
1/2" Flat Washer 4x



7/16" Flat Washer 4x



3/8" Flat Washer 12x



M12 Flat Washer 8x



1/2"-13 Nylock Nut 2x



7/16"-14 Nylock Nut 2x



3/8"-16 Nylock Nut 6x

Assembly Instructions:

Step 1: Attaching the Cummins Motor Mount Brackets to the Front Engine Mount Tubes

Required Components:

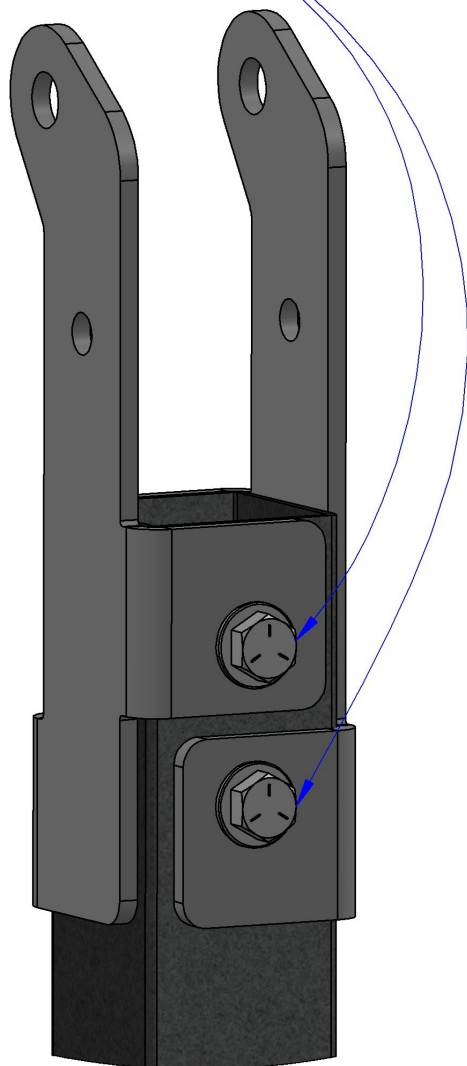
- 2x Cummins Motor Mount Part A
- 2x Cummins Motor Mount Part B

Required Hardware:

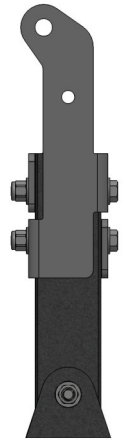
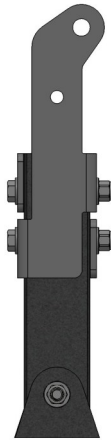
- 4x 3/8"-16 x 3" Hex Bolts
- 4x 3/8"-16 Nylock Nut
- 8x 3/8" Flat Washer

- Use the 3/8"-16 x 3" Hex Bolts to attach the Cummins Motor Mount Brackets to the Front Engine Mount Tubes.

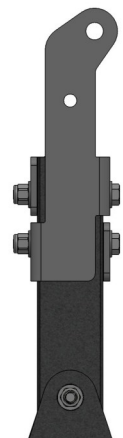
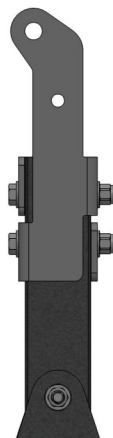
4x 3/8"-16 x 3" Hex Bolt



6BT: Tabs point towards center



4BT: Tabs point away from center



Assembly Instructions:

Step 2: Attaching the Cummins Motor Mount Spacers to the Cummins Motor Mount Brackets

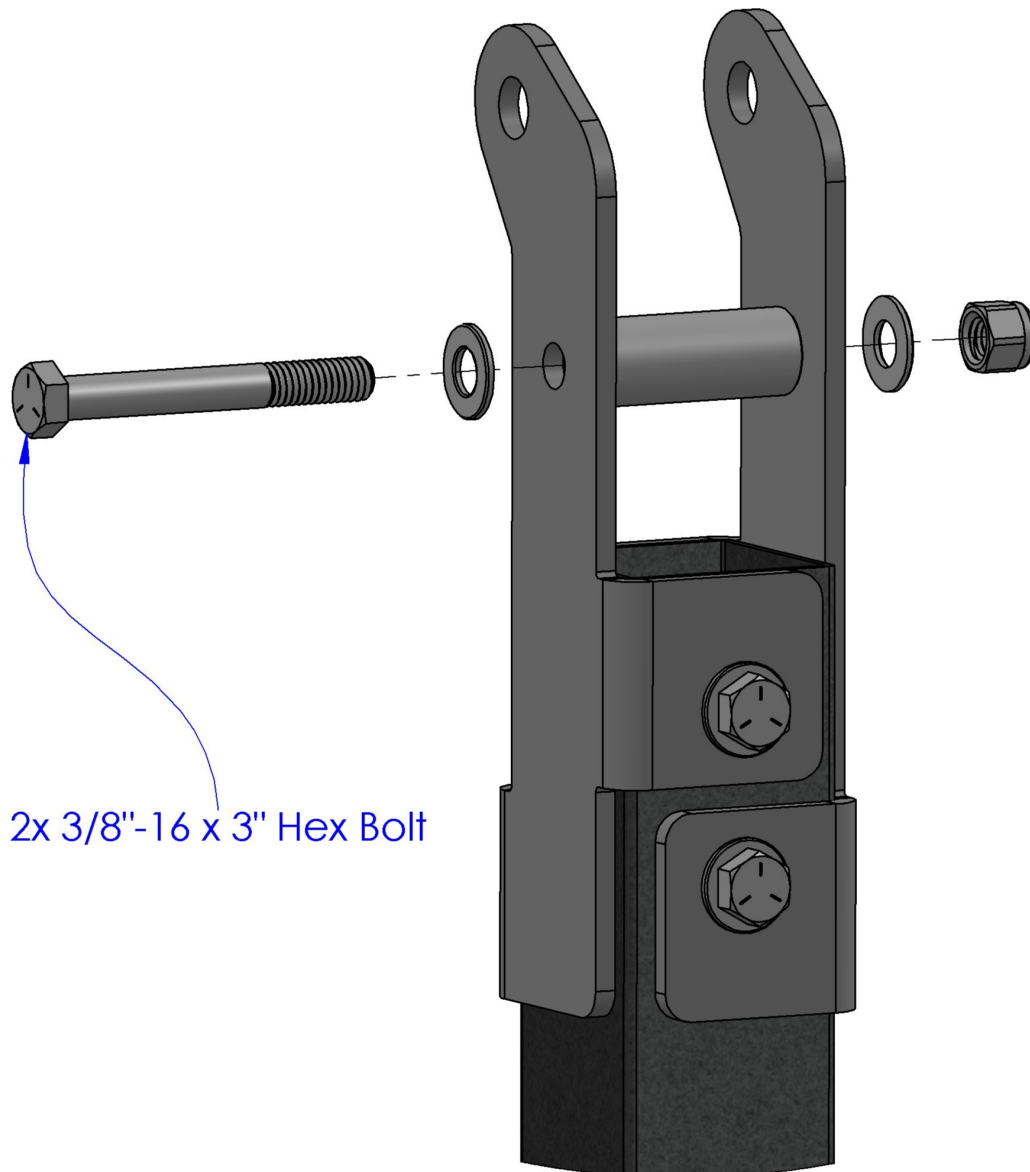
Required Components:

- 2x Cummins Motor Mount Spacers

Required Hardware:

- 2x 3/8"-16 x 3" Hex Bolts
- 2x 3/8"-16 Nylock Nut
- 4x 3/8" Flat Washer

- Use the 3/8"-16 x 3" Hex Bolts to clamp the Cummins Motor Mount Spacers in between the Cummins Motor Mount Brackets.

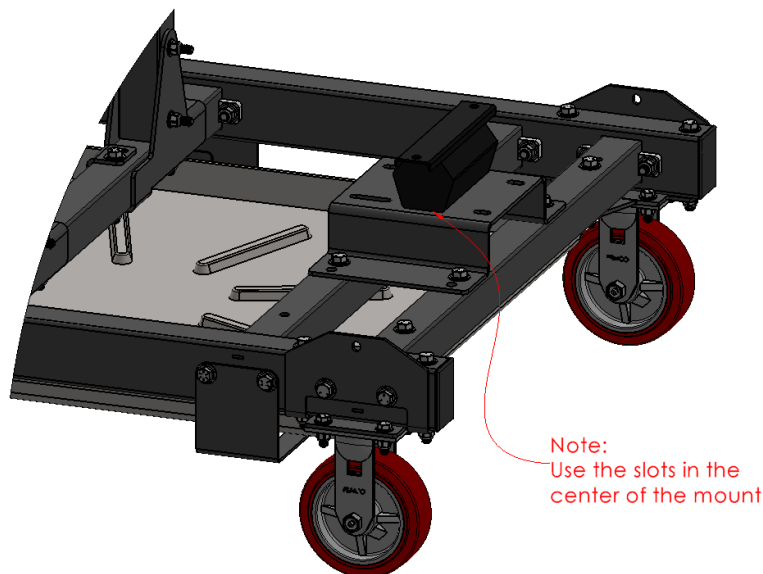
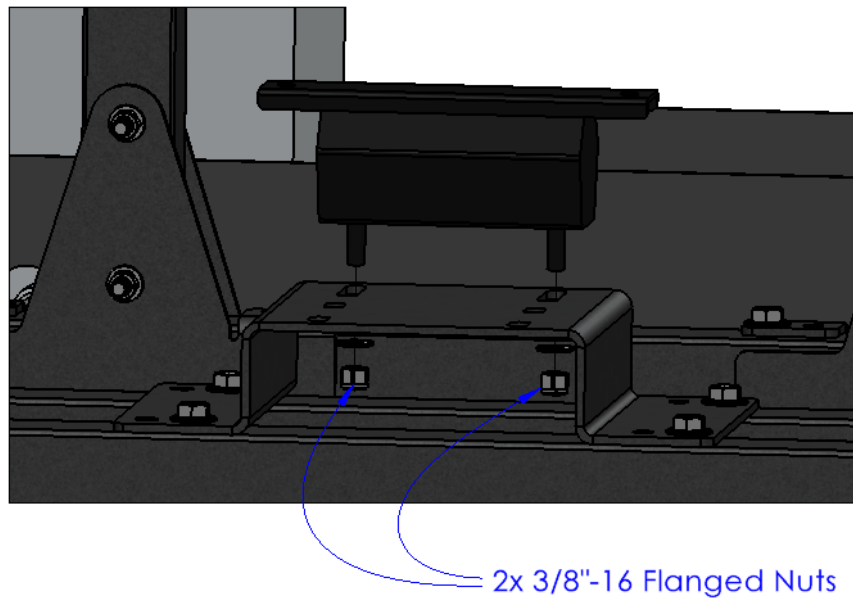


Assembly Instructions:

Step 3: Attaching the 2WD Transmission Mount to the Rear Engine Mount Bracket

Required Components: Required Hardware:

- 1x 2WD Transmission Mount
- 2x 3/8"-16 Flanged Nut (Included w/ Transmission Mount)
- Use the 3/8"-16 Flanged Nuts to attach the 2WD Transmission Mount to the Rear Engine Mount Bracket.
- Note: Place the 2WD Transmission Mount in the middle set of slots.



Assembly Instructions:

Step 4: Attaching the Cummins Motor Mounts to the Cummins Engine

Required Components:

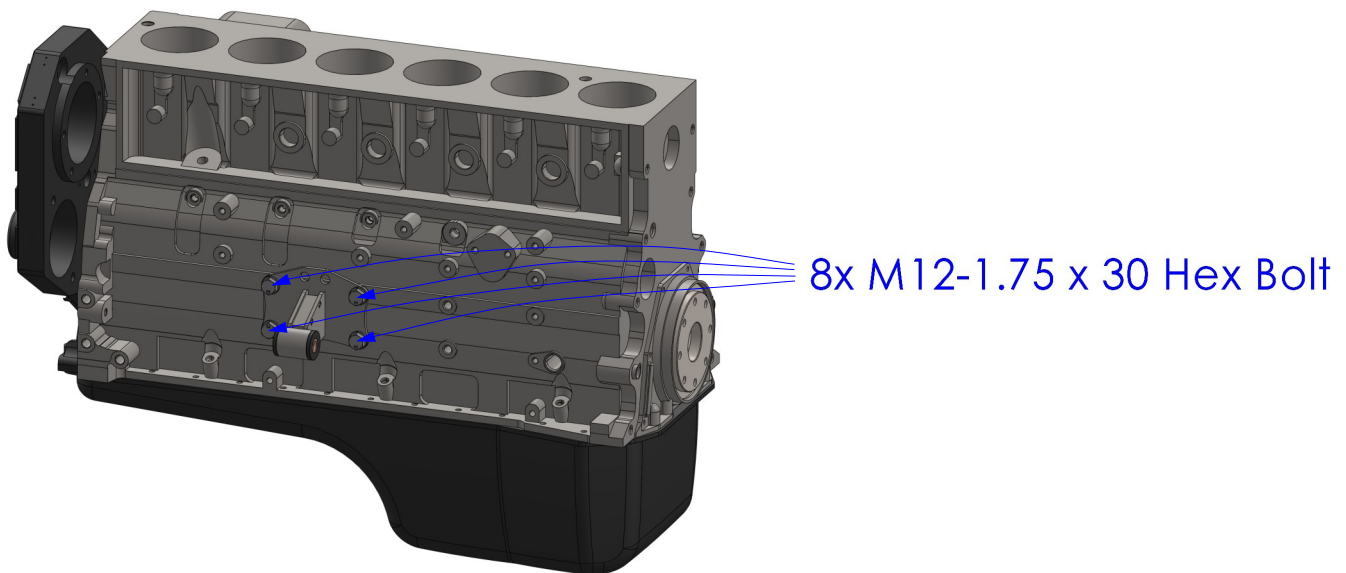
- 1x Cummins Engine
 - 2x Cummins Motor Mounts
- (Not Included)

Required Hardware:

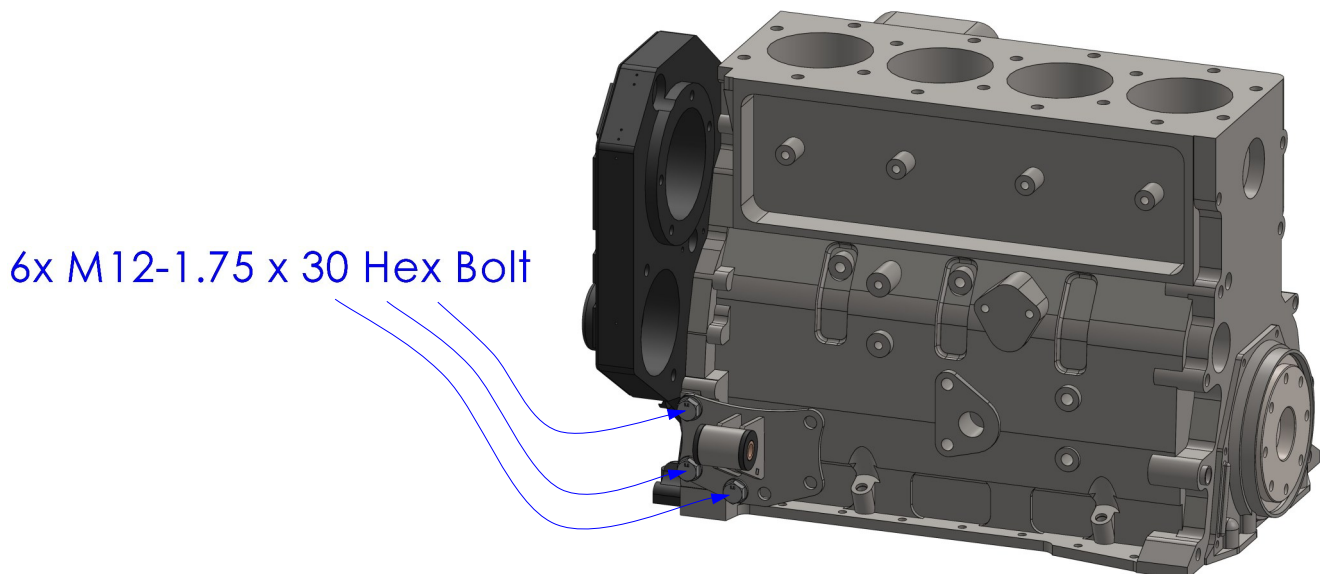
- 8x M12-1.75 x 30 Hex Bolts
- 8x M12 Flat Washer

- Use the M12-1.75 x 30 Hex Bolts to attach the Cummins Motor Mounts to the Cummins Engine Block.

6BT:



4BT:



Assembly Instructions:

Step 5: Attaching the Cummins Bell Adapter Plate to the Cummins Engine Assembly

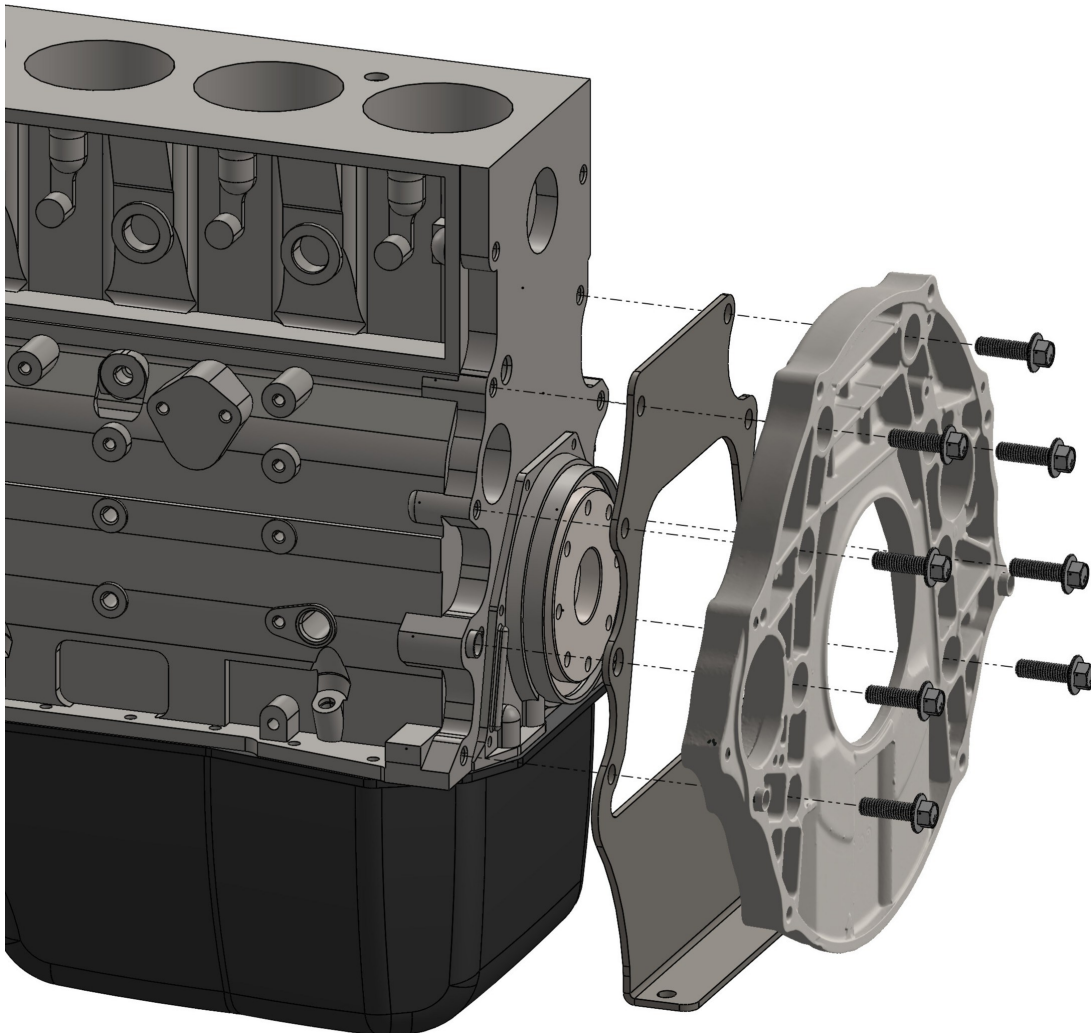
Required Components:

- 1x Cummins Bell Adapter Plate
- 1x Factory Bell Adapter

Required Hardware:

- 8x Factory Bell Adapter Hardware
(Not Included)

- Place the Cummins Bell Adapter plate between the Cummins B-Series engine and its factory bell adapter.
- **Note: Use the factory bellhousing adapter hardware to reinstall the bellhousing adapter (Approximately M12-1.75 x 40mm Flanged Hex Bolts, length may vary depending on factory bell adapter).**



Assembly Instructions:

Step 6: Attaching the Cummins Flywheel Spacer to the Cummins Engine Assembly

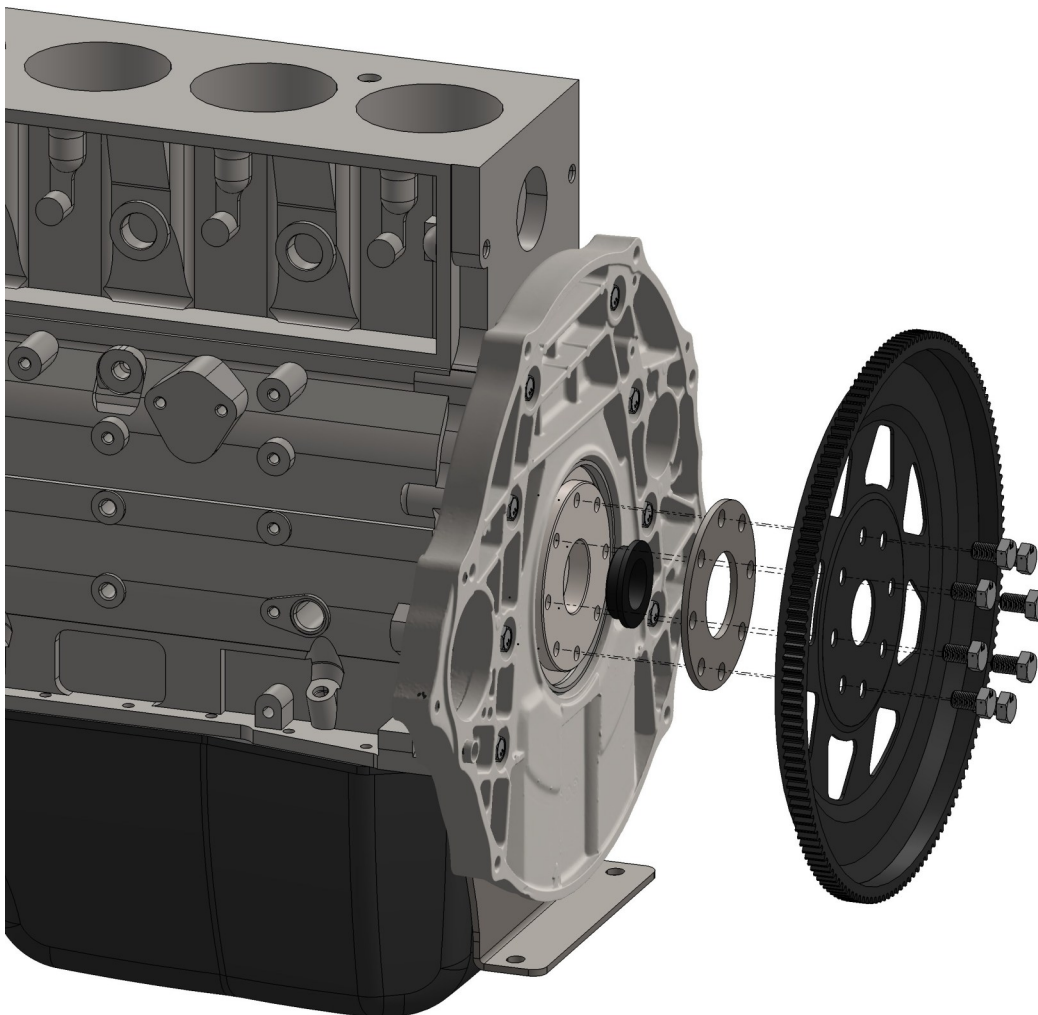
Required Components:

- 1x Cummins Flywheel Spacer
- 1x Factory Flywheel

Required Hardware:

- 8x Factory Flywheel Hardware
(Not Included)

- Place the Cummins Flywheel Spacer between the Cummins B-Series crankshaft and the factory flywheel. Make sure to include any factory spacers that may have been originally present when reassembling.
- **Note: Use the factory flywheel hardware to reinstall the flywheel (Approximately M12-1.25 x 20mm Hex Bolts, length may vary depending on factory flywheel). Use the optional included Flywheel Alignment Tool to help center the flywheel spacer on the crankshaft.**



Assembly Instructions:

Step 7: Attaching the Cummins Engine Assembly to the Running Engine Stand

Required Components:

- 1x Cummins Engine Assembly

Required Hardware:

- 2x 1/2"-13 x 3.75" Hex Bolts
 - 2x 7/16"-14 x 1" Hex Bolts
 - 4x 1/2" Flat Washer
 - 4x 7/16" Flat Washer
 - 2x 1/2"-13 Nylock Nut
 - 2x 7/16"-14 Nylock Nut
- Lower the Cummins engine into place on the Running Engine Stand. Use the 1/2"-13 x 3.75" Hex Bolts to attach the Cummins Motor Mounts to the Cummins Motor Mount Brackets. Then, use the 7/16"-14 x 1" Hex Bolts to attach the Cummins Bell Adapter Plate to the 2WD Transmission Mount.

