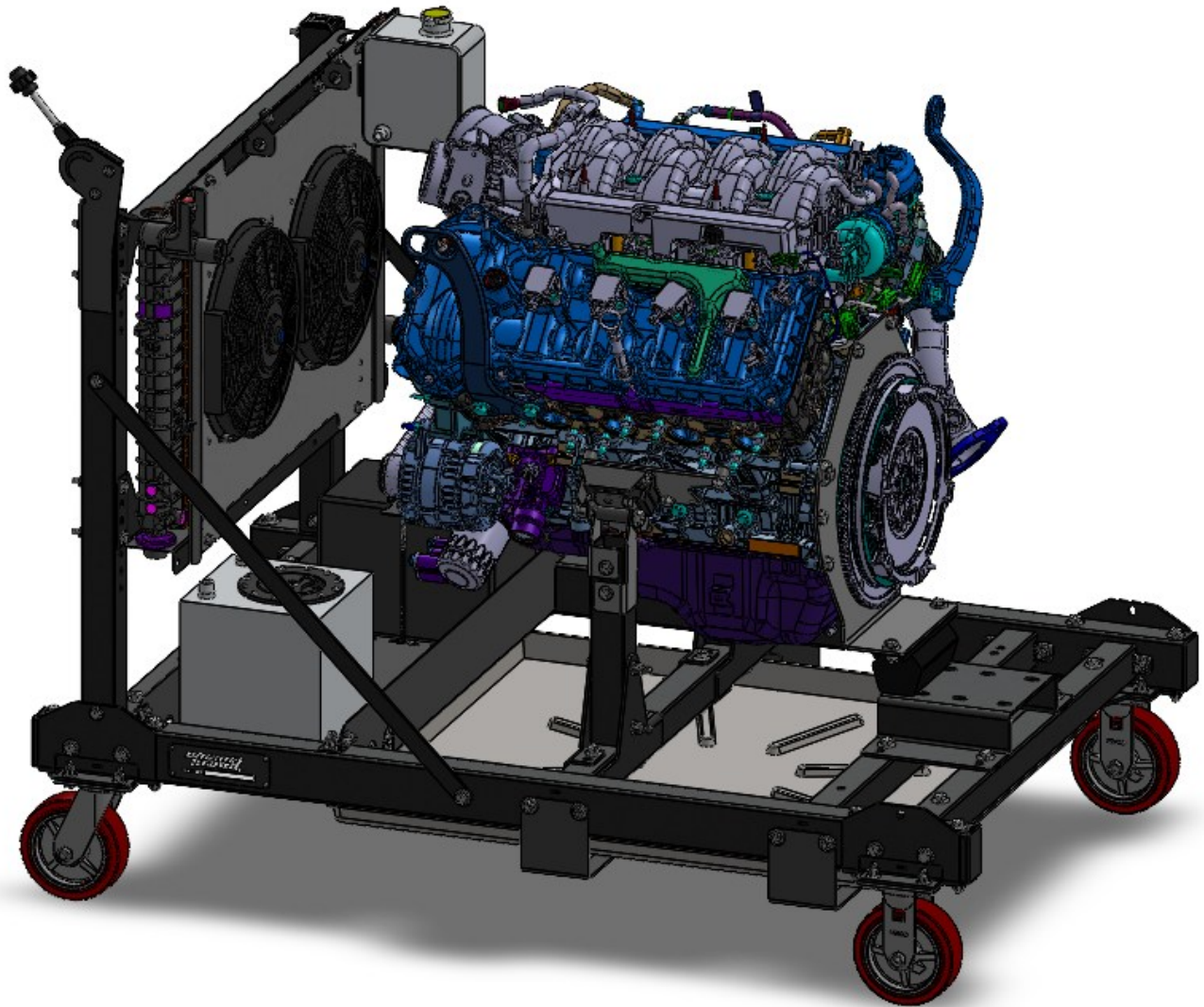


Running Engine Stand



Coyote Engine Assembly Instruction Manual

Important Notes for Assembly:

- This manual is for the Coyote motor mount kit for the Running Engine Stand assembly. If you have not yet started with the Main Assembly or ATW instructions, start there before returning here.
- Use care when handling parts. There may be sharp edges and holes on components. Using thick protective gloves is recommended during the assembly process.
- Each bolt and nut should have the appropriately sized washer placed between the fastener and the frame.

Required Tools:

- Ratchet
- 9/16" Wrench
- 3/4" Wrench
- 9/16" Socket
- 3/4" Socket
- 17mm Socket
- 5/8" Wrench
- 5/8" Socket

If you are experiencing problems upon installation—
DO NOT RETURN THIS PRODUCT!

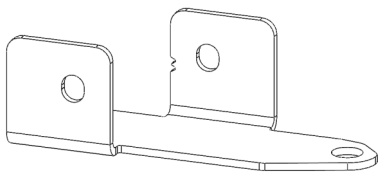
Most installation problems can be easily solved.

First contact technical support at:

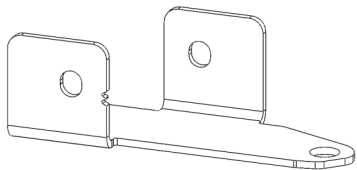
Service@mechman.com

1 (888) MECHMAN or 865-522-6166

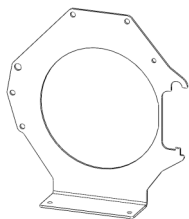
Included Components:



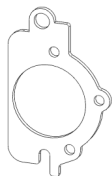
Coyote Motor Mount Part A 2x



Coyote Motor Mount Part B 2x



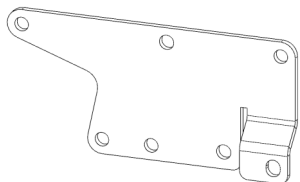
Coyote-Godzilla Bell Plate 1x



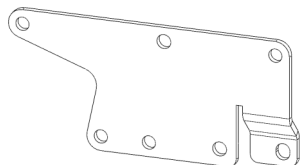
Coyote-Godzilla Starter Adapter 1x



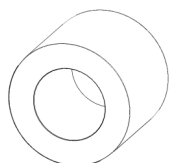
10R80 Starter Adapter 1x



Coyote-2283 Block Adapter - Driver 1x

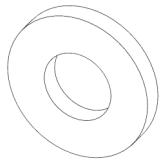


Coyote-2283 Block Adapter - Passenger 1x



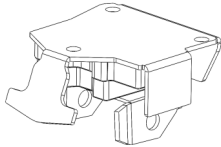
Coyote Motor Mount Spacer 6x

Included Components:



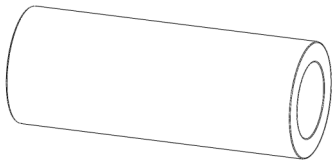
Coyote Bell Spacer

2x



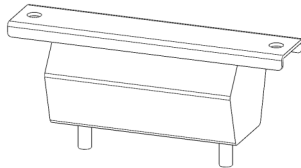
SB-BB Motor Mount

2x



SB-BB Motor Mount Spacer

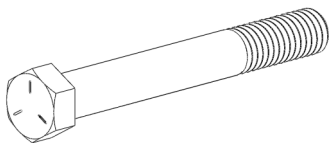
2x



2WD Transmission Mount

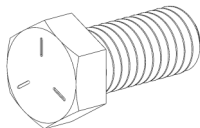
1x

Included Hardware



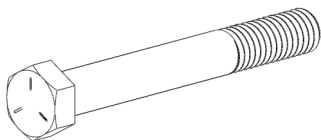
7/16"-14 x 3.5" Hex Bolt

2x



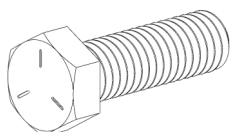
7/16"-14 x 1" Hex Bolt

2x



3/8"-16 x 3" Hex Bolt

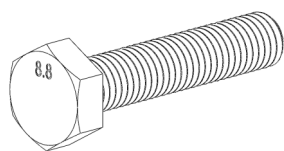
4x



3/8"-16 x 1.25" Hex Bolt

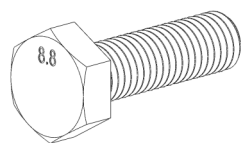
4x

Included Hardware



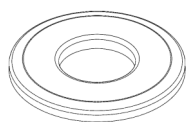
M10x1.5 x 50 Hex Bolt

8x



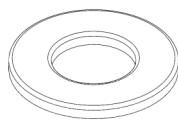
M10-1.5 x 35 Hex Bolt

7x



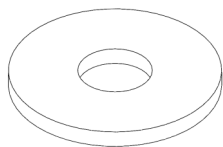
7/16" Flat Washer

8x



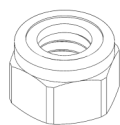
3/8" Flat Washer

29x



M10 Fender Washer

2x



7/16"-14 Nylock Nut

4x



3/8"-16 Nylock Nut

8x

Assembly Instructions:

Step 1: Attaching the Coyote Motor Mount Brackets to the Front Engine Mount Tubes

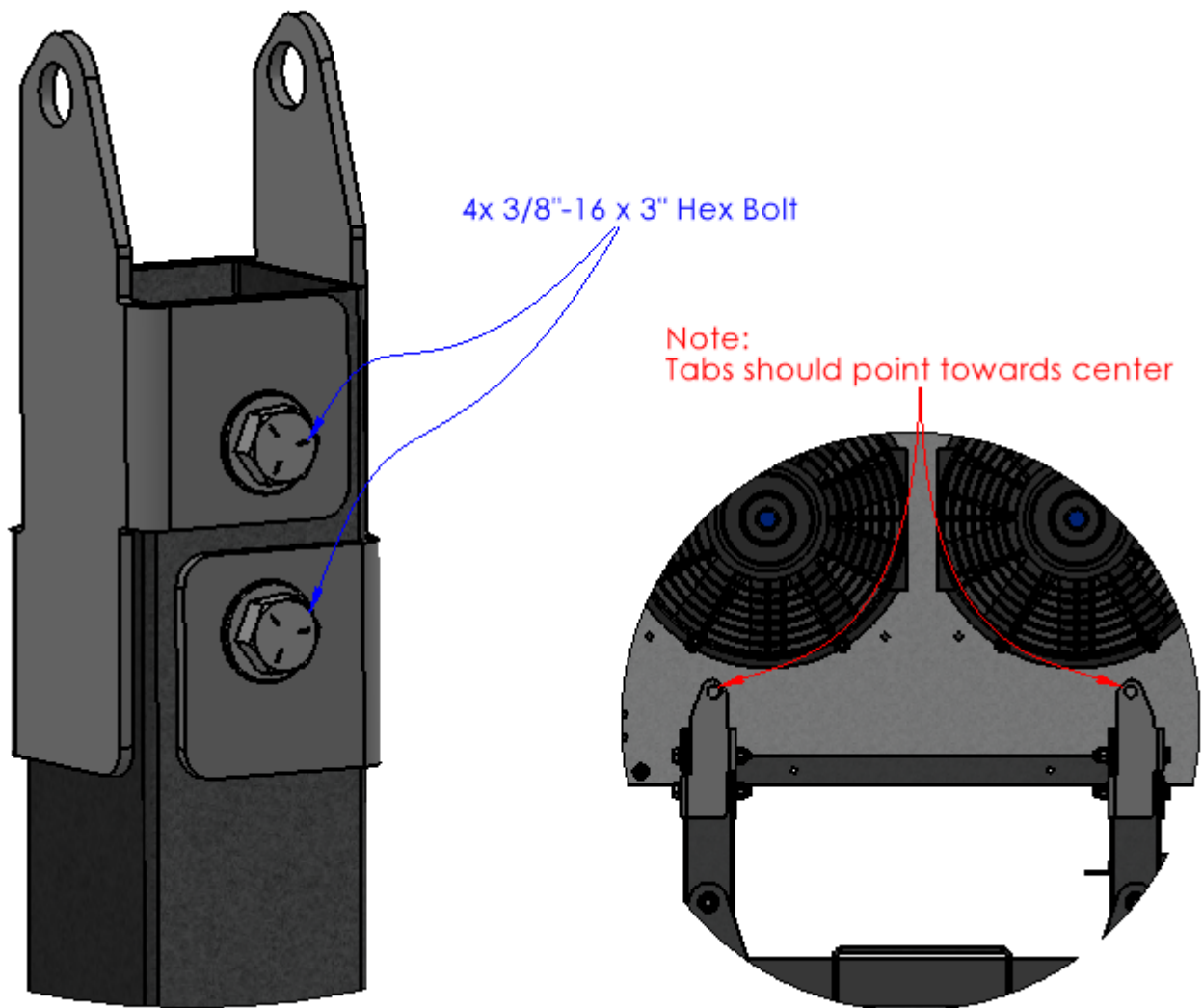
Required Components:

- 2x Coyote Motor Mount Part A
- 2x Coyote Motor Mount Part B

Required Hardware:

- 4x 3/8"-16 x 3" Hex Bolts
- 4x 3/8"-16 Nylock Nut
- 8x 3/8" Flat Washer

- Use the 3/8"-16 x 3" Hex Bolts to attach the Coyote Motor Mount Brackets to the Front Engine Mount Tubes.

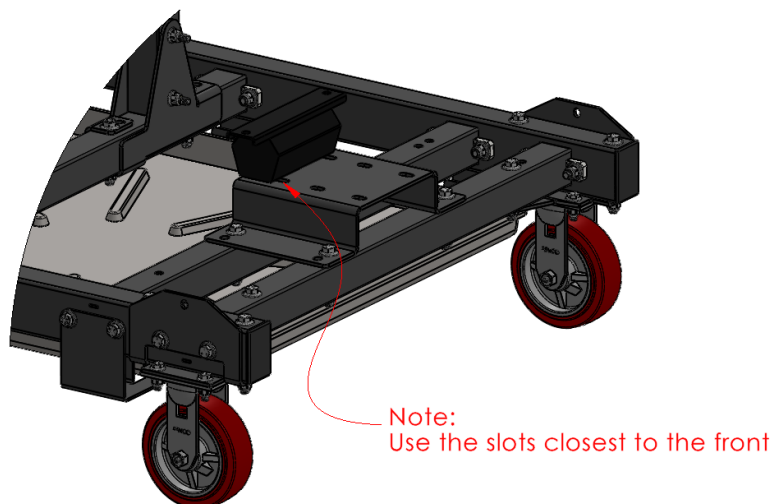
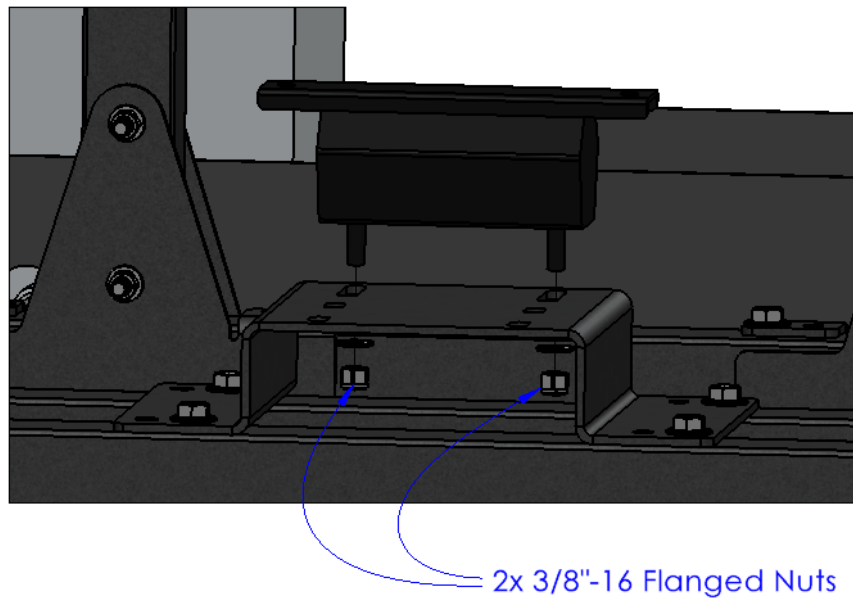


Assembly Instructions:

Step 2: Attaching the 2WD Transmission Mount to the Rear Engine Mount Bracket

Required Components: Required Hardware:

- 1x 2WD Transmission Mount
- 2x 3/8"-16 Flanged Nut (Included w/ Transmission Mount)
- Use the 3/8"-16 Flanged Nuts to attach the 2WD Transmission Mount to the Rear Engine Mount Bracket.
- Note: Place the 2WD Transmission Mount in the front set of slots.



Assembly Instructions:

Step 3: Attaching the SB-BB Motor Mounts to the Coyote Block Adapter Plates

Required Components:

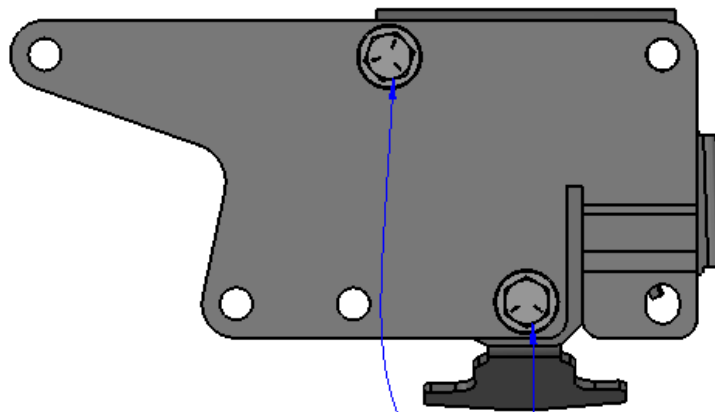
- 1x Coyote-2283 Block Adapter - Driver
- 1x Coyote-2283 Block Adapter - Passenger
- 2x SB-BB Motor Mount

Required Hardware:

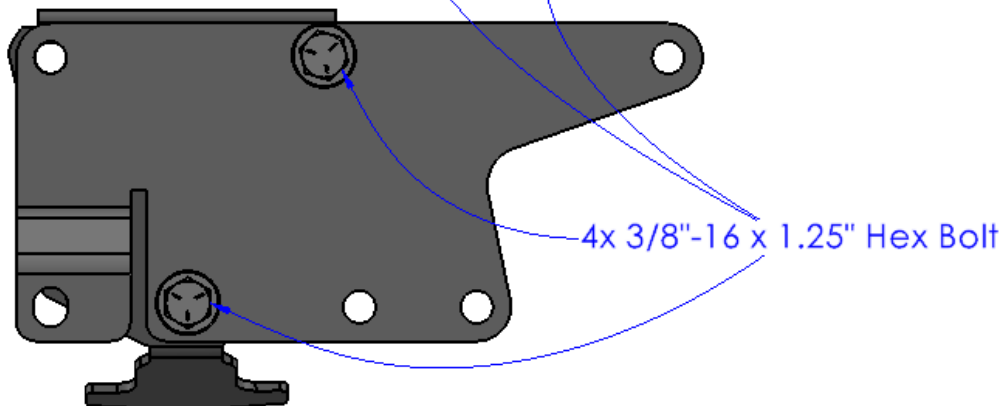
- 4x 3/8"-16 x 1.25" Hex Bolts
- 8x 3/8" Flat Washer
- 4x 3/8"-16 Nylock Nut

- Use the 3/8"-16 x 1.25" Hex Bolts to attach the SB-BB Motor Mounts to the Coyote Block Adapter Plates. Make sure the bolt heads are on the Adapter Plate side to avoid interference with the engine.
- One Adapter Plate should be made for the driver side, and one should be made for the passenger side (see below).

Driver Side:



Passenger Side:



4x 3/8"-16 x 1.25" Hex Bolt

Assembly Instructions:

Step 4: Attaching the Coyote Block Adapter Subassemblies to the Coyote Engine

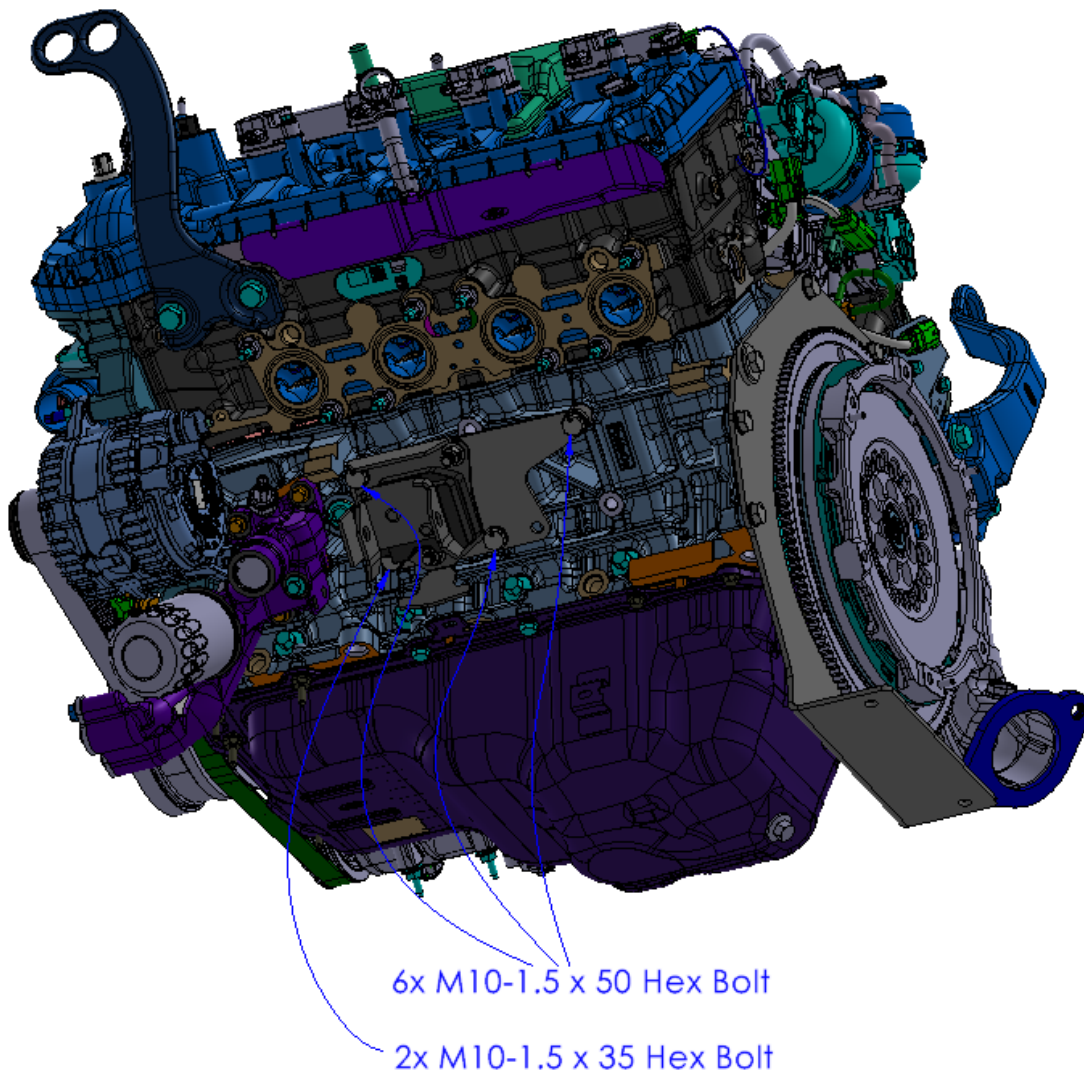
Required Components:

- 1x Coyote Engine
(Not Included)
- 6x Coyote Motor Mount Spacer
- 1x Coyote Block Adapter Subassembly—Driver
- 1x Coyote Block Adapter Subassembly—Passenger

Required Hardware:

- 6x M10-1.5 x 50 Hex Bolts
- 2x M10-1.5 x 35 Hex Bolts
- 8x 3/8" Flat Washer

- Use the M10-1.5 x 50 Hex Bolts in combination with the Coyote Motor Mount Spacers and the M10-1.5 x 35 Hex Bolts to attach the Coyote Block Adapter Subassemblies to the Coyote Engine Block



Assembly Instructions:

Step 5: Attaching the Coyote/Godzilla Bell Plate to the Coyote Engine Assembly

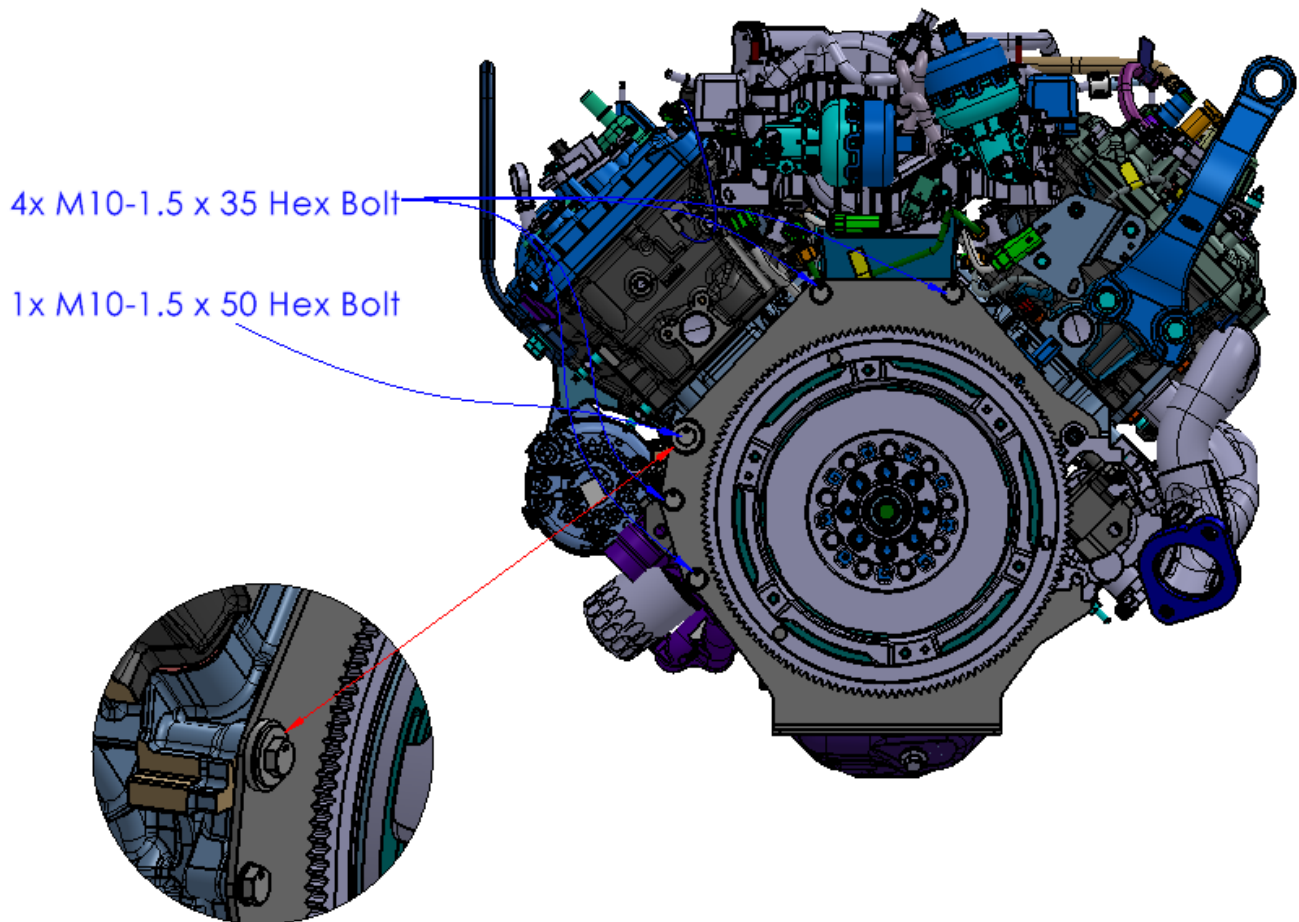
Required Components:

- 1x Coyote-Godzilla Bell Plate
- 1x Coyote Bell Spacer

Required Hardware:

- 1x M10-1.5 x 50 Hex Bolts
- 4x M10-1.5 x 35 Hex Bolts
- 4x 3/8" Flat Washer
- 1x M10 Fender Washer

- Use the M10-1.5 x 35 Hex Bolts to attach the top and bottom-left of the Coyote-Godzilla Bell Plate to the Coyote Engine Block. Use the M10-1.5 x 50 Hex Bolt in combination with the M10 Fender Washer and the Coyote Bell Spacer to fasten the Bell Plate to the Coyote Engine Block alignment pin.



Assembly Instructions:

Step 6: Attaching the Starter Adapter to the Coyote/Godzilla Bell Plate

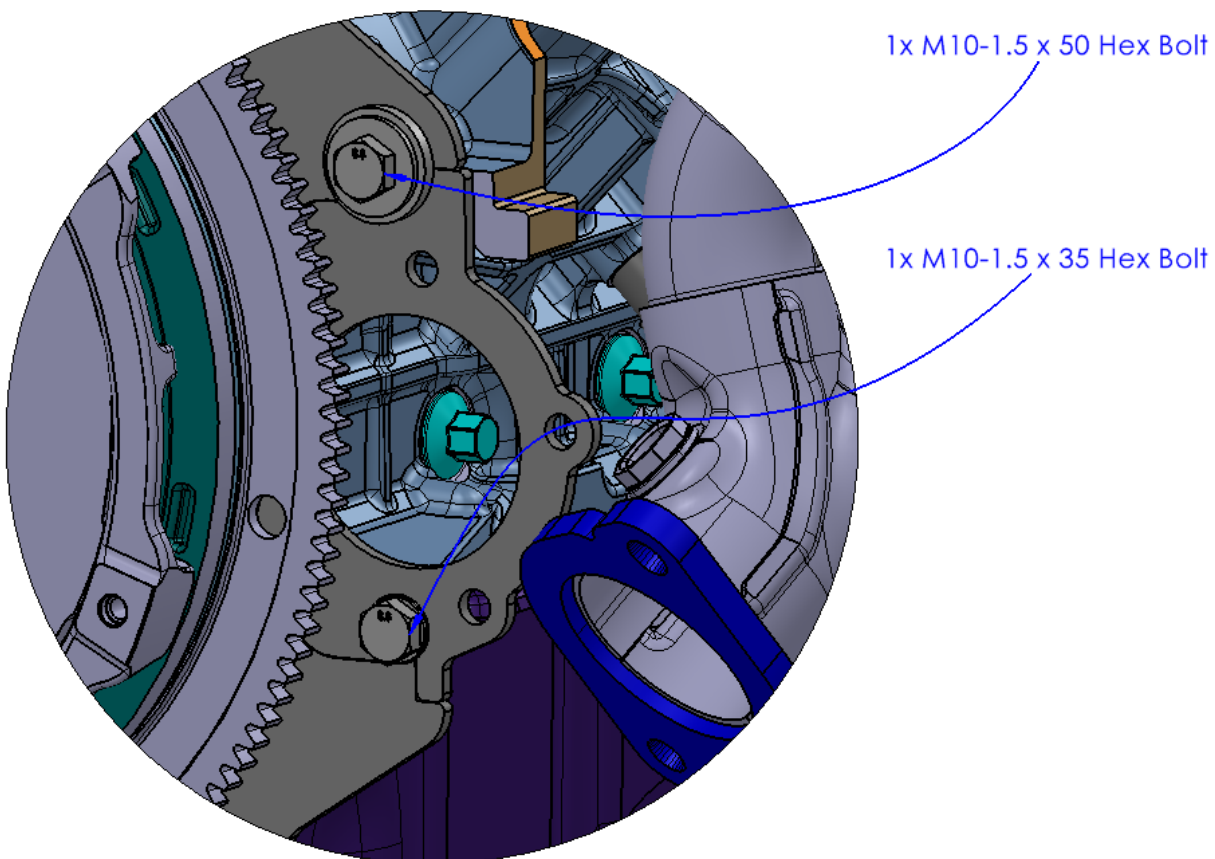
Required Components:

- 1x Coyote-Godzilla Starter Adapter
- 1x 10R80 Starter Adapter
- 1x Coyote Bell Spacer

Required Hardware:

- 1x M10-1.5 x 50 Hex Bolts
- 1x M10-1.5 x 35 Hex Bolts
- 1x 3/8" Flat Washer
- 1x M10 Fender Washer

- **Note: There are two different starter adapters included in the kit. Determine which of the two starter adapters you need to use based on the starter that came with your engine.**
- Place the desired Starter Adapter in the opening on the Coyote-Godzilla Bell Adapter. Use the M10-1.5 x 50 Hex Bolt in combination with the M10 Fender Washer and the Coyote Bell Spacer to clamp the Starter Adapter to the Coyote Engine Block. Then use the M10-1.5 x 35 Hex Bolt to fasten the bottom hole of the Starter Adapter.



Assembly Instructions:

Step 7: Attaching the Coyote Engine Assembly to the Running Engine Stand

Required Components:

- 1x Coyote Engine Assembly
- 2x SB-BB Motor Mount Spacer

Required Hardware:

- 2x 7/16"-14 x 3.5" Hex Bolt
- 2x 7/16"-14 x 1" Hex Bolt
- 8x 7/16" Flat Washer
- 4x 7/16"-14 Nylock Nut

- Lower the Coyote engine into place on the Running Engine Stand. Use the 7/16"-14 x 3.5" Hex Bolts in combination with the SB-BB Motor Mount Spacers to attach the SB-BB Motor Mounts to the Coyote Motor Mount Brackets. Then, use the 7/16"-14 x 1" Hex Bolts to attach the Coyote-Godzilla Bell Plate to the 2WD Transmission Mount.

