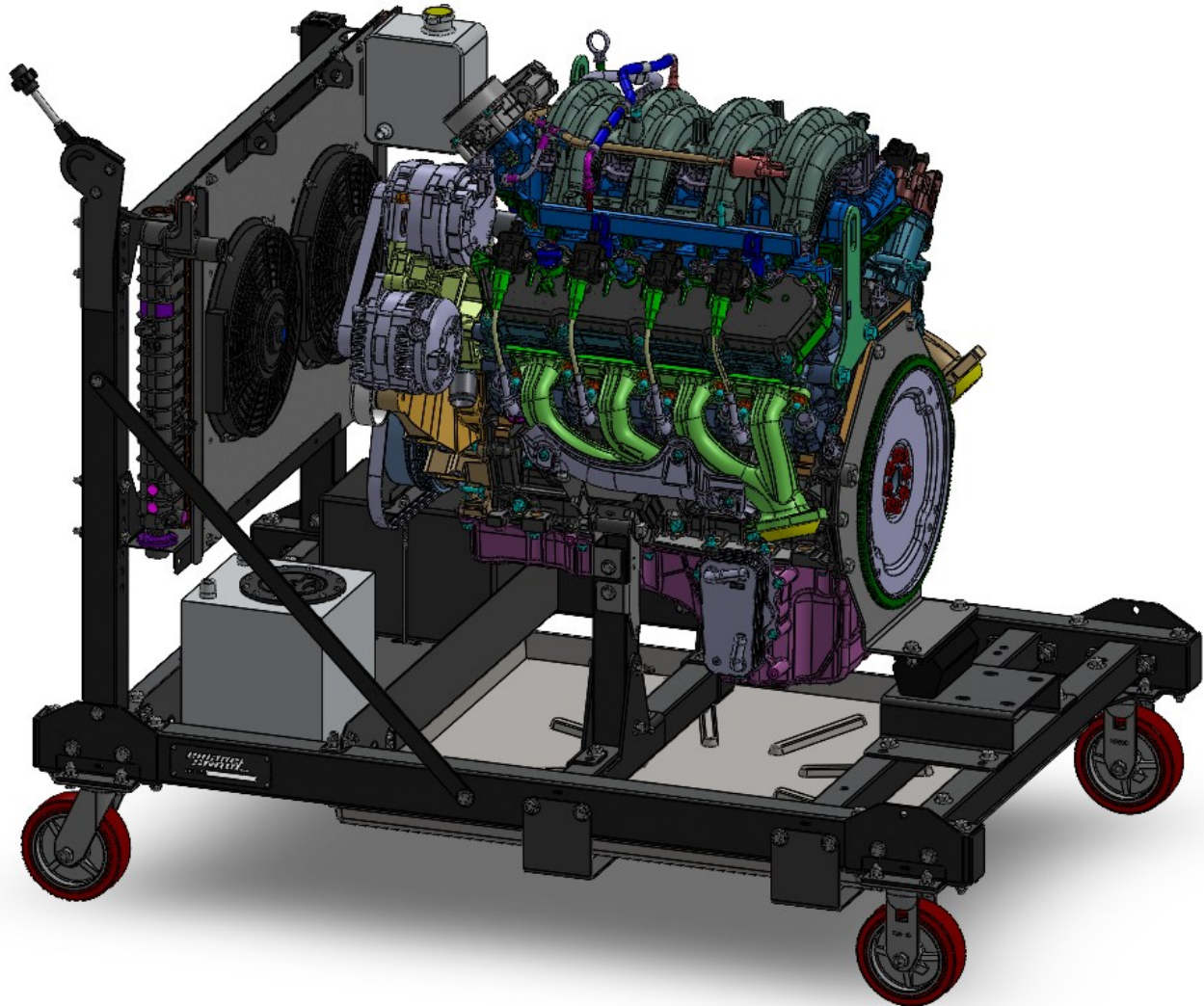


# Running Engine Stand



# Godzilla Engine Assembly Instruction Manual

## Important Notes for Assembly:

- This manual is for the Godzilla motor mount kit for the Running Engine Stand assembly. If you have not yet started with the Main Assembly or ATW instructions, start there before returning here.
- Use care when handling parts. There may be sharp edges and holes on components. Using thick protective gloves is recommended during the assembly process.
- Each bolt and nut should have the appropriately sized washer placed between the fastener and the frame.

### Required Tools:

- Ratchet
- 9/16" Wrench
- 3/4" Wrench
- 9/16" Socket
- 3/4" Socket
- 17mm Socket
- 5/8" Wrench
- 5/8" Socket

If you are experiencing problems upon installation—  
DO NOT RETURN THIS PRODUCT!

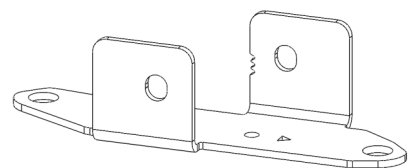
**Most installation problems can be easily solved.**

First contact technical support at:

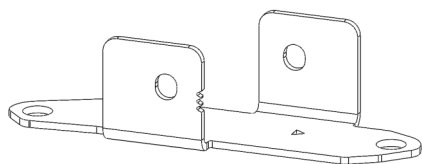
**Service@mechman.com**

**1 (888) MECHMAN or 865-522-6166**

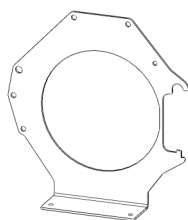
# Included Components:



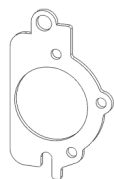
Godzilla Motor Mount Part A 2x



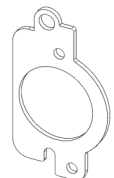
Godzilla Motor Mount Part B 2x



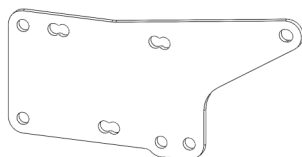
Coyote-Godzilla Bell Plate 1x



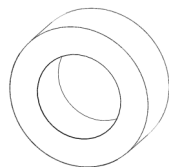
Coyote-Godzilla Starter Adapter 1x



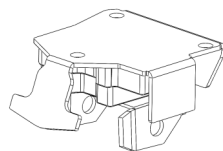
10R80 Starter Adapter 1x



Godzilla Block Adapter Plate 2x

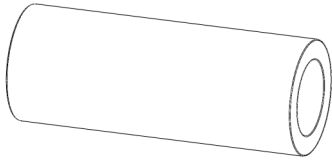


Godzilla Bell Spacer 2x



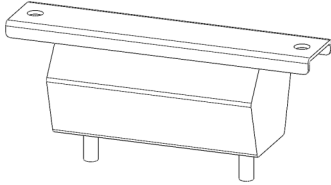
SB-BB Motor Mount 2x

# Included Components:



SB-BB Motor Mount Spacer

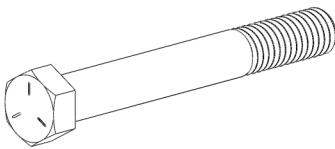
2x



2WD Transmission Mount

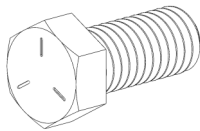
1x

# Included Hardware



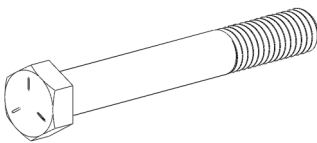
7/16"-14 x 3.5" Hex Bolt

2x



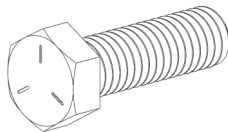
7/16"-14 x 1" Hex Bolt

2x



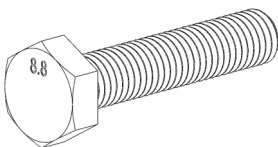
3/8"-16 x 3" Hex Bolt

4x



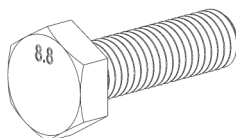
3/8"-16 x 1.25" Hex Bolt

6x



M10x1.5 x 50 Hex Bolt

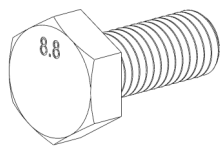
2x



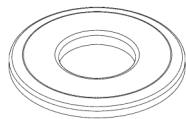
M10-1.5 x 35 Hex Bolt

10x

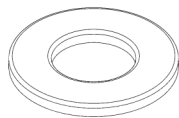
# Included Hardware



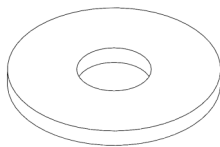
M10-1.5 x 25 Hex Bolt 3x



7/16" Flat Washer 8x



3/8" Flat Washer 33x



M10 Fender Washer 2x



7/16"-14 Nylock Nut 4x



3/8"-16 Nylock Nut 10x

# Assembly Instructions:

## Step 1: Attaching the Godzilla Motor Mount Brackets to the Front Engine Mount Tubes

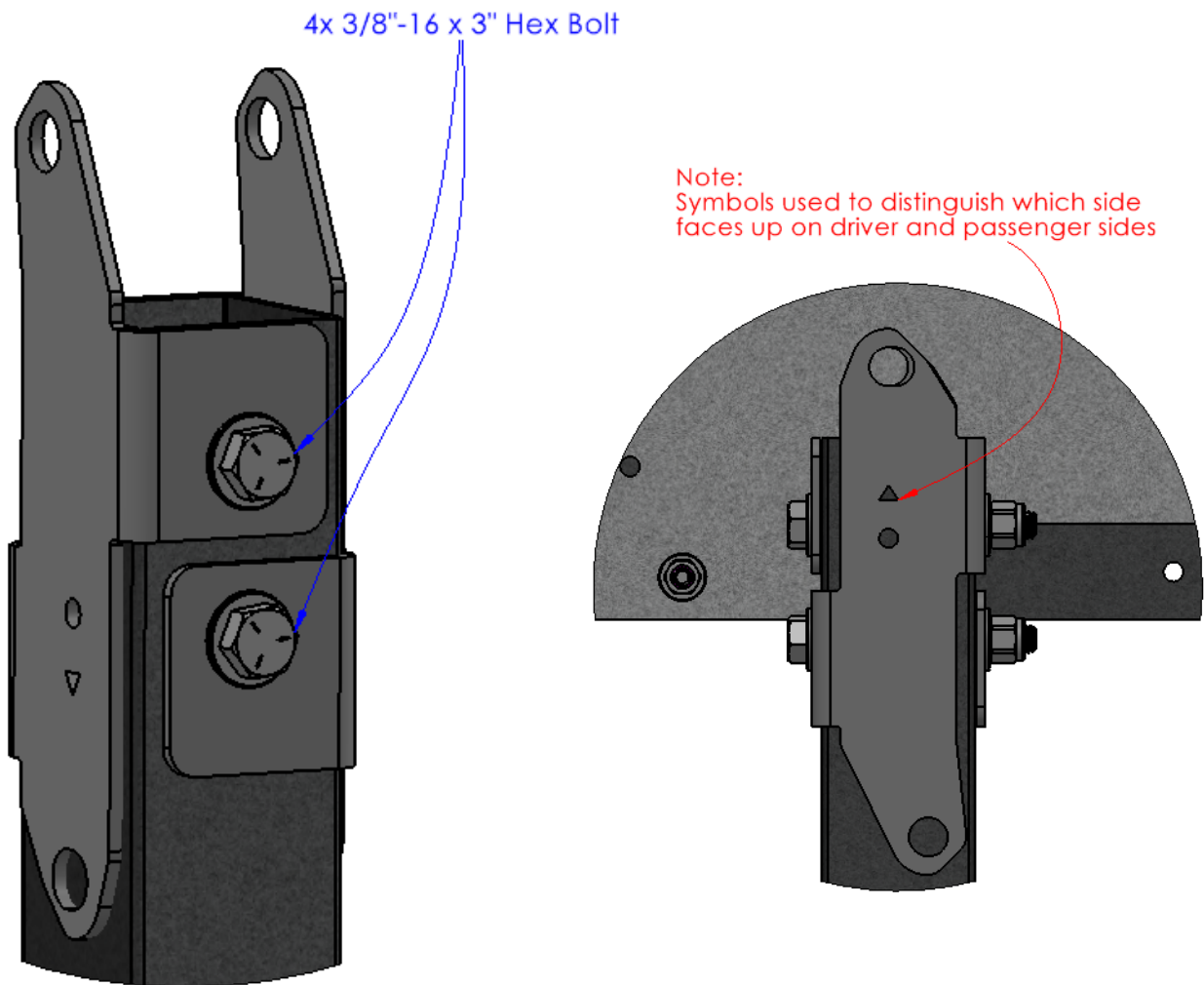
### Required Components:

- 2x Godzilla Motor Mount Part A
- 2x Godzilla Motor Mount Part B

### Required Hardware:

- 4x 3/8"-16 x 3" Hex Bolts
- 4x 3/8"-16 Nylock Nut
- 8x 3/8" Flat Washer

- Use the 3/8"-16 x 3" Hex Bolts to attach the Godzilla Motor Mount Brackets to the Front Engine Mount Tubes.
- **Note: For the driver side brackets, the triangle symbol should be on top. For the passenger side brackets, the circle symbol should be on top.**

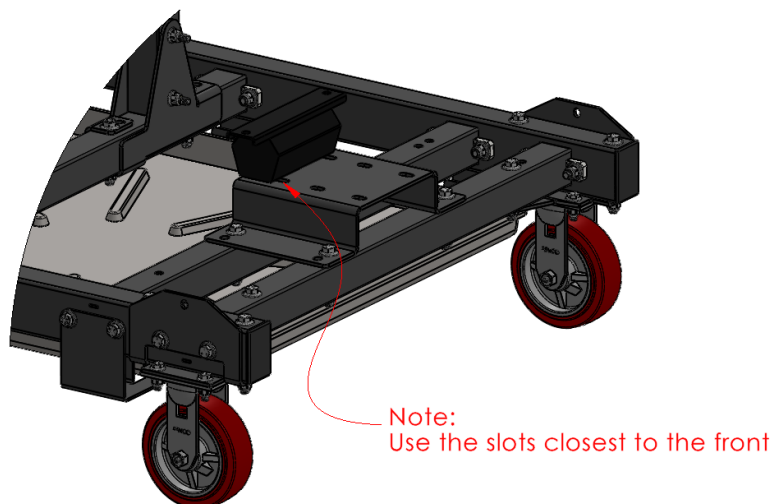
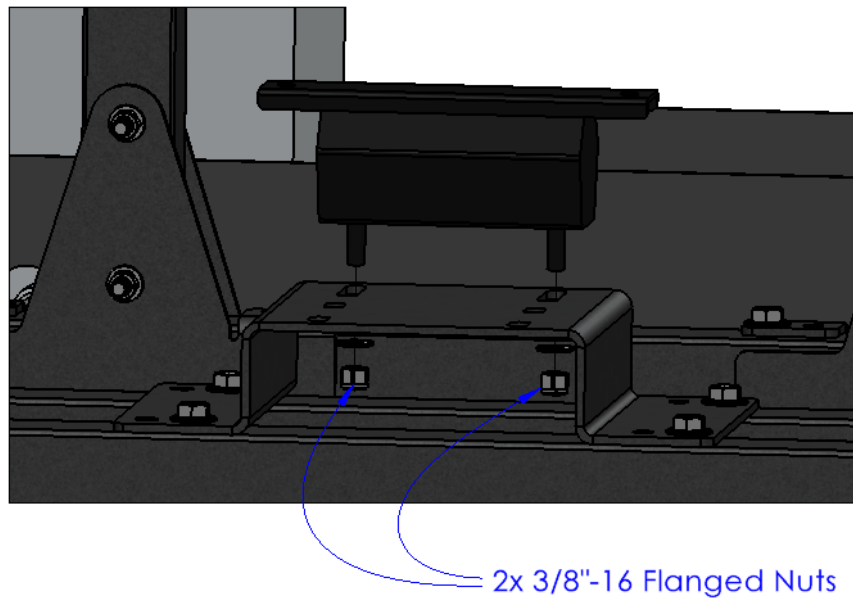


# Assembly Instructions:

## Step 2: Attaching the 2WD Transmission Mount to the Rear Engine Mount Bracket

Required Components:      Required Hardware:

- 1x 2WD Transmission Mount
- 2x 3/8"-16 Flanged Nut (Included w/ Transmission Mount)
- Use the 3/8"-16 Flanged Nuts to attach the 2WD Transmission Mount to the Rear Engine Mount Bracket.
- Note: Place the 2WD Transmission Mount in the front set of slots.



# Assembly Instructions:

## Step 3: Attaching the SB-BB Motor Mounts to the Godzilla Block Adapter Plates

### Required Components:

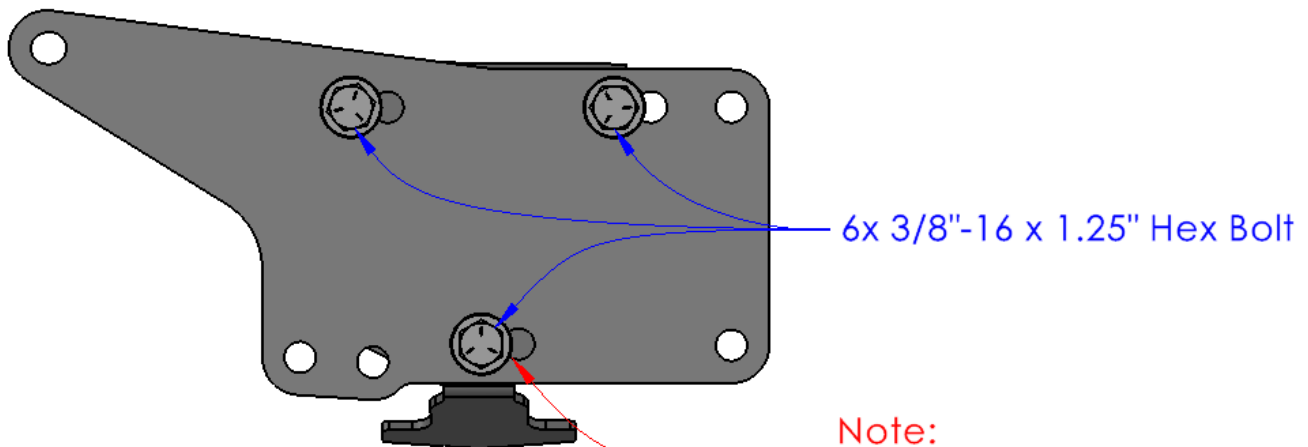
- 2x SB-BB Motor Mount
- 2x Godzilla Block Adapter Plate

### Required Hardware:

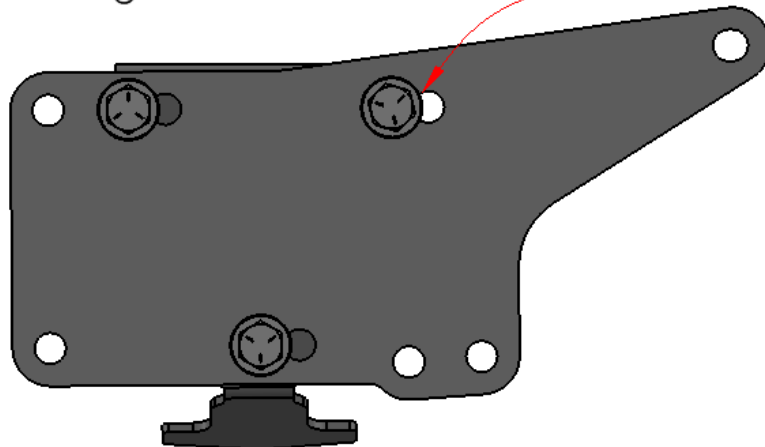
- 6x 3/8"-16 x 1.25" Hex Bolts
- 6x 3/8"-16 Nylock Nut
- 12x 3/8" Flat Washer

- Use the 3/8"-16 x 1.25" Hex Bolts to attach the SB-BB Motor Mounts to the Godzilla Block Adapter Plates. Make sure the bolt heads are on the Adapter Plate side to avoid interference with the engine.
- The Godzilla Block Adapter Plate is universal to both sides of the engine. One Adapter Plate should be made for the driver side, and one should be made for the passenger side (see below). The leftmost set of holes should be used for both assembly orientations.

Driver Side:



Passenger Side:



Note:  
Take care to use the  
correct set of holes for  
both plate orientations



# Assembly Instructions:

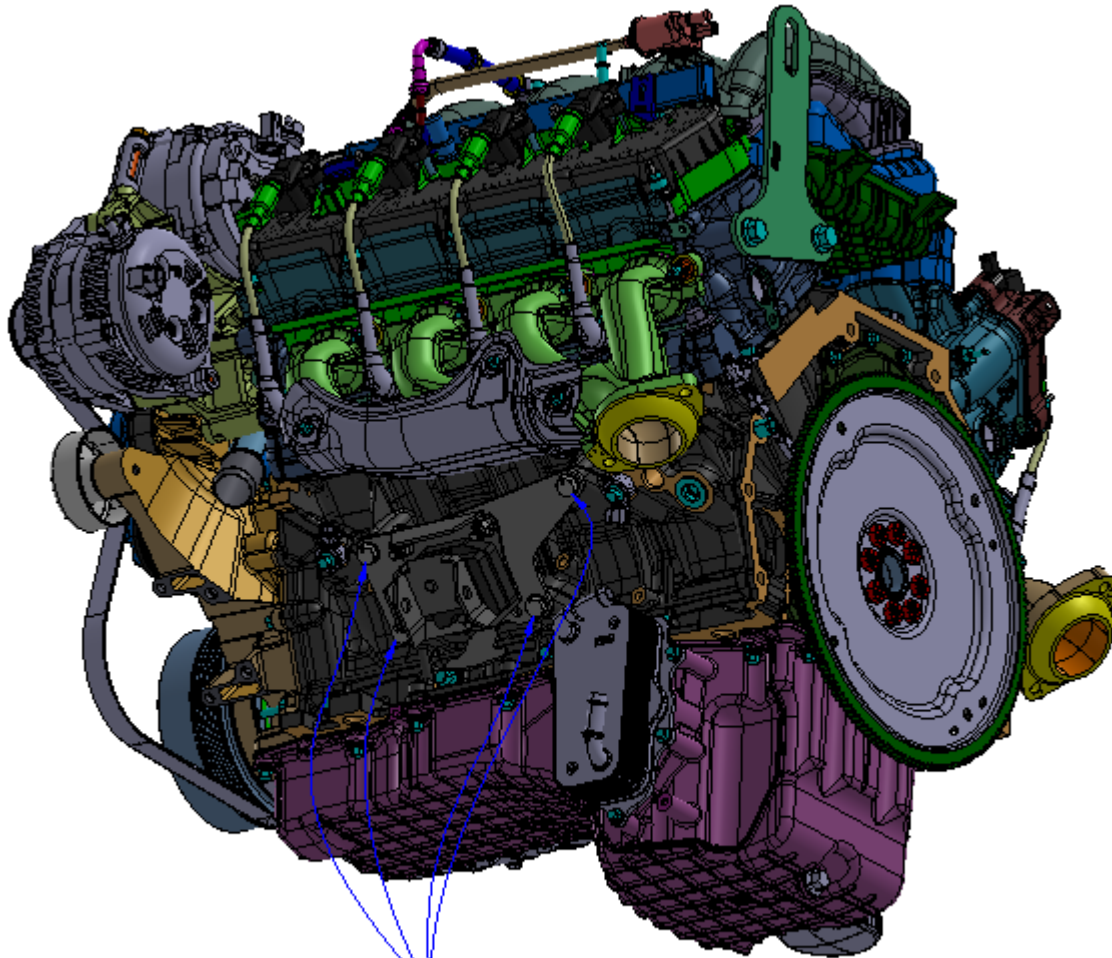
## Step 4: Attaching the Godzilla Block Adapter Subassemblies to the Godzilla Engine

### Required Components:

- 1x Godzilla Engine  
(Not Included)
  - 1x Godzilla Block Adapter Subassembly—Driver
  - 1x Godzilla Block Adapter Subassembly—Passenger
- Use the M10-1.5 x 35 Hex Bolts to attach the Godzilla Block Adapter Subassemblies to the Godzilla Engine Block

### Required Hardware:

- 8x M10-1.5 x 35 Hex Bolts
- 8x 3/8" Flat Washer



8x M10-1.5 x 35 Hex Bolt

# Assembly Instructions:

## Step 5: Attaching the Coyote/Godzilla Bell Plate to the Godzilla Engine Assembly

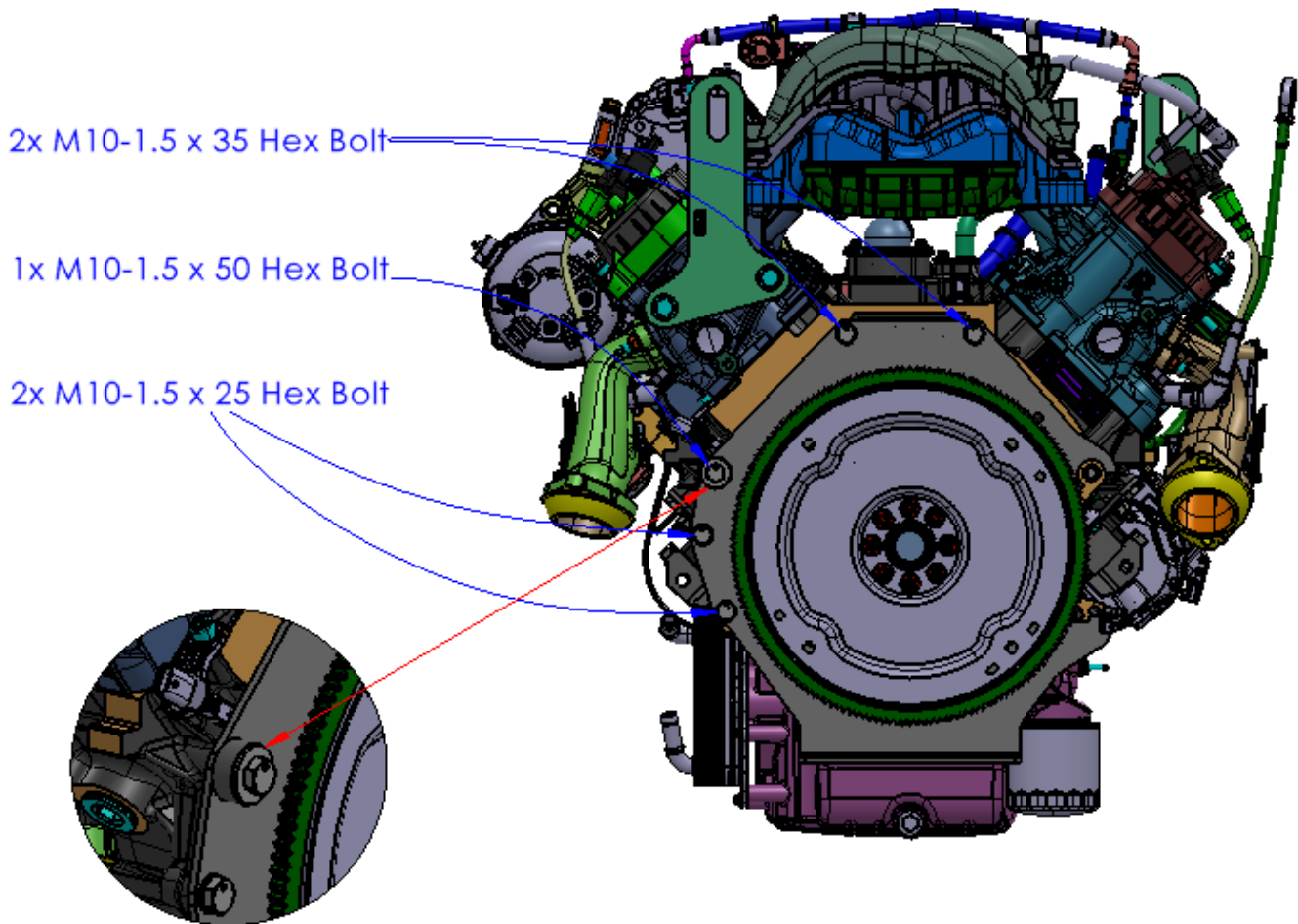
### Required Components:

- 1x Coyote-Godzilla Bell Plate
- 1x Godzilla Bell Spacer

### Required Hardware:

- 1x M10-1.5 x 50 Hex Bolts
- 2x M10-1.5 x 35 Hex Bolts
- 2x M10-1.5 x 25 Hex Bolts
- 4x 3/8" Flat Washer
- 1x M10 Fender Washer

- Use the M10-1.5 x 35 Hex Bolts to attach the top of the Coyote-Godzilla Bell Plate to the Godzilla Engine Block. Use the M10-1.5 x 50 Hex Bolt in combination with the M10 Fender Washer and the Godzilla Bell Spacer to fasten the Bell Plate to the Godzilla Engine Block alignment pin. Then use the M10-1.5 x 25 Hex Bolts to fasten the two bottom left holes of the Bell Plate.



# Assembly Instructions:

## Step 6: Attaching the Starter Adapter to the Coyote/Godzilla Bell Plate

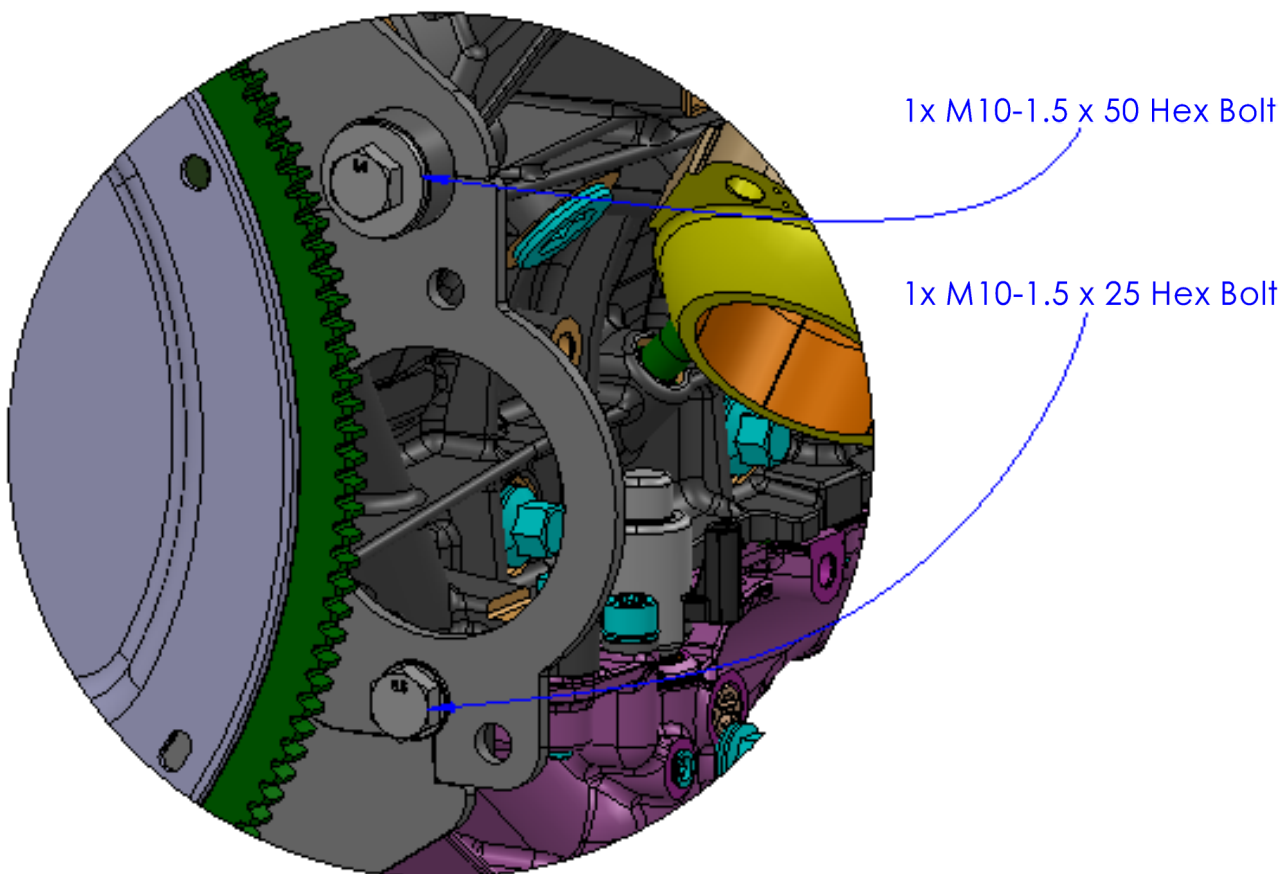
### Required Components:

- 1x Coyote-Godzilla Starter Adapter
- 1x 10R80 Starter Adapter
- 1x Godzilla Bell Spacer

### Required Hardware:

- 1x M10-1.5 x 50 Hex Bolts
- 1x M10-1.5 x 25 Hex Bolts
- 1x 3/8" Flat Washer
- 1x M10 Fender Washer

- **Note: There are two different starter adapters included in the kit. Determine which of the two starter adapters you need to use based on the starter that came with your engine.**
- Place the desired Starter Adapter in the opening on the Coyote-Godzilla Bell Adapter. Use the M10-1.5 x 50 Hex Bolt in combination with the M10 Fender Washer and the Godzilla Bell Spacer to clamp the Starter Adapter to the Godzilla Engine Block. Then use the M10-1.5 x 25 Hex Bolts to fasten the bottom hole of the Starter Adapter.



# Assembly Instructions:

## Step 7: Attaching the Godzilla Engine Assembly to the Running Engine Stand

### Required Components:

- 1x Godzilla Engine Assembly
- 2x SB-BB Motor Mount Spacer

### Required Hardware:

- 2x 7/16"-14 x 3.5" Hex Bolt
- 2x 7/16"-14 x 1" Hex Bolt
- 8x 7/16" Flat Washer
- 4x 7/16"-14 Nylock Nut

- Lower the Godzilla engine into place on the Running Engine Stand. Use the 7/16"-14 x 3.5" Hex Bolts in combination with the SB-BB Motor Mount Spacers to attach the SB-BB Motor Mounts to the Godzilla Motor Mount Brackets. Then, use the 7/16"-14 x 1" Hex Bolts to attach the Coyote-Godzilla Bell Plate to the 2WD Transmission Mount.

