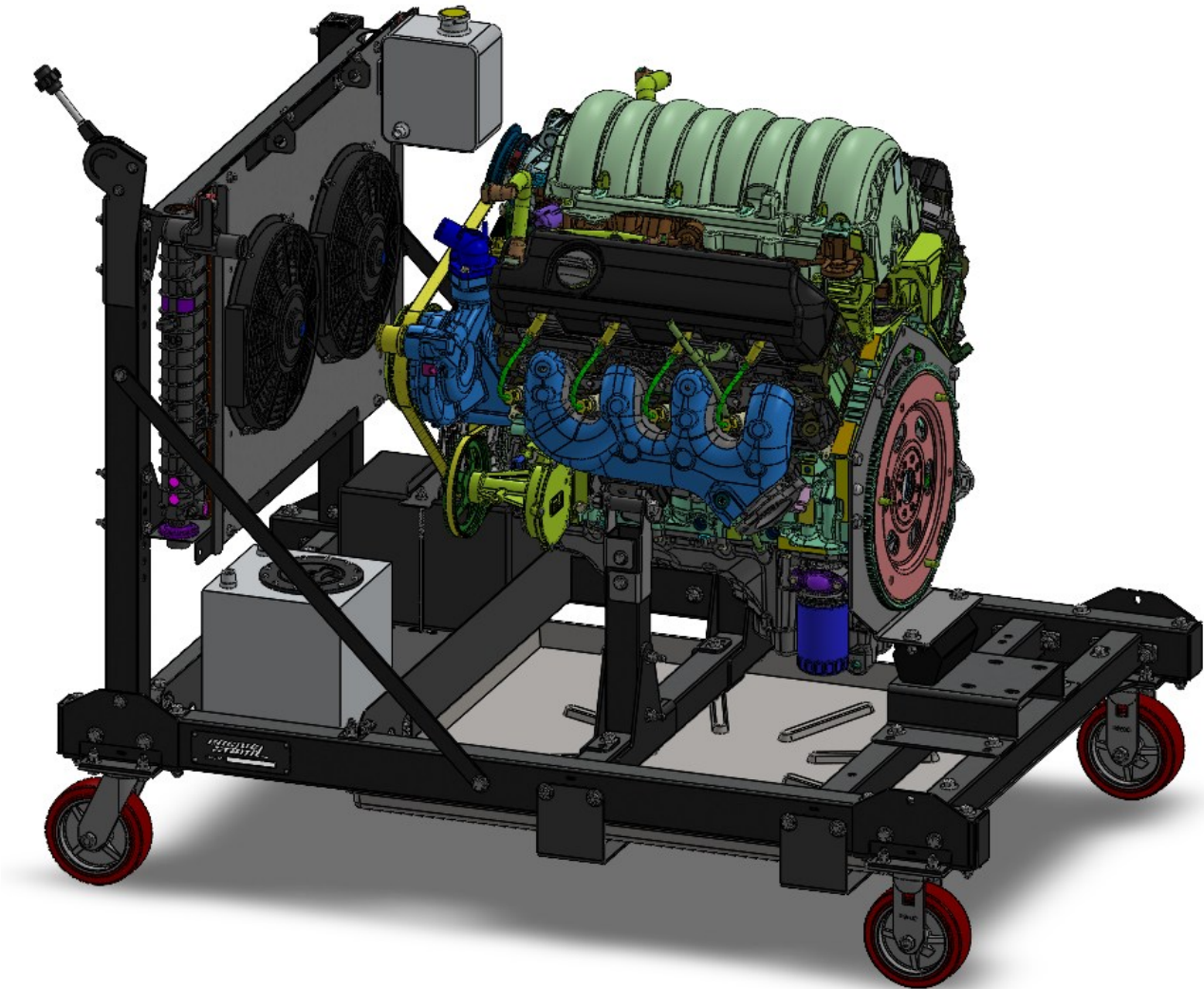


Running Engine Stand



LT Engine Assembly Instruction Manual

Important Notes for Assembly:

- This manual is for the LT motor mount kit for the Running Engine Stand assembly. If you have not yet started with the Main Assembly or ATW instructions, start there before returning here.
- Use care when handling parts. There may be sharp edges and holes on components. Using thick protective gloves is recommended during the assembly process.
- Each bolt and nut should have the appropriately sized washer placed between the fastener and the frame.

Required Tools:

- Ratchet
- 5/8" Wrench
- 5/8" Socket
- 9/16" Wrench
- 9/16" Socket
- 17mm Socket

If you are experiencing problems upon installation—
DO NOT RETURN THIS PRODUCT!

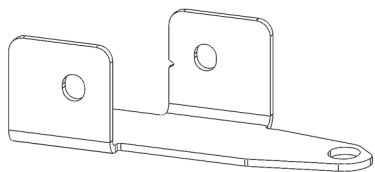
Most installation problems can be easily solved.

First contact technical support at:

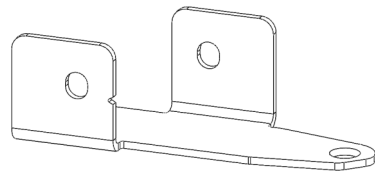
Service@mechman.com

1 (888) MECHMAN or 865-522-6166

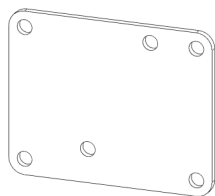
Included Components:



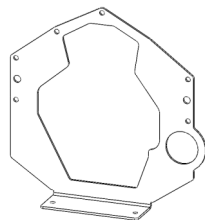
LT Motor Mount Part A 2x



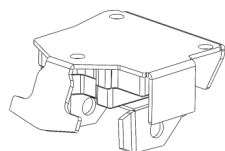
LT Motor Mount Part B 2x



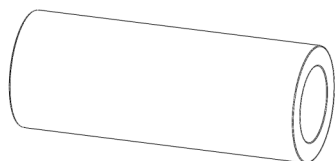
LT Block Adapter Plate 2x



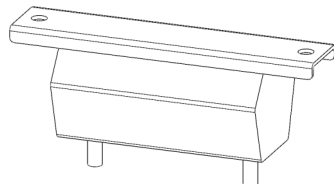
Bell Adapter Plate 1x



SB-BB Motor Mount 2x

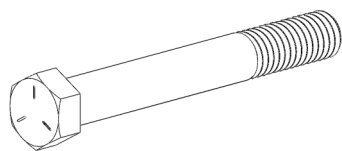


SB-BB Motor Mount Spacer 2x

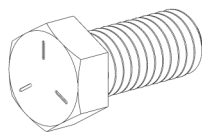


2WD Transmission Mount 1x

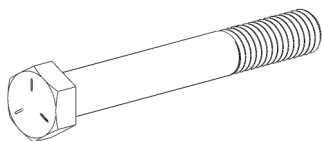
Included Hardware



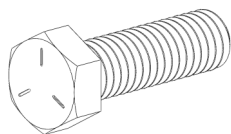
7/16"-14 x 3.5" Hex Bolt 2x



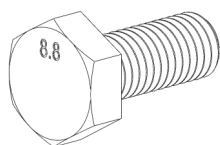
7/16"-14 x 1" Hex Bolt 2x



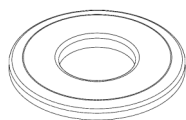
3/8"-16 x 3" Hex Bolt 4x



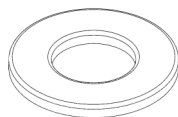
3/8"-16 x 1.25" Hex Bolt 4x



M10-1.5 x 25 Hex Bolt 13x



7/16" Flat Washer 8x



3/8" Flat Washer 29x



7/16"-14 Nylock Nut 4x



3/8"-16 Nylock Nut 8x

Assembly Instructions:

Step 1: Attaching the LT Motor Mount Brackets to the Front Engine Mount Tubes

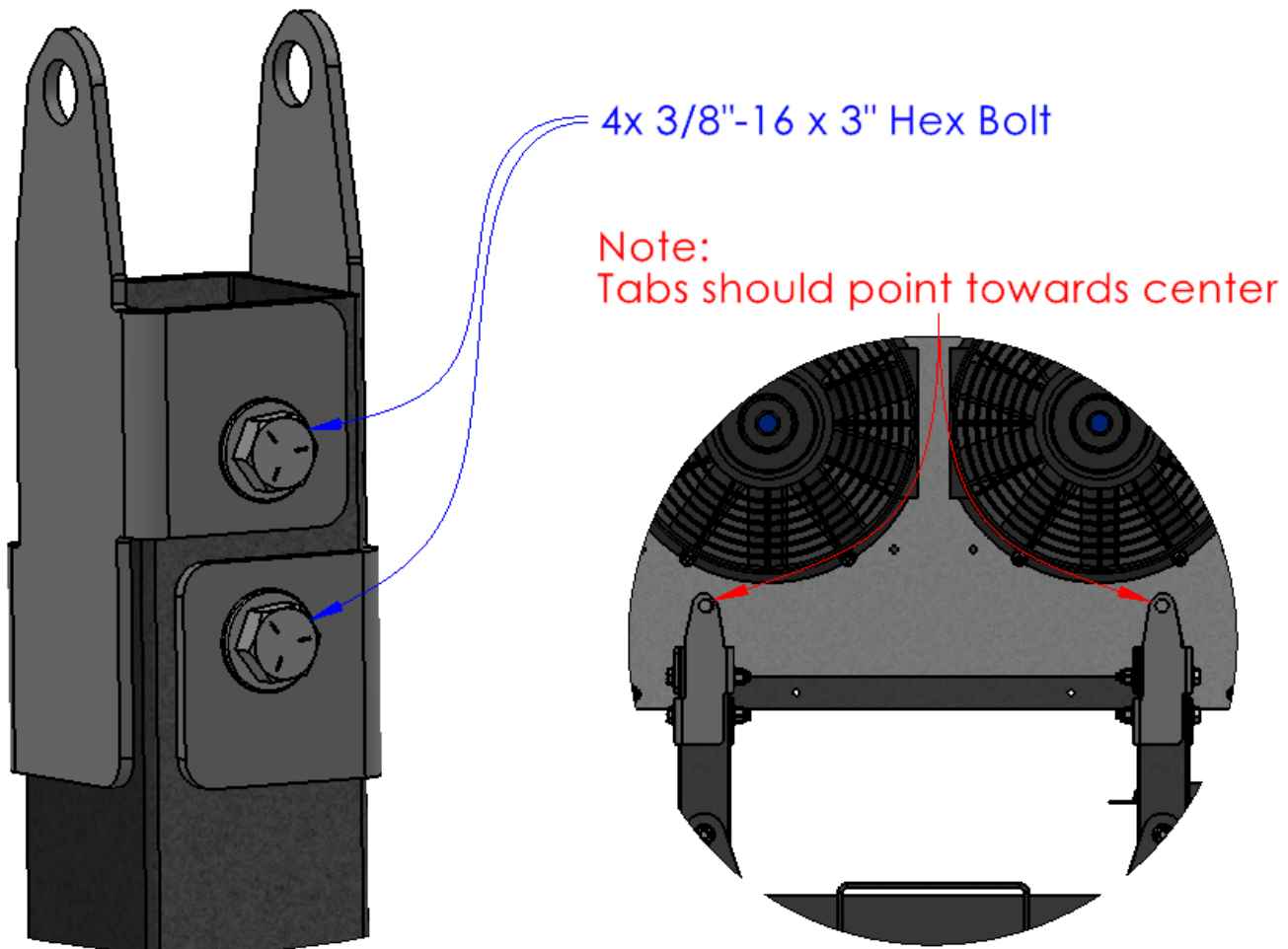
Required Components:

- 2x LT Motor Mount Part A
- 2x LT Motor Mount Part B

Required Hardware:

- 4x 3/8"-16 x 3" Hex Bolts
- 4x 3/8"-16 Nylock Nut
- 8x 3/8" Flat Washer

- Use the 3/8"-16 x 3" Hex Bolts to attach the LT Motor Mount Brackets to the Front Engine Mount Tubes.

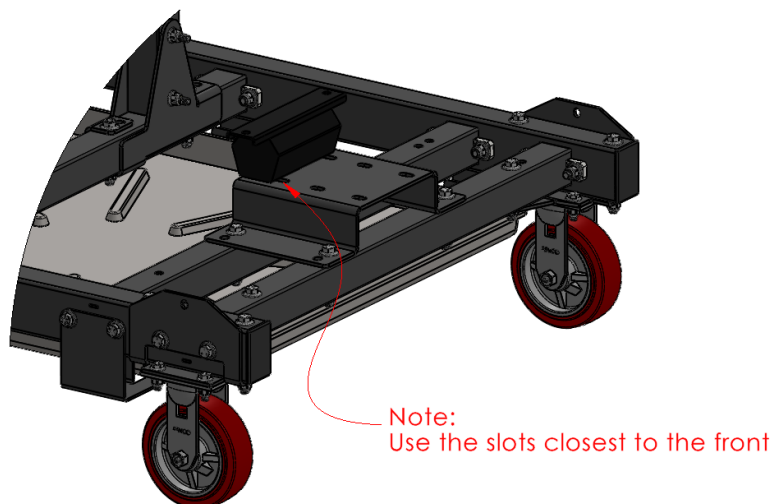
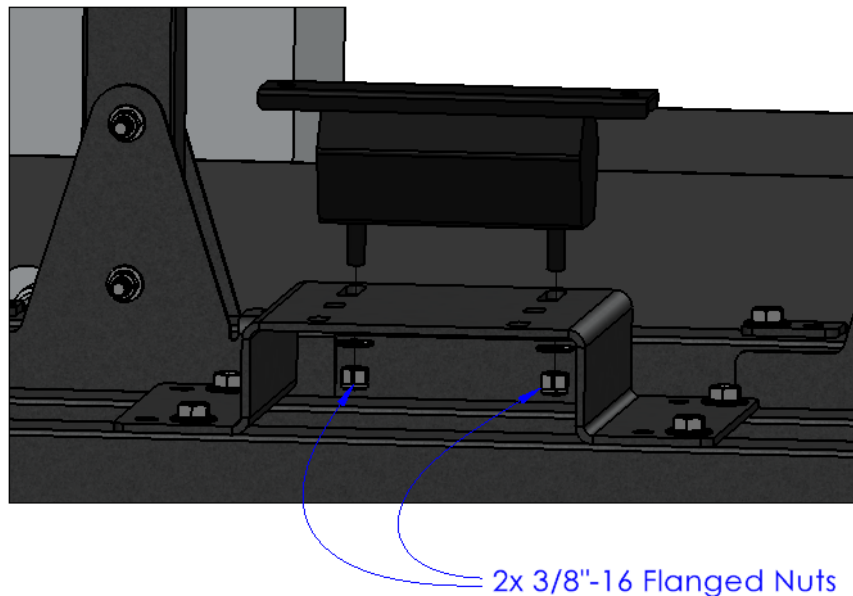


Assembly Instructions:

Step 2: Attaching the 2WD Transmission Mount to the Rear Engine Mount Bracket

Required Components: Required Hardware:

- 1x 2WD Transmission Mount
- 2x 3/8"-16 Flanged Nut (Included w/ Transmission Mount)
- Use the 3/8"-16 Flanged Nuts to attach the 2WD Transmission Mount to the Rear Engine Mount Bracket.
- Note: Place the 2WD Transmission Mount in the front set of slots.



Assembly Instructions:

Step 3: Attaching the SB-BB Motor Mounts to the LT Block Adapter Plates

Required Components:

- 2x SB-BB Motor Mount
- 2x LT Block Adapter Plate

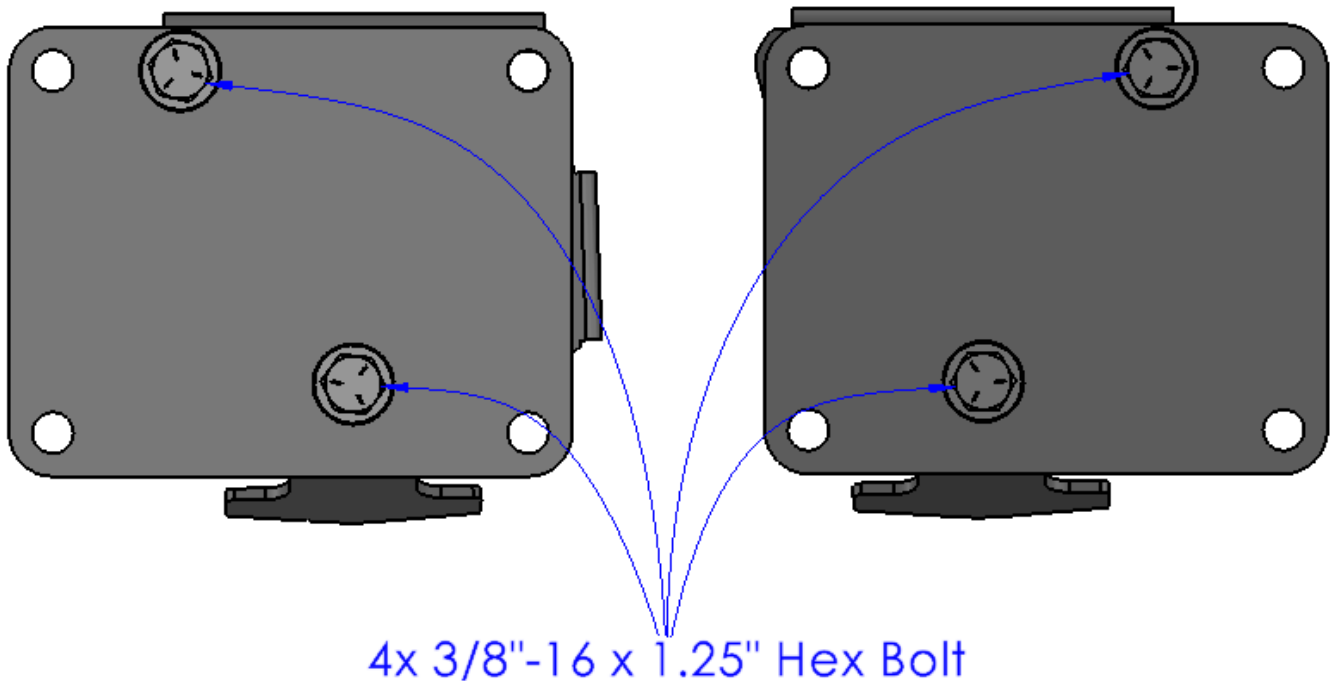
Required Hardware:

- 4x 3/8"-16 x 1.25" Hex Bolts
- 4x 3/8"-16 Nylock Nut
- 8x 3/8" Flat Washer

- Use the 3/8"-16 x 1.25" Hex Bolts to attach the SB-BB Motor Mounts to the LT Block Adapter Plates. Make sure the bolt heads are on the Adapter Plate side to avoid interference with the engine.
- The LT Block Adapter Plate is universal to both sides of the engine. One Adapter Plate should be made for the driver side, and one should be made for the passenger side (see below).

Driver:

Passenger:



Assembly Instructions:

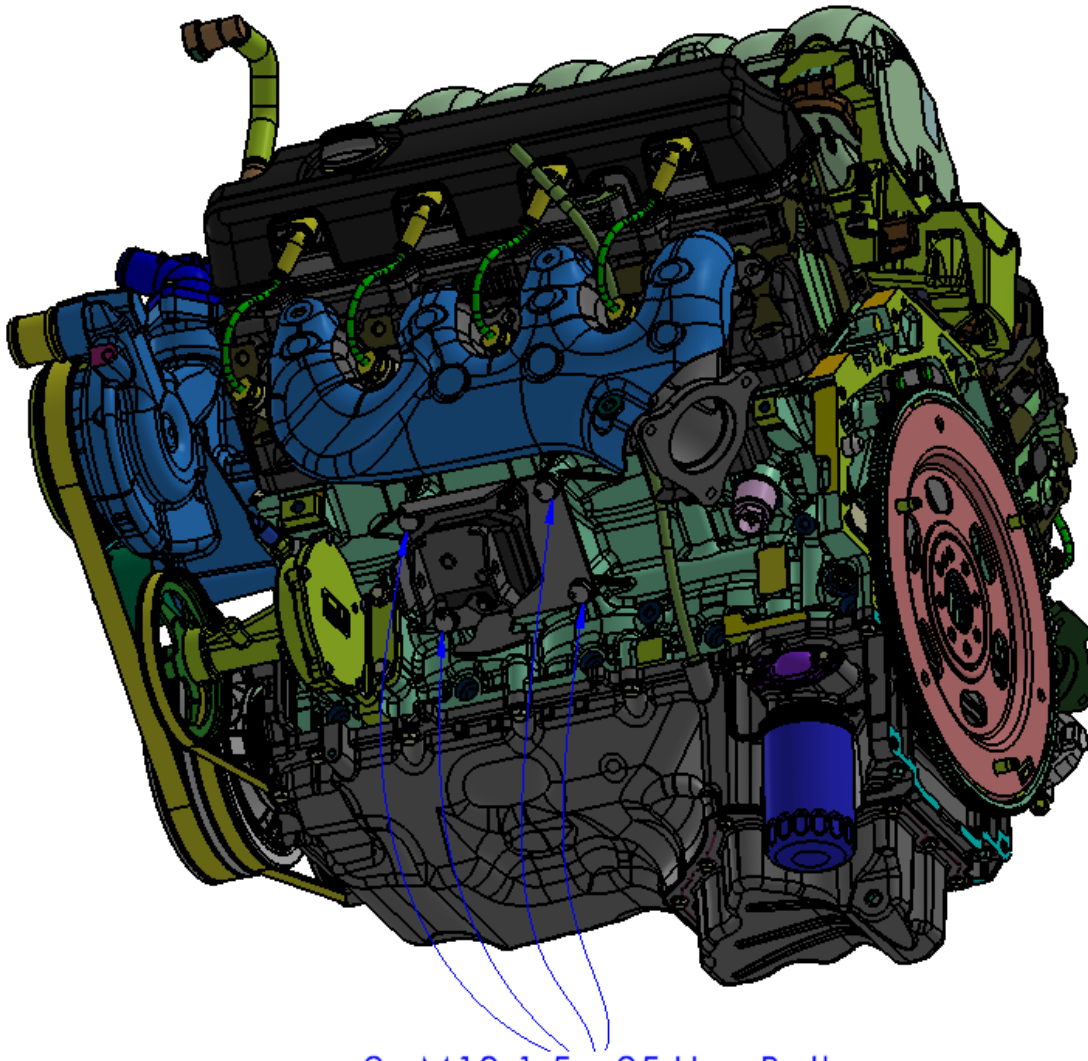
Step 4: Attaching the LT Block Adapter Subassemblies to the LT Engine

Required Components:

- 1x LT Engine
(Not Included)
 - 1x LT Block Adapter Subassembly—Driver
 - 1x LT Block Adapter Subassembly—Passenger
- Use the M10-1.5 x 25 Hex Bolts to attach the LT Block Adapter Subassemblies to the LT Engine Block.

Required Hardware:

- 8x M10-1.5 x 25 Hex Bolts
- 8x 3/8" Flat Washer



8x M10-1.5 x 25 Hex Bolt

Assembly Instructions:

Step 5: Attaching the Bell Adapter Plate to the LT Engine Assembly

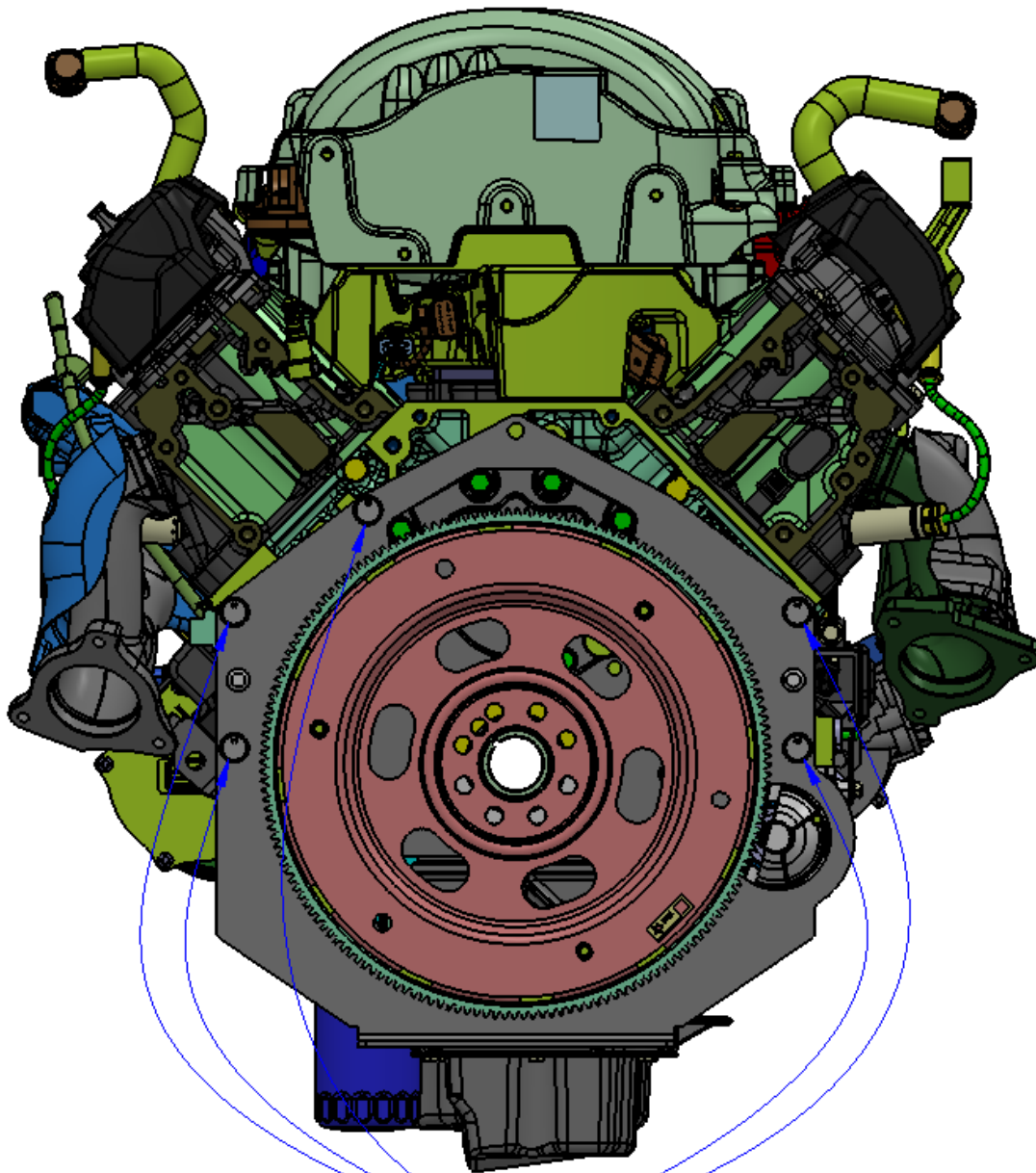
Required Components:

- 1x Bell Adapter Plate

Required Hardware:

- 5x M10-1.5 x 25 Hex Bolts
- 5x 3/8" Flat Washer

- Use the M10-1.5 x 25 Hex Bolts to attach the Bell Adapter Plate to the LT Engine Block.



5x M10-1.5 x 25 Hex Bolt

Assembly Instructions:

Step 6: Attaching the LT Engine Assembly to the Running Engine Stand

Required Components:

- 1x LT Engine Assembly
- 2x SB-BB Motor Mount Spacer

Required Hardware:

- 2x 7/16"-14 x 3.5" Hex Bolt
- 2x 7/16"-14 x 1" Hex Bolt
- 8x 7/16" Flat Washer
- 4x 7/16"-14 Nylock Nut

- Lower the LT engine into place on the Running Engine Stand. Use the 7/16"-14 x 3.5" Hex Bolts in combination with the SB-BB Motor Mount Spacers to attach the SB-BB Motor Mounts to the LT Motor Mount Brackets. Then, use the 7/16"-14 x 1" Hex Bolts to attach the Bell Adapter Plate to the 2WD Transmission Mount.

