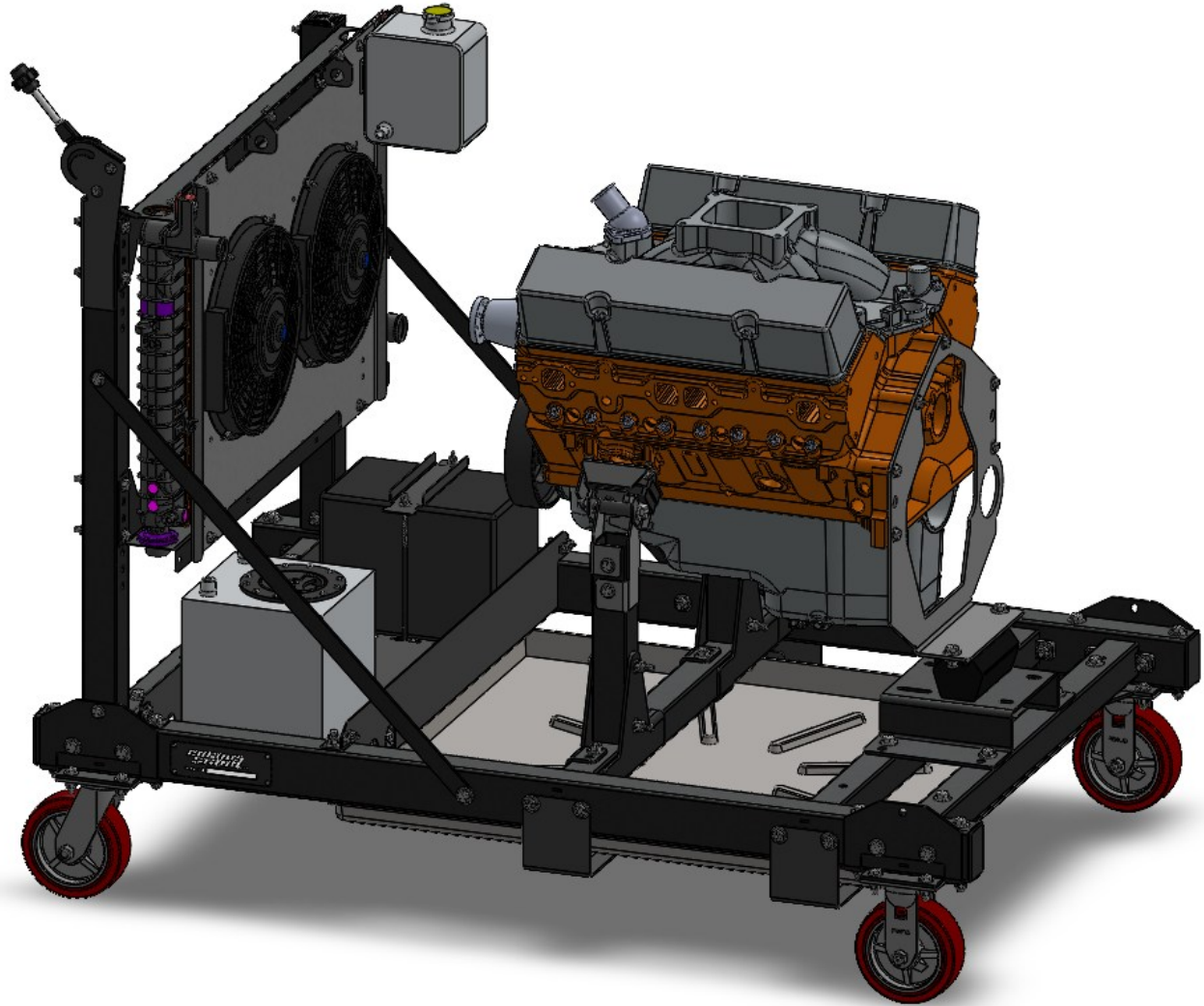


# Running Engine Stand



# SBC/BBC Engine Assembly Instruction Manual

## Important Notes for Assembly:

- This manual is for the SBC/BBC motor mount kit for the Running Engine Stand assembly. If you have not yet started with the Main Assembly or ATW instructions, start there before returning here.
- Use care when handling parts. There may be sharp edges and holes on components. Using thick protective gloves is recommended during the assembly process.
- Each bolt and nut should have the appropriately sized washer placed between the fastener and the frame.

### Required Tools:

- Ratchet
- 9/16" Wrench
- 3/4" Wrench
- 9/16" Socket
- 3/4" Socket
- 5/8" Wrench
- 5/8" Socket

If you are experiencing problems upon installation—  
DO NOT RETURN THIS PRODUCT!

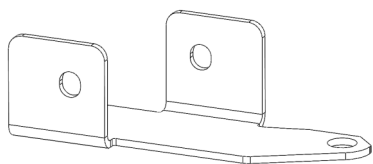
**Most installation problems can be easily solved.**

First contact technical support at:

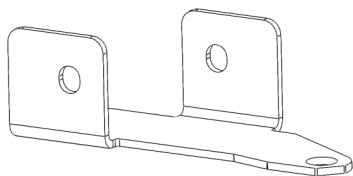
**Service@mechman.com**

**1 (888) MECHMAN or 865-522-6166**

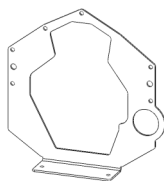
# Included Components:



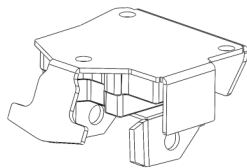
SB-BB Motor Mount Part A 2x



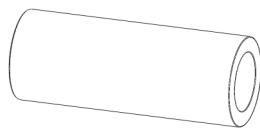
SB-BB Motor Mount Part B 2x



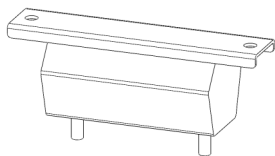
Bell Adapter Plate 1x



SB-BB Motor Mount 2x

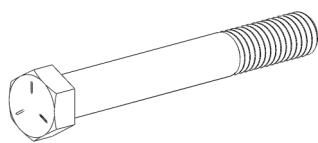


SB-BB Motor Mount Spacer 2x

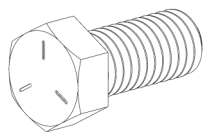


2WD Transmission Mount 1x

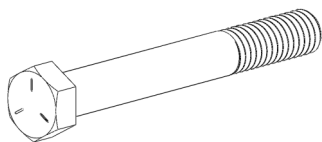
# Included Hardware



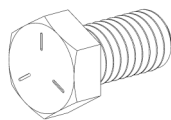
7/16"-14 x 3.5" Hex Bolt 2x



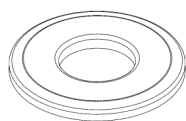
7/16"-14 x 1" Hex Bolt 2x



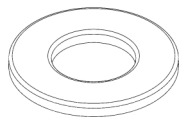
3/8"-16 x 3" Hex Bolt 4x



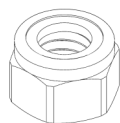
3/8"-16 x 0.75" Hex Bolt 12x



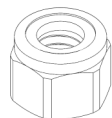
7/16" Flat Washer 8x



3/8" Flat Washer 20x



7/16"-14 Nylock Nut 4x



3/8"-16 Nylock Nut 4x

# Assembly Instructions:

## Step 1: Attaching the Motor Mount Brackets to the Front Engine Mount Tubes

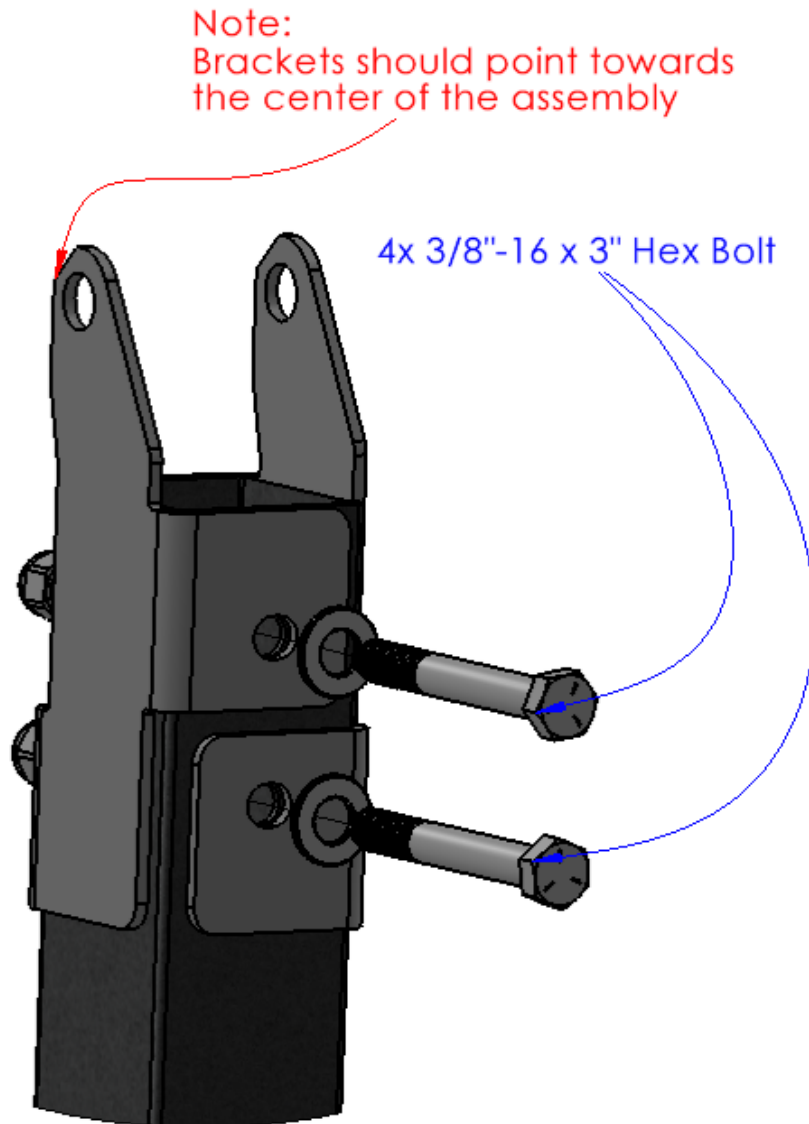
### Required Components:

- 2x SB-BB Motor Mount Part A
- 2x SB-BB Motor Mount Part B

### Required Hardware:

- 4x 3/8"-16 x 3" Hex Bolts
- 4x 3/8"-16 Nylock Nut
- 8x 3/8" Flat Washer

- Use the 3/8"-16 x 3" Hex Bolts to attach the SB-BB Motor Mount Brackets to the Front Engine Mount Tubes.



# Assembly Instructions:

## Step 2: Attaching the SBC/BBC Motor Mounts to the Motor Mount Brackets

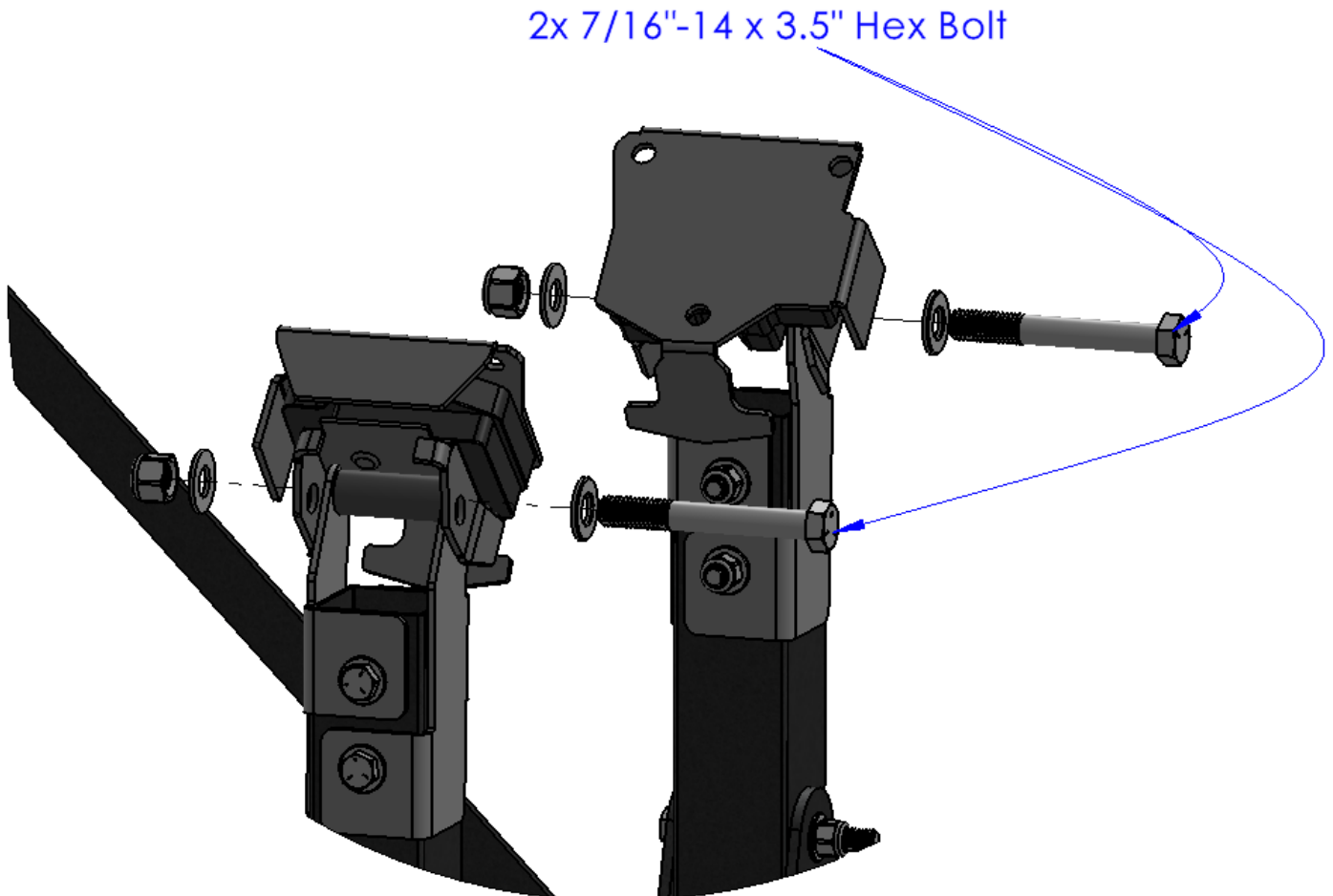
### Required Components:

- 2x SB-BB Motor Mount
- 2x SB-BB Motor Mount Spacer

### Required Hardware:

- 2x 7/16"-14 x 3.5" Hex Bolts
- 4x 7/16" Flat Washer
- 2x 7/16"-14 Nylock Nut

- Place the SB-BB Motor Mount Spacer between the two SB-BB Motor Mount Brackets.
- Use the 7/16"-14 x 3.5" Hex Bolts to attach the SB-BB Motor Mount to the SB-BB Motor Mount Brackets.

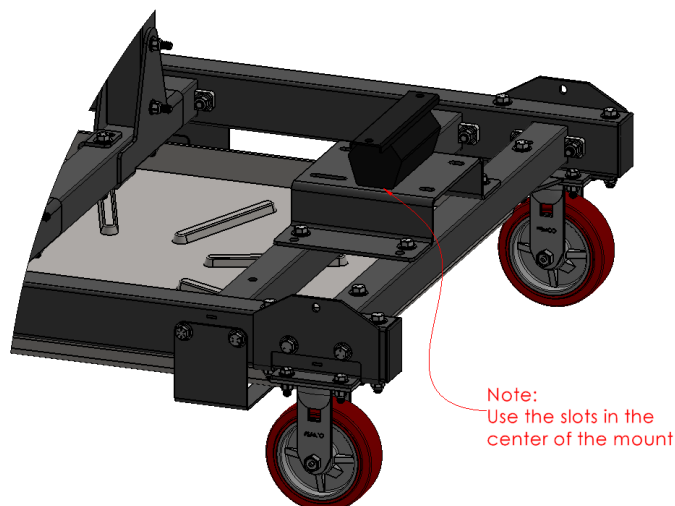
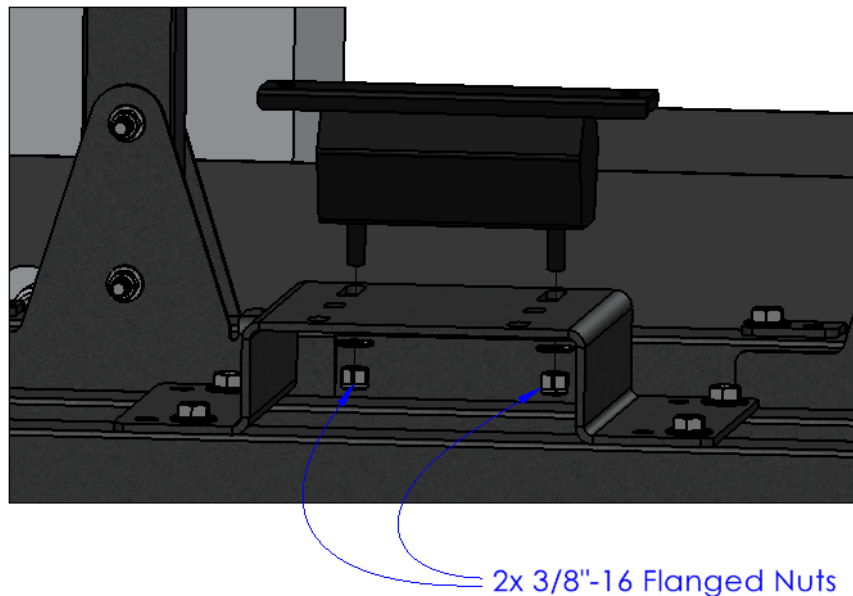


# Assembly Instructions:

## Step 3: Attaching the 2WD Transmission Mount to the Rear Engine Mount Bracket

Required Components:      Required Hardware:

- 1x 2WD Transmission Mount
- 2x 3/8"-16 Flanged Nut (Included w/ Transmission Mount)
- Use the 3/8"-16 Flanged Nuts to attach the 2WD Transmission Mount to the Rear Engine Mount Bracket.
- Note: Place the 2WD Transmission Mount in the middle set of slots.



# Assembly Instructions:

## Step 4: Attaching the Bell Adapter Plate to the 2WD Transmission Mount

### Required Components:

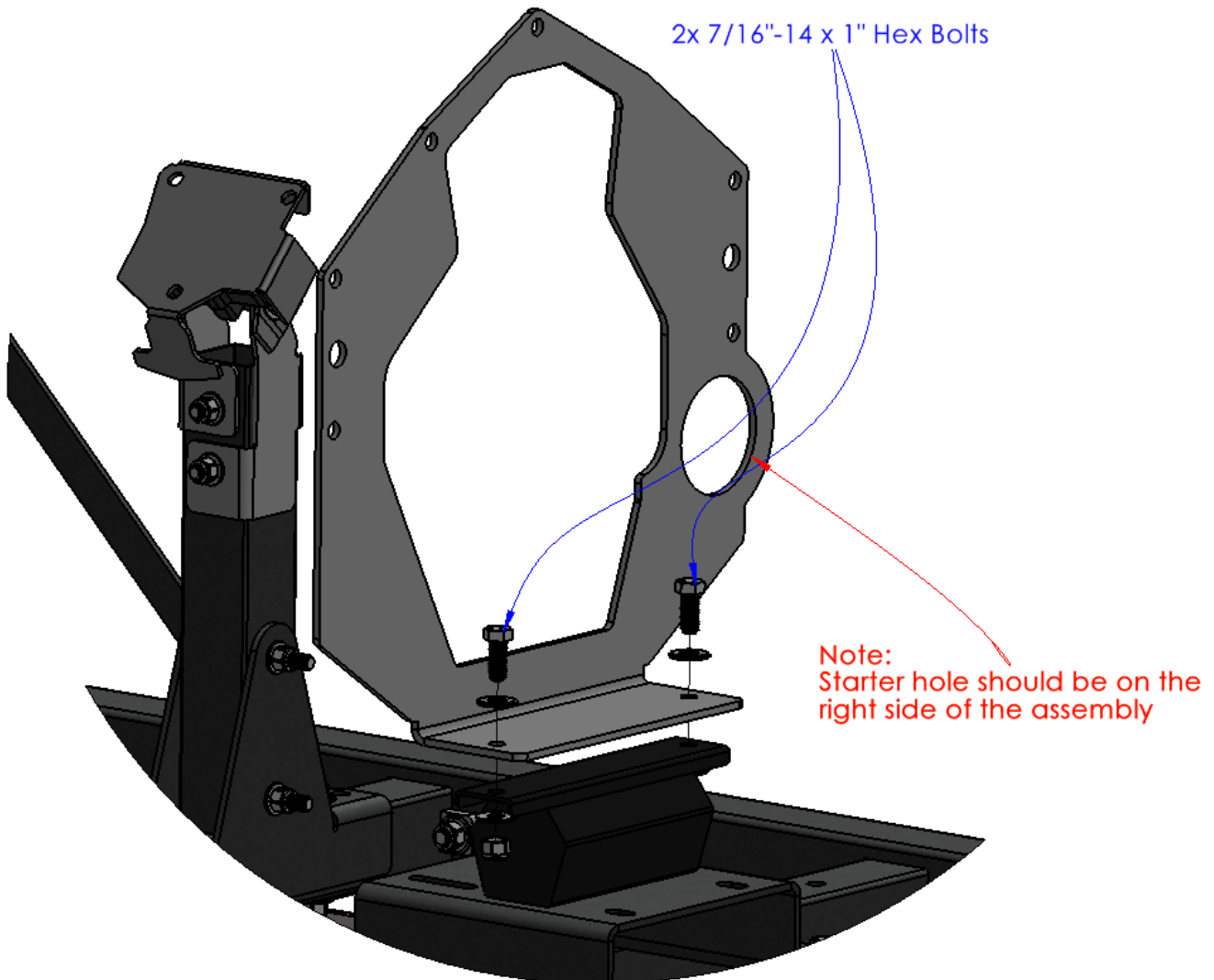
- 1x Bell Adapter Plate

### Required Hardware:

- 2x 7/16"-14 x 1" Hex Bolts
- 4x 7/16" Flat Washer

- 2x 7/16"-14 Nylock Nut

- Use the 7/16"-14 x 1" Hex Bolts fasteners to attach the Bell Adapter Plate to the 2WD Transmission Mount.





# Assembly Instructions:

## Step 5: Attaching the SBC/BBC Engine to the Assembly

### Required Components:

- 1x SBC/BBC Engine  
(Not Included)

### Required Hardware:

- 12x 3/8"-16 x 0.75" Hex Bolts
- 12x 3/8" Flat Washer

- Use the 3/8"-16 x 0.75" Hex Bolts to attach the SB-BB Motor Mounts to the SBC/BBC Engine, then use the 3/8"-16 x 0.75" Hex Bolts to attach the Bell Adapter Plate to the SBC/BBC Engine.
- Note:** Attaching rubber mounts and bell adapter plate to engine before install can ease the installation.

