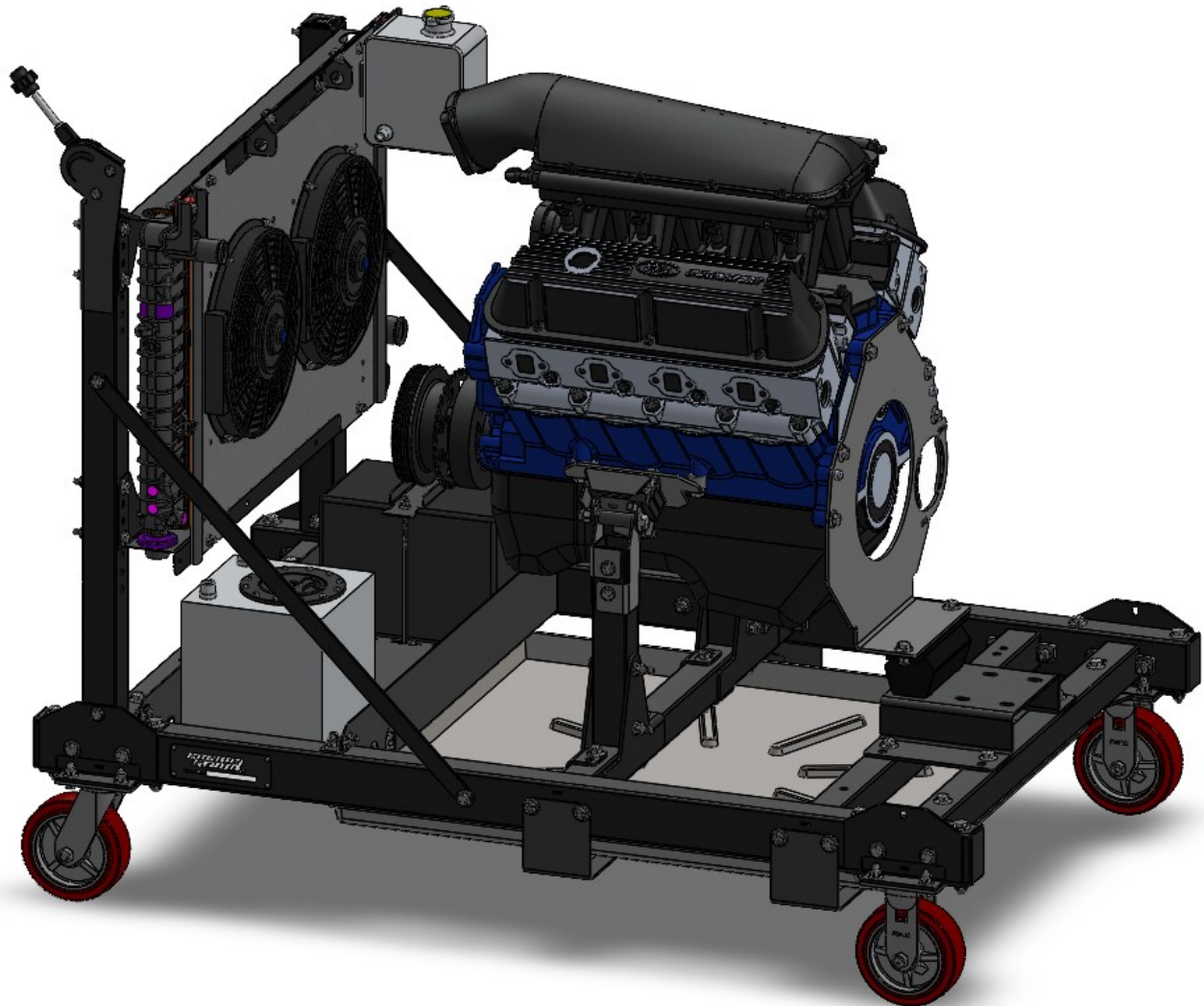


Running Engine Stand



SBF Engine Assembly Instruction Manual

Important Notes for Assembly:

- This manual is for the SBF motor mount kit for the Running Engine Stand assembly. If you have not yet started with the Main Assembly or ATW instructions, start there before returning here.
- Use care when handling parts. There may be sharp edges and holes on components. Using thick protective gloves is recommended during the assembly process.
- Each bolt and nut should have the appropriately sized washer placed between the fastener and the frame.

Required Tools:

- Ratchet
- 5/8" Wrench
- 5/8" Socket
- 9/16" Wrench
- 9/16" Socket
- Hacksaw

If you are experiencing problems upon installation—
DO NOT RETURN THIS PRODUCT!

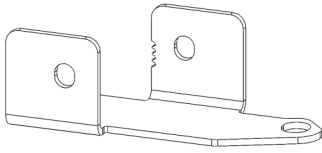
Most installation problems can be easily solved.

First contact technical support at:

Service@mechman.com

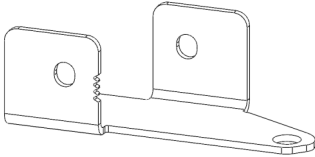
1 (888) MECHMAN or 865-522-6166

Included Components:



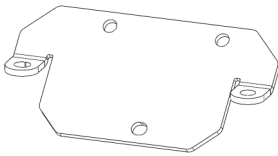
SBF Motor Mount Part A

2x



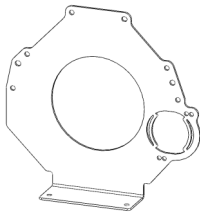
SBF Motor Mount Part B

2x



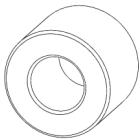
SBF Block Adapter Plate

2x



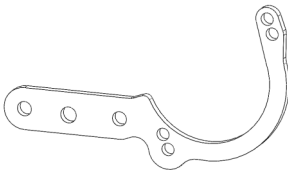
SBF Bell Adapter Plate

1x



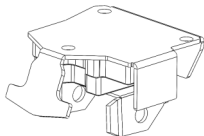
SBF Motor Mount Spacer

4x



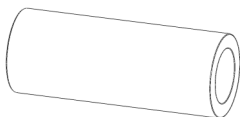
SBF Starter Reinforcement

1x



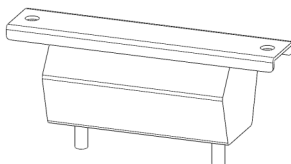
SB-BB Motor Mount

2x



SB-BB Motor Mount Spacer

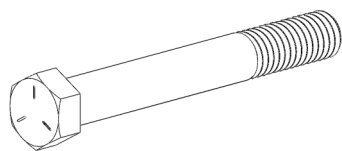
2x



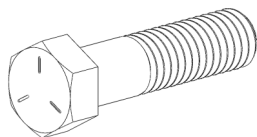
2WD Transmission Mount

1x

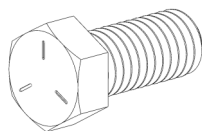
Included Hardware



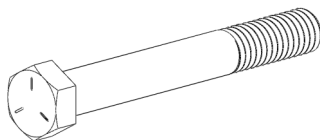
7/16"-14 x 3.5" Hex Bolt 2x



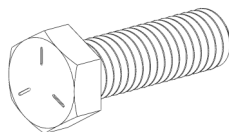
7/16"-14 x 1.75" Hex Bolt 4x



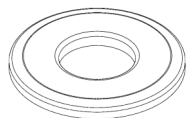
7/16"-14 x 1" Hex Bolt 8x



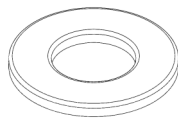
3/8"-16 x 3" Hex Bolt 4x



3/8"-16 x 1.25" Hex Bolt 6x



7/16" Flat Washer 18x



3/8" Flat Washer 20x



7/16"-14 Nylock Nut 4x



3/8"-16 Nylock Nut 10x

Assembly Instructions:

Step 1: Attaching the SBF Motor Mount Brackets to the Front Engine Mount Tubes

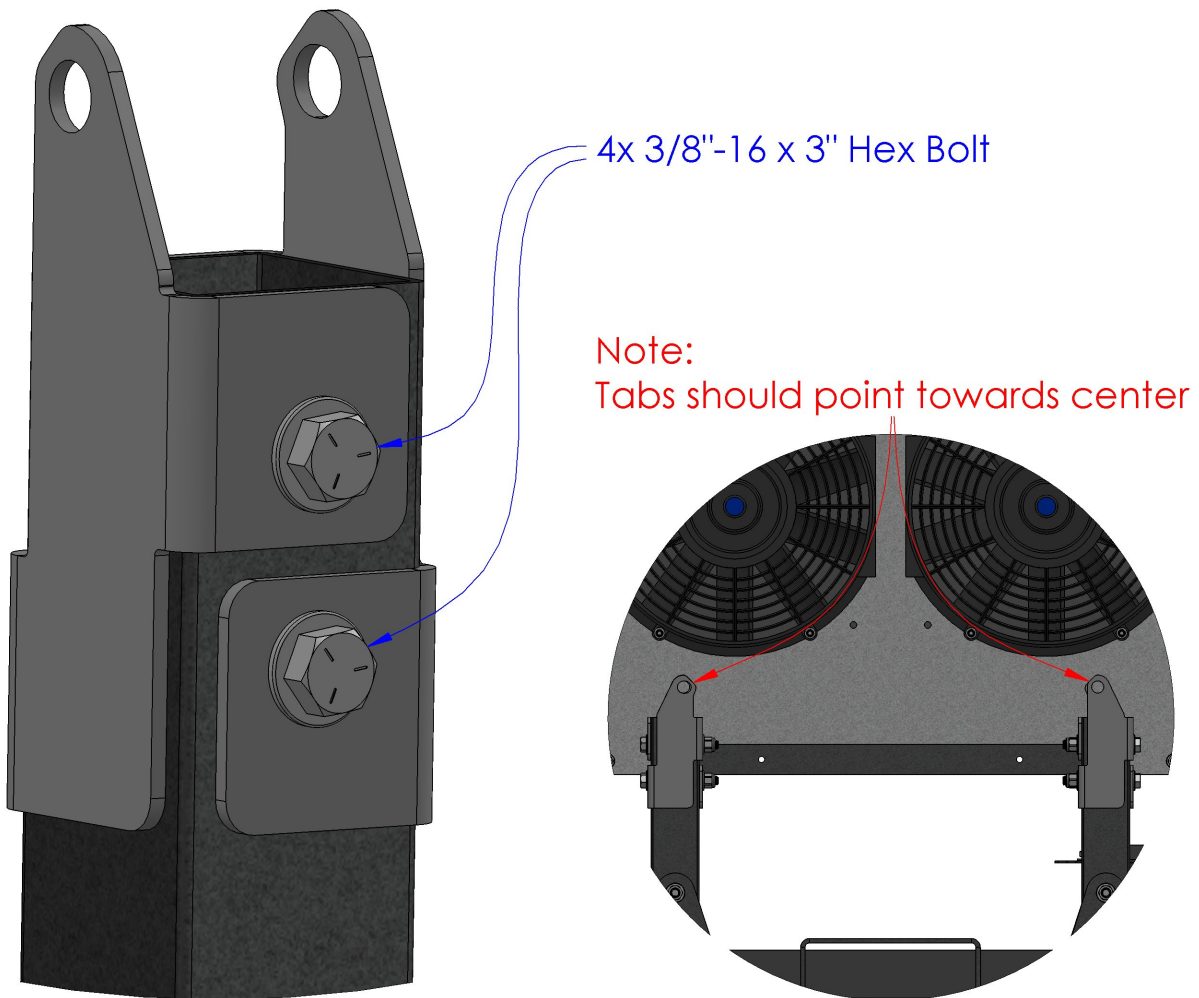
Required Components:

- 2x SBF Motor Mount Part A
- 2x SBF Motor Mount Part B

Required Hardware:

- 4x 3/8"-16 x 3" Hex Bolts
- 4x 3/8"-16 Nylock Nut
- 8x 3/8" Flat Washer

- Use the 3/8"-16 x 3" Hex Bolts to attach the SBF Motor Mount Brackets to the Front Engine Mount Tubes.

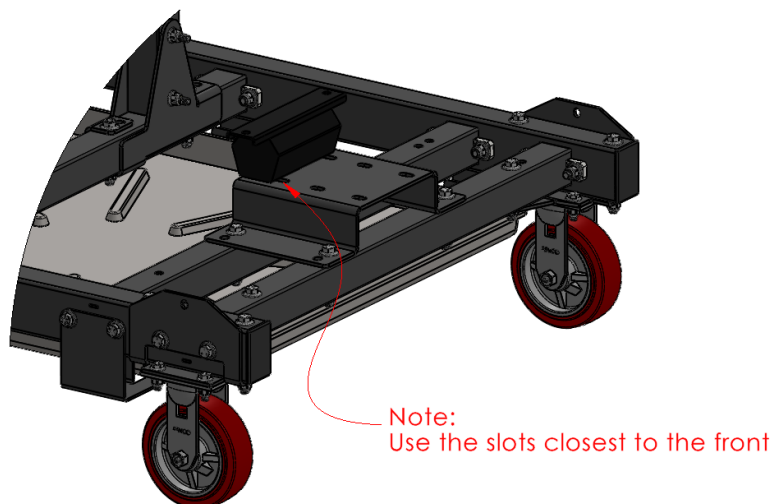
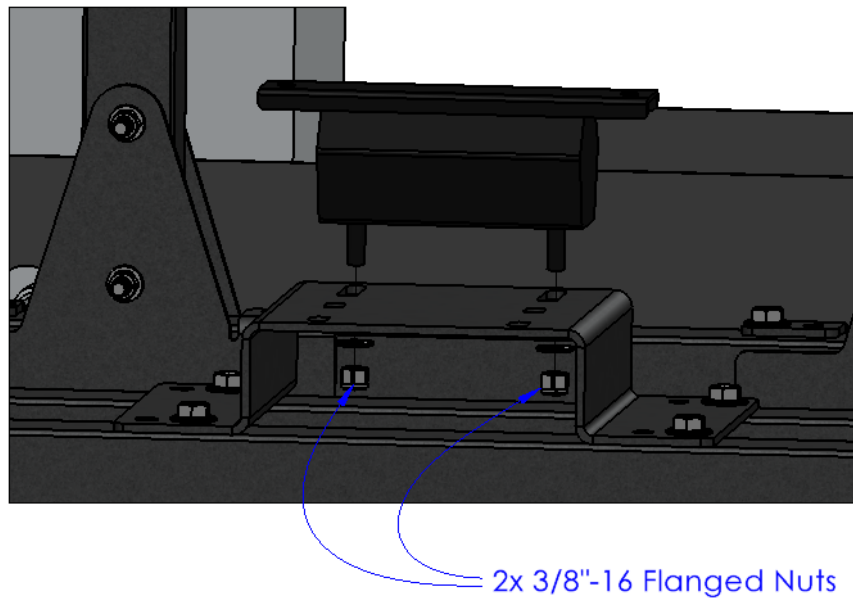


Assembly Instructions:

Step 2: Attaching the 2WD Transmission Mount to the Rear Engine Mount Bracket

Required Components: Required Hardware:

- 1x 2WD Transmission Mount
- 2x 3/8"-16 Flanged Nut (Included w/ Transmission Mount)
- Use the 3/8"-16 Flanged Nuts to attach the 2WD Transmission Mount to the Rear Engine Mount Bracket.
- Note: Place the 2WD Transmission Mount in the front set of slots.



Assembly Instructions:

Step 3: Attaching the SB-BB Motor Mounts to the SBF Block Adapter Plates

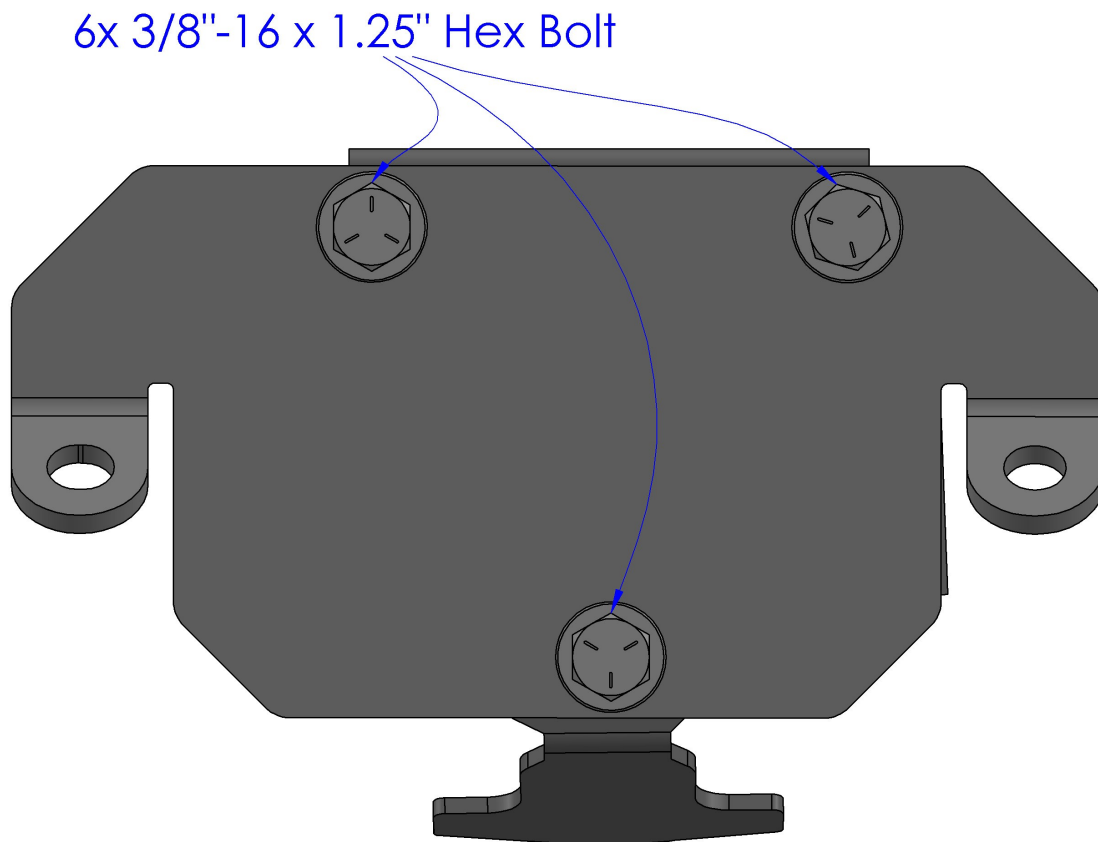
Required Components:

- 2x SB-BB Motor Mount
- 2x SBF Block Adapter Plate

Required Hardware:

- 6x 3/8"-16 x 1.25" Hex Bolts
- 6x 3/8"-16 Nylock Nut
- 12x 3/8" Flat Washer

- Use the 3/8"-16 x 1.25" Hex Bolts to attach the SB-BB Motor Mounts to the SBF Block Adapter Plates. Make sure the bolt heads are on the Adapter Plate side to avoid interference with the engine. Create two of these subassemblies in total.



Assembly Instructions:

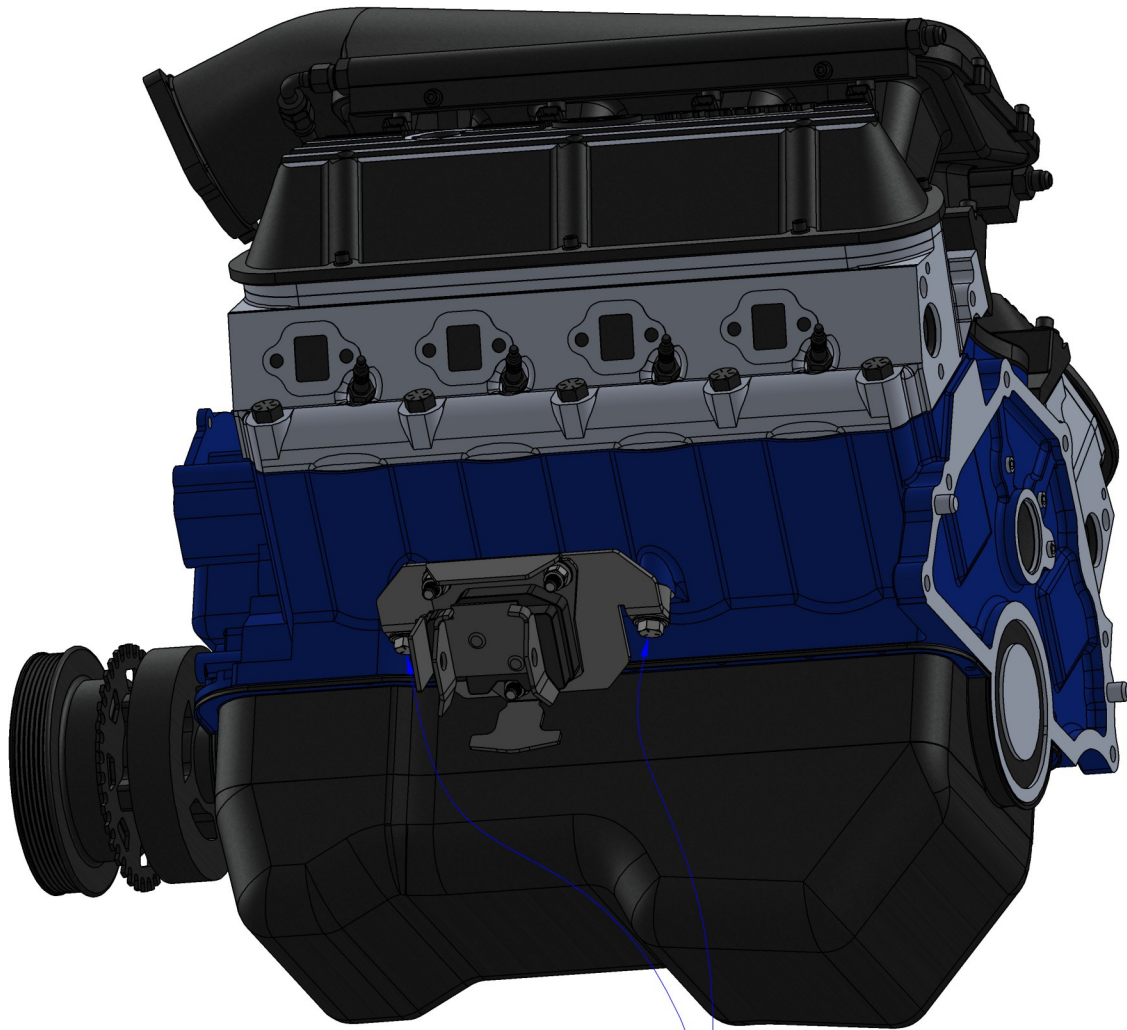
Step 4: Attaching the SBF Block Adapter Subassemblies to the SBF Engine

Required Components:

- 1x SBF Engine
(Not Included)
 - 2x SBF Block Adapter Subassembly
 - 4x SBF Motor Mount Spacer
- Use the 7/16"-14 x 1.75" Hex Bolts to attach the SBF Block Adapter Subassemblies to the SBF Engine Block.

Required Hardware:

- 4x 7/16"-14 x 1.75" Hex Bolts
- 4x 7/16" Flat Washer



4x 7/16"-14 x 1.75" Hex Bolt

Assembly Instructions:

Step 5: Attaching the SBF Bell Adapter Plate to the SBF Engine Assembly

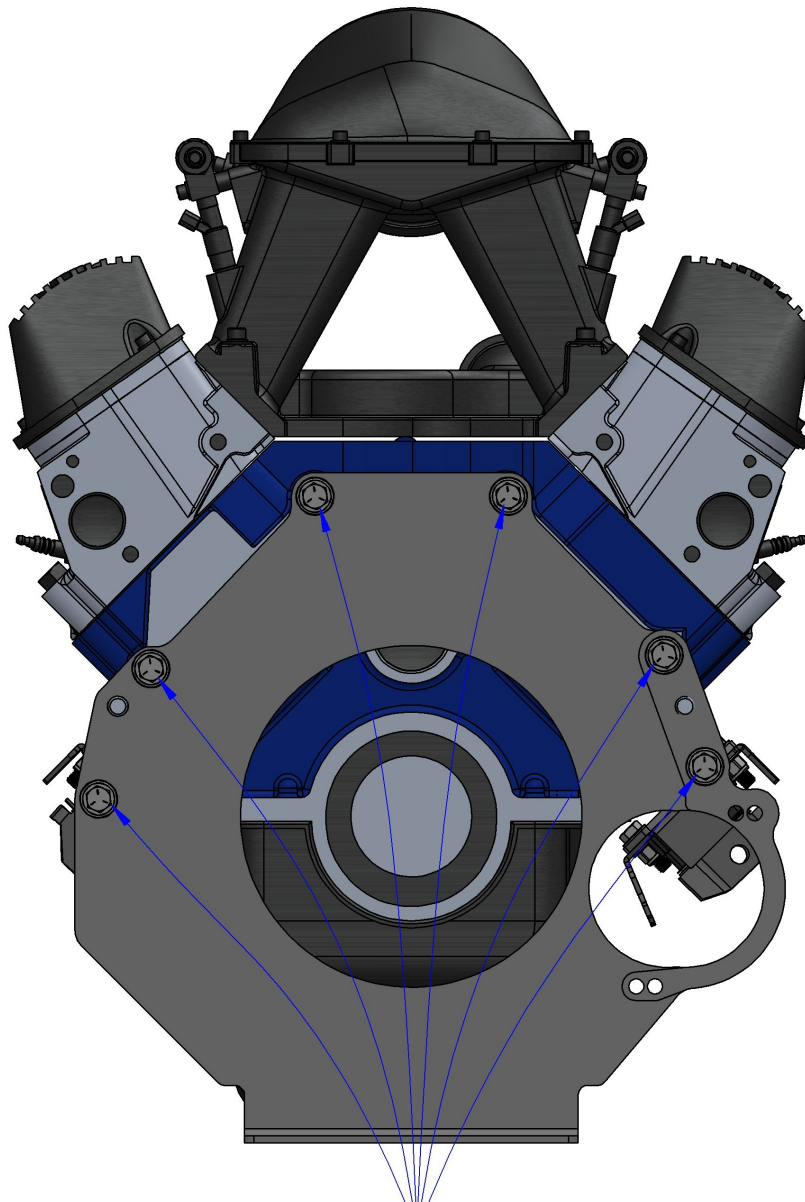
Required Components:

- 1x SBF Bell Adapter Plate
- 1x SBF Starter Reinforcement

Required Hardware:

- 6x 7/16"-14 x 1" Hex Bolts
- 6x 7/16" Flat Washer

- Use the 7/16"-14 x 1" Hex Bolts to attach the SBF Bell Adapter Plate and the SBF Starter Reinforcement to the SBF Engine.



6x 7/16"-14 x 1" Hex Bolt

Assembly Instructions:

Step 6: Attaching the SBF Engine Assembly to the Running Engine Stand

Required Components:

- 1x SBF Engine Assembly
- 2x SB-BB Motor Mount Spacer

Required Hardware:

- 2x 7/16"-14 x 3.5" Hex Bolts
- 2x 7/16"-14 x 1" Hex Bolts
- 8x 7/16" Flat Washer
- 4x 7/16"-14 Nylock Nut

- Lower the SBF engine into place on the Running Engine Stand. Use the 7/16"-14 x 3.5" Hex Bolts in combination with the SB-BB Motor Mount Spacers to attach the SB-BB Motor Mounts to the SBF Motor Mount Brackets. Then, use the 7/16"-14 x 1" Hex Bolts to attach the SBF Bell Adapter Plate to the 2WD Transmission Mount.

